

Regional Transportation Safety Planning (TSP) Process Development Project

MORPC Commission (4.13.17)



Mid-Ohio Regional
Planning Commission

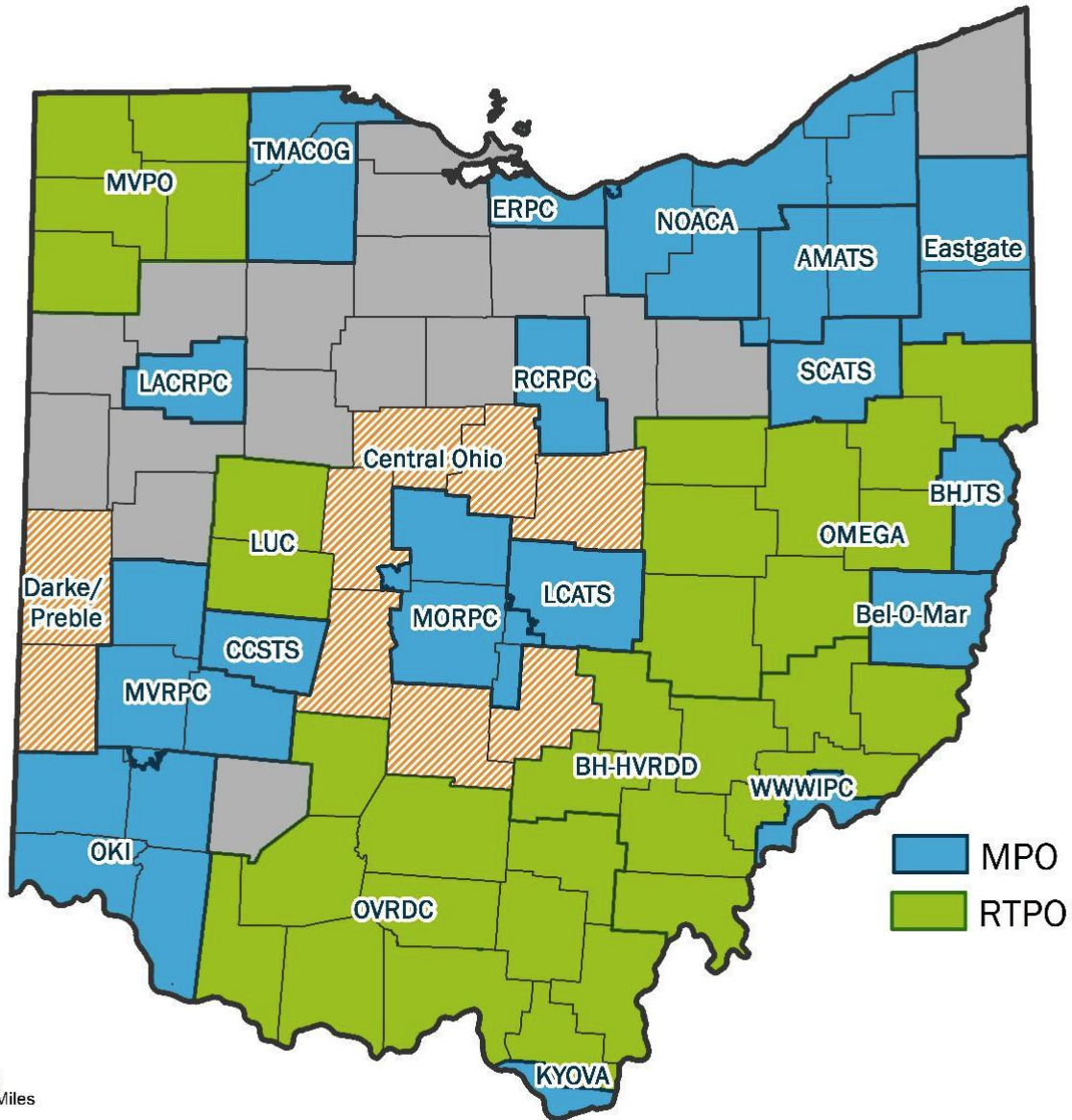
TRANSPORTATION SAFETY PERFORMANCE MEASURES

PERFORMANCE MEASURE	2015 BENCHMARK	2020		2040		2016 GRADE
		TARGET	TRACK	TARGET	TRACK	
Number of fatalities	96	-10%	0.09%	-39%	-14.6%	
Number of serious injuries	890	-10%	-8.3%	-39%	-35.6%	
Number of non-motorized fatal & serious injuries	138	-10%	12.5%	-39%	84.3%	
Rate of fatalities per 100 million VMT	0.69	0.63	0.69	0.42	0.60	
Rate of serious injuries per 100 million VMT	6.40	5.83	5.86	3.91	4.17	

Notes

- The benchmark and targets represent five year rolling averages
- Million Vehicle Miles Traveled (MVMT)
- “TARGET” = Performance target included in the 2016-2040 MTP
- “TRACK” = Progress should current trends continue



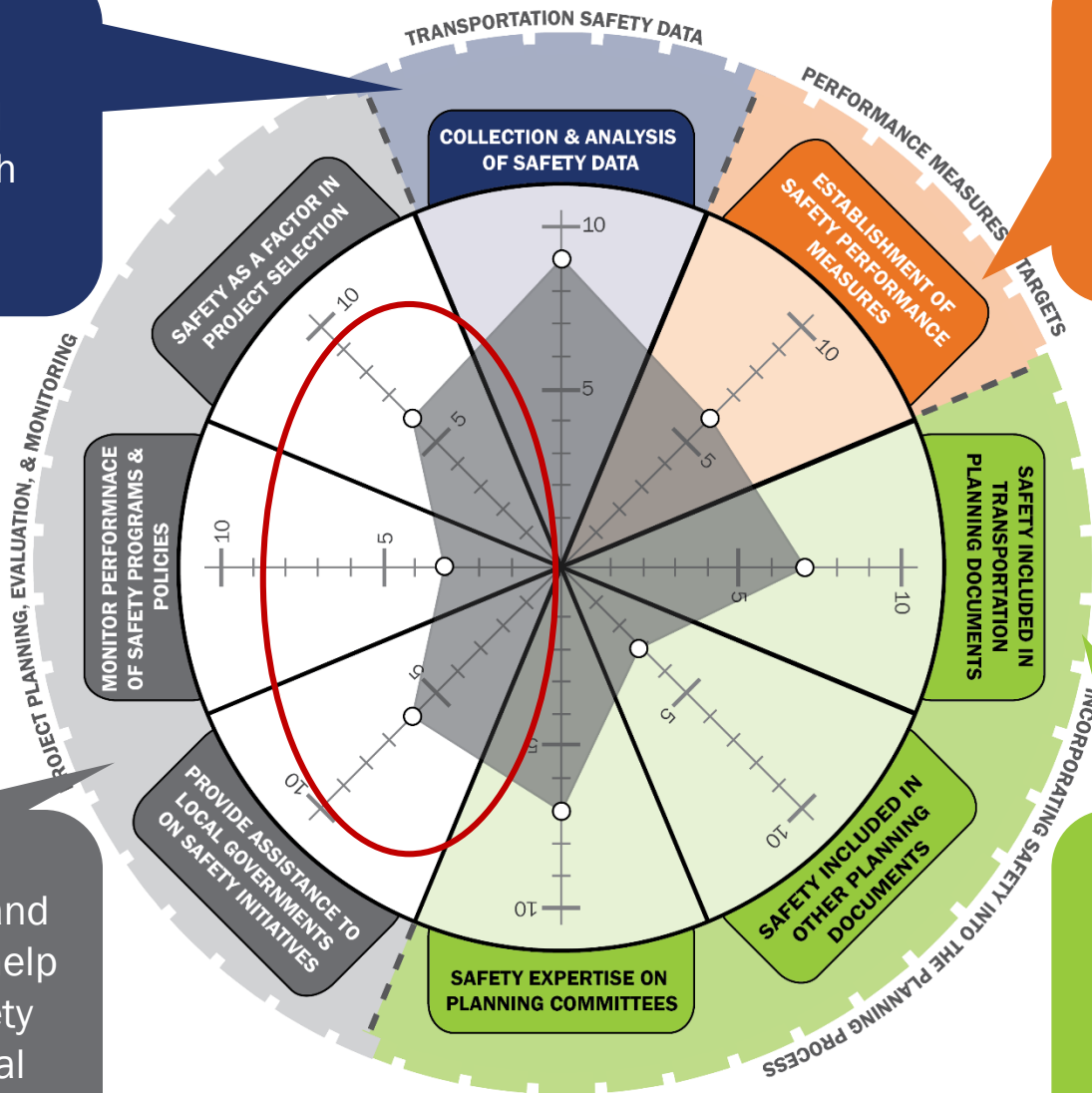


Strengths in collecting and analyzing crash data.

General understanding of performance measures, but opportunity to improve.

Weakness: Follow-through and coordination to help implement safety projects on local system.

Safety included in LRTP, but not always in other aspects of their work and committees.



Safety Study Assistance

Road Safety Audits

Systematic Safety Improvements

High/Medium-Cost Spot Safety Treatments

Low/Medium-Cost Spot Safety Treatments

Low-Cost Risk-Based Treatments

PROJECT STRUCTURE:

Understand & Document



Implement & Refine



Mid-Ohio Regional
Planning Commission

JORDAN WHISLER

jwhisler@morpc.org

111 Liberty Street, Suite 100
Columbus, Ohio 43215

Phone: 614.233.4148

www.morpc.org

