

MEETINGS HELD

Housing Working Group
November 28
February 9
May 9

Transportation Working Group
December 2
February 7
May 15

Water/Energy/
Broadband Working Group
November 29
February 16

Economic Development Working Group
August 3
February 6

Study Funders
August 3
May 12

STUDY GOAL

“To analyze multifaceted existing factors and their projected growth potential to develop a strategy for the area for the next 10 to 20 years; and to help Central Ohio stakeholders position the Rickenbacker Area as a complete community centered around a successful international logistics hub.”

BACKGROUND: The Rickenbacker area has grown into an important engine in Central Ohio’s economy. In 2007, the area stakeholders worked with MORPC on a transportation study that resulted in a number of transportation improvement recommendations, including the construction of Rickenbacker Parkway, the East-West connector, and the Alum Creek Drive expansion. Ten years after the completion of the study, nearly all the improvements recommended by the 2007 study had

been implemented. The success of this study encouraged Central Ohio stakeholders to launch a more comprehensive study that looks at transportation, water/sewer and energy infrastructure as well as housing and economic development elements. Most importantly, the 2018 Rickenbacker Area Comprehensive Study considers the relationship among these land development factors and will result in recommendations reflective of these considerations.

WORKING GROUPS - PROGRESS

Housing

- Preliminary
- Housing & Transportation Affordability Index
- School Districts Analysis

Transportation

- Land Use Forecasts
- Review of Traffic Volumes Forecast
- Transportation Projects Identification
- Project Evaluation Criteria

Water/Energy/Broadband

- Preliminary Data Gathering (GIS, other)
- Developing existing conditions
- Water & Sewer Agreements Inventory

Economic Development

- Information Gathering (incentives, case studies)
- Infrastructure connections (Broadband needs, water & sewer needs)
- Future visioning



UPCOMING TASKS

Upcoming Meetings: The economic development and water/energy/broadband working groups will be meeting in July.

Study Area Population Trends: This will include age, education, home ownership, and other trends to better understand how the area has evolved over the years.

Developer Interviews: Land developers will be approached with a series of questions to help the study team understand housing development constraints from the developers' perspective.

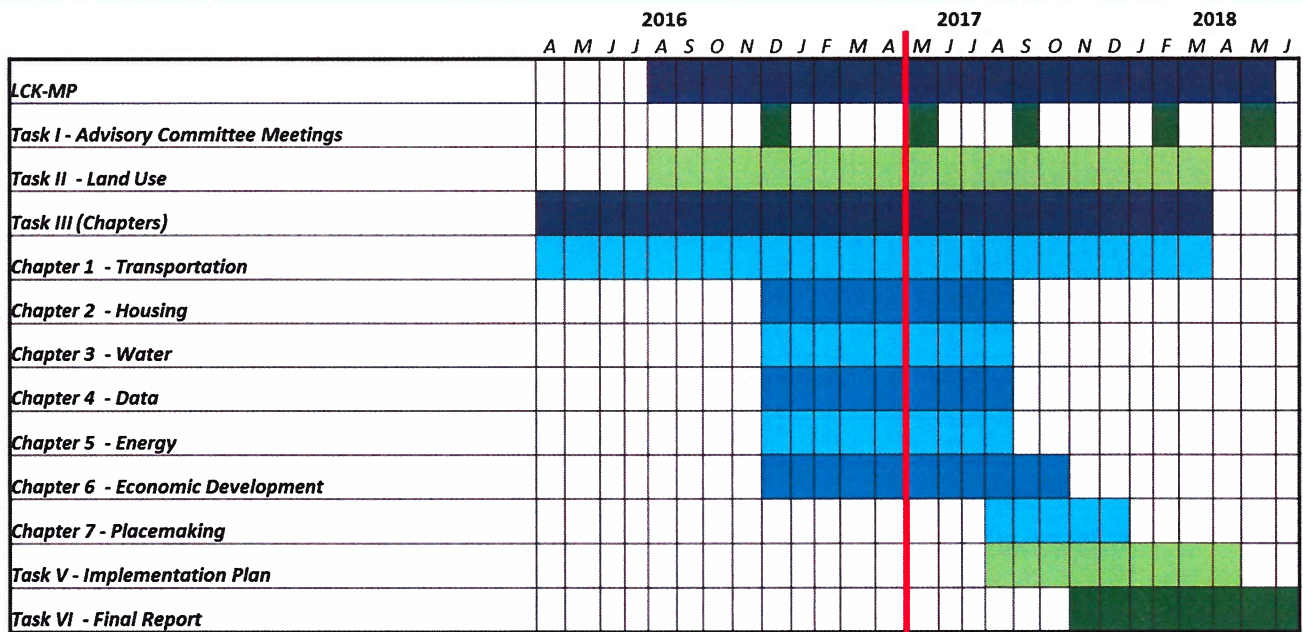
GREAT Riders Survey: To be conducted in November, this survey will inform workforce mobility analyses as well as bike/pedestrian infrastructure improvement needs.

PROJECT ADMINISTRATION

Communications strategy: As the various study sections enter the analysis and recommendations phase, the MORPC team will be providing progress updates every two months to keep stakeholders and members of the public engaged and informed.

Area Study Funders Meetings: In addition to the study progress updates, the study funders will be meeting regularly to review the work from each working group, and to provide input and direction as the study team develops strategies for area improvements.

2018 RICKENBACKER AREA STUDY TIMELINE



We are here



RICKENBACKER
• AREA STUDY •

For more information, please contact:

Dina Lopez
Principal Planner
Transportation Systems & Funding
MORPC
dlopez@morpc.org
(614) 233-4149

Maria Schaper, AICP
Senior Planner
Transportation Systems & Funding
MORPC
mschaper@morpc.org
(614) 233-4153