

FRANKLIN COUNTY ENGINEER COMPLETE STREETS IMPLEMENTATION KIT

Overview

In 2019, the Franklin County Engineer's Office adopted a Complete Streets Policy. The Policy seeks to meet the transportation needs of Franklin County by providing streets that safely accommodate all users, regardless of their mode of transportation, age, or ability. The Franklin County Engineer's Office requested MORPC technical assistance to guide them in the implementation of the Complete Streets Policy through the development of a Complete Streets Toolkit.

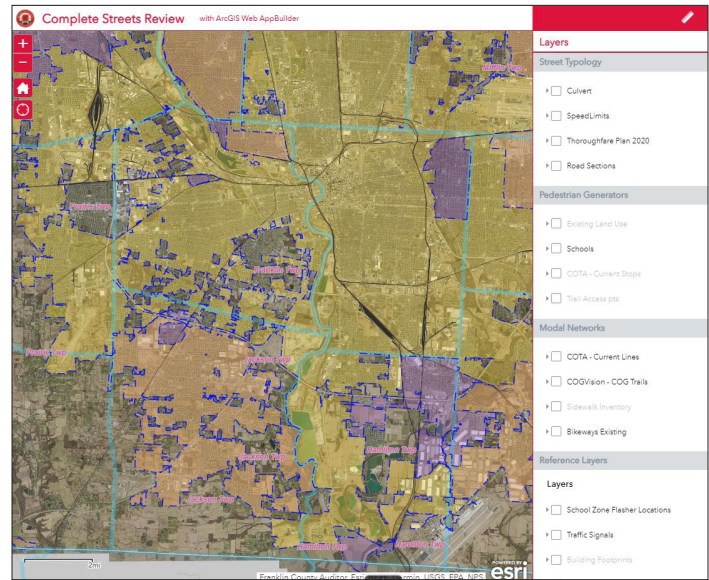
Services Provided

MORPC worked closely with Franklin County Engineer's Office staff to understand the existing policies and procedures related to roadway planning and design within the agency in order to identify the most effective methodology for incorporating Complete Street design into agency processes. This was a key step in providing the most relevant guidance as possible.

Program Deliverables

In collaboration with Franklin County Engineer's Office staff, MORPC developed the following resources as part of the Complete Streets Toolkit:

- » *A Complete Streets Non-Infrastructure Toolkit* that provides information about best practices and case studies regarding various aspects of Complete Street implementation.
- » *A Complete Streets Implementation Workbook* that provides a step-by-step guide for assessing roadway conditions, available data, and other important information to help inform the decision-making process for roadway design.
- » *A Complete Streets Data Review Interactive Map* that includes all of the available data necessary to review as part of the Complete Street design process. The map is designed to be reviewed in association with the steps outlined in the *Complete Streets Implementation Workbook*.



The interactive map provides agency staff with all relevant, available data in one location for review.

Community Implementation

The Franklin County Engineer's Office is already making use of these resources in multiple ways:

- » To inform decisions about pedestrian and bike facilities on road and bridge projects
- » To provide comments on development projects
- » To provide comments on Franklin County Economic Development and Planning projects and applications
- » To illustrate options during project scoping
- » To provide a foundation for alternative evaluation reports and feasibility studies
- » To support grant and funding applications

Project Manager

Ronni G. Nimps

Franklin County Engineer | Complete Streets Coordinator
(614) 525-5123 | rnimps@franklincountyengineer.org