

# ALUM CREEK DRIVE WIDENING (RICKENBACKER AREA)

**PROJECT NAME:** Alum Creek Dr. Widening

**LAYMAN NAME:** Alum Creek Drive Widening (SR 317 to Groveport Road)

**SUBMITTED BY:** The Franklin County Engineers Office

**ODOT PROJECT ID:** New Project (PID TBD)

**MORPC MTP PROJECT:** Yes

**COMPETITIVE ADVANTAGE PROJECT:** Yes

**TOTAL PROJECT COST:** \$52.04 million

**CURRENT TRAC STATUS:** New Project

**TRAC STATUS REQUEST:** Tier II - Development

## 2021 APPLICATION TRANSPORTATION REVIEW ADVISORY COUNCIL (TRAC)

### PROJECT OVERVIEW:

This project will widen Alum Creek Drive to include a third through-lane in each direction and replace bridges over Big Walnut Creek. It includes a sidewalk on one side and a shared use path on the other. The Franklin County Engineer's Office is requesting \$4.93 million, with \$1.73 million for preliminary engineering in fiscal year 2023 and \$3.2 million for detailed design work in fiscal year 2025.

### 2021 TRAC REQUEST:

The Franklin County Engineers Office is requesting Tier II Status and \$4.93 million (\$1.73 million for preliminary engineering, \$3.2 million for detailed design).

### PROJECT SCHEDULE:

#### PLANNING STUDIES

12/31/2021 (In Progress)

#### INTERCHANGE STUDIES

Not Started (TBD)

#### PRELIMINARY ENGINEERING

Not Started (TBD)

#### ENVIRONMENTAL/NEPA APPROVAL

Not Started (TBD)

#### DETAILED DESIGN

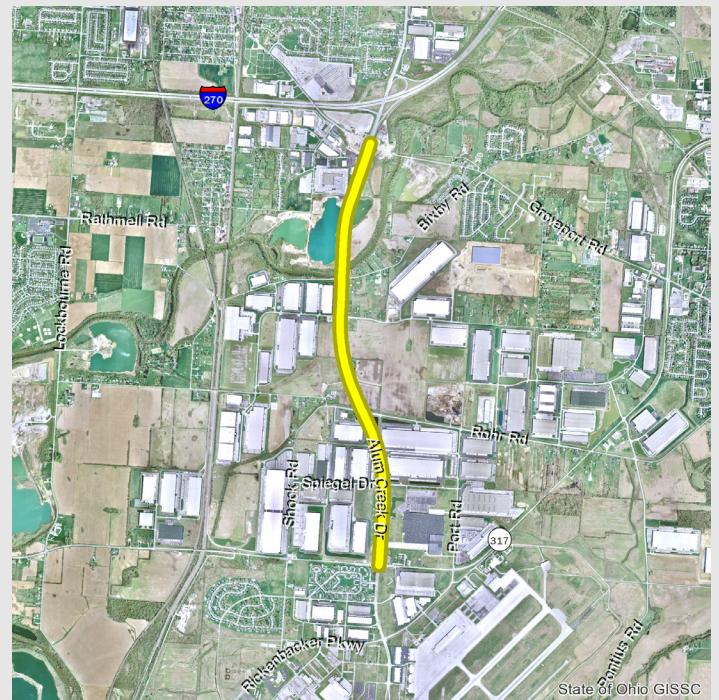
Not Started (TBD)

#### RIGHT-OF-WAY ACQUISITION

Not Started (TBD)

#### UTILITY RELOCATION

Not Started (TBD)



MID-OHIO REGIONAL  
**MORPC**  
PLANNING COMMISSION