



MID-OHIO REGIONAL
MORPC
PLANNING COMMISSION



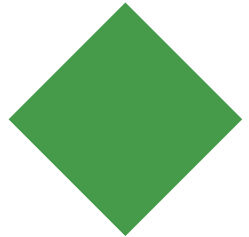
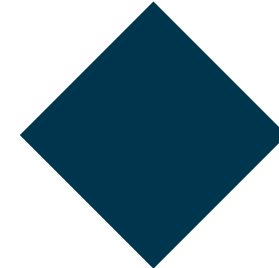
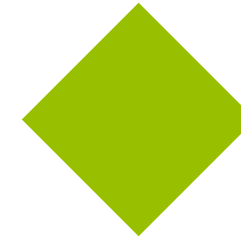
PLAN AMENDMENT

SEPTEMBER 2022

2020-2050 COLUMBUS AREA METROPOLITAN TRANSPORTATION PLAN

WHAT ARE WE ASKING OF YOU?

- Action on Resolution T-9-22





MID-OHIO REGIONAL
MORPC
PLANNING COMMISSION

2020 - 2050 Columbus Area Metropolitan Transportation Plan

Project Location Map

Legend:

- Yellow Diamond: Interchange Modification
- Red Diamond: Intersection Modification
- Red Triangle: New Interchange
- Red Dotted Line: New Roadway
- Red Solid Line: New Freeway
- Red Solid Line: Major Widening
- Orange Solid Line: Minor Widening
- Purple Dotted Line: Bus Rapid Transit
- Purple Solid Line: High Capacity Transit
- Green Solid Line: Bike/Pedestrian
- Yellow Dotted Line: Corridors
- Pink Dotted Line: Lane Management
- Star: Project ID Number
- Black Line: Des Moines Linking
- Blue Line: Railroad
- Light Blue Area: Transportation Planning Area
- Dashed Line: County Boundary

Cost (millions)

\$160.7 - \$163.3
\$2.2 - \$2.5
\$2.2 - \$2.5
\$7.6 - \$41.7
\$1.1 - \$31.3
\$6 - \$18.6
\$20.1
\$108.8
\$24.1

Downtown Columbus

Downtown Delaware

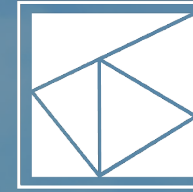
MORPC

Map created by MORPC on 10/10/2019. Map is subject to the conditions of the contract. For more information, please contact MORPC at 614.291.1234 or 614.291.1235. Map is subject to the conditions of the contract. For more information, please contact MORPC at 614.291.1234 or 614.291.1235.



REGIONAL STRATEGIES

- System Management
 - Physical Preservation
 - Operations
 - Safety & Security
 - Demand Management
- System Development
 - Bike & Pedestrian Infrastructure
 - Transit Infrastructure
 - Freight Rail Infrastructure
 - Multimodal Infrastructure Connections
 - Roadway Infrastructure

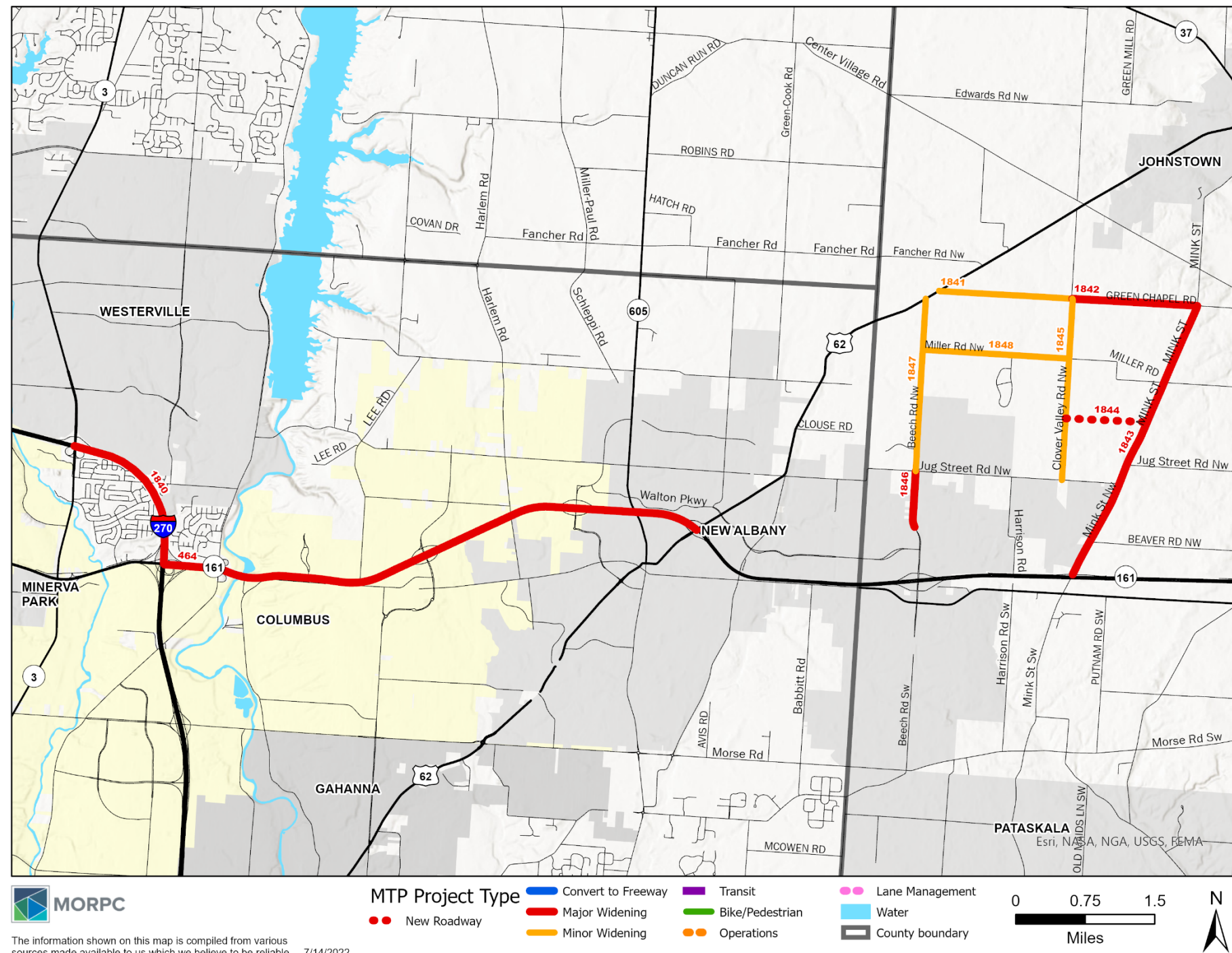




ROADWAY INFRASTRUCTURE STRATEGIES

- RDWY 1: Add capacity, where appropriate, to alleviate existing or anticipated congestion along existing freeways and at interchanges
- RDWY 2: Continue conversion of key divided expressways into limited access freeways
- RDWY 3: Construct new interchanges, where appropriate, to alleviate congestion or support regional development goals
- RDWY 4: Add capacity, where appropriate, to alleviate existing or anticipated congestion along existing arterial and collector corridors
- RDWY 5: Add capacity, where appropriate, at locations such as intersections to alleviate existing or anticipated congestion
- RDWY 6: Construct new roadways, where appropriate, to alleviate congestion or support regional or local development goals
- RDWY 7: Provide efficient connectivity of local roads to the arterial and collector roadway system
- RDWY 8: Facilitate multi-jurisdictional dialogue to improve opportunities for collaboration

PROPOSED AMENDMENTS





PROPOSED AMENDMENTS

Bold italic = new or changed project component

MTP ID	Project Description	Year	Cost Estimate (YOE \$)
464	SR-161 from <i>I-270</i> to US-62, <i>Add one lane each direction</i>	<i>2024</i>	<i>\$65.8 million</i>
<i>1840</i>	<i>I-270 from SR-161 to SR-3; Add one lane in northbound direction</i>	<i>2024</i>	<i>\$19.8 million</i>
<i>1841</i>	<i>Green Chapel Rd. from US 62 to Clover Valley Rd; Add turn lanes and complete street facilities to 2 lane roadway</i>	<i>2024</i>	<i>\$19.5 million</i>
<i>1842</i>	<i>Green Chapel Rd. from Clover Valley Rd. to Mink St; Widen road from 2 lanes to 4 lanes total both directions with complete street facilities</i>	<i>2024</i>	<i>\$19.5 million</i>
<i>1843</i>	<i>Mink St. from SR-161 eastbound ramps to Green Chapel Rd; Widen road from 2 lanes to 4 lanes total both directions with complete street facilities</i>	<i>2024</i>	<i>\$38.4 million</i>
<i>1844</i>	<i>Harrison Rd. Extension from Clover Valley Rd. to Mink St.; New Roadway 1 lane(s) each direction with complete street facilities</i>	<i>2024</i>	<i>\$9.5 million</i>
<i>1845</i>	<i>Clover Valley Rd. from Jug St. to Green Chapel Rd. Add turn lanes and complete street facilities to 2 lane roadway</i>	<i>2024</i>	<i>\$15.9 million</i>
<i>1846</i>	<i>Beech Rd. from Innovation Corridor way to Jug St.; Widen road from 2 to 4 lanes total both directions with complete street facilities</i>	<i>2030</i>	<i>\$9.3 million</i>
<i>1847</i>	<i>Beech Rd. from Jug St. to US-62; Add turn lanes and complete street facilities to 2 lane roadway</i>	<i>2030</i>	<i>\$16.1 million</i>
<i>1848</i>	<i>Miller Rd. from Beech Rd. to Clover Valley Rd; Add turn lanes and complete street facilities to 2 lane roadway</i>	<i>2030</i>	<i>\$13.7 million</i>



FISCAL CONSTRAINT

- Additional project cost amount does not exceed originally estimated resources
- Fiscal constraint remains in-tact

AIR QUALITY CONFORMITY

- Federally required analysis to confirm MTP is in conformity with the State Implementation Plan (SIP) to meet air quality standards
- Analysis completed – Conformity Determination expected

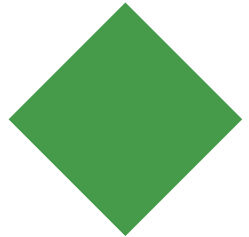
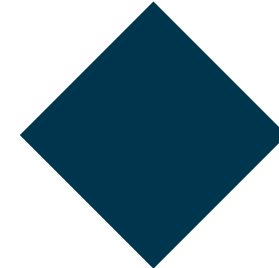
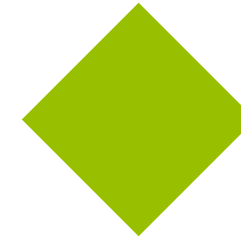


PUBLIC COMMENTS

- Comment period open July 15 - August 15, 2022
- 10 comments received
 - Calls for consideration and incorporation of transit and other multi-mobility elements into the identified infrastructure improvements and future infrastructure improvements beyond the area immediately serving the site.
 - Calls for transportation improvements on a broader network than is included in the identified projects
 - Response: Language included in Resolution T-9-22 directing staff to continue working with partners on multi-mobility planning for broader region

WHAT ARE WE ASKING OF YOU?

- Action on Resolution T-9-22



Maria Schaper, AICP

Associate Director, Transportation Planning

Mid-Ohio Regional Planning Commission

T: 614.233.4153

mschaper@morpc.org

111 Liberty Street, Suite 100
Columbus, OH 43215



MID-OHIO REGIONAL
MORPC
PLANNING COMMISSION