

Technical Assistance Program Update

TAC Meeting
October 5, 2022



MID-OHIO REGIONAL
MORPC
PLANNING COMMISSION

Agenda

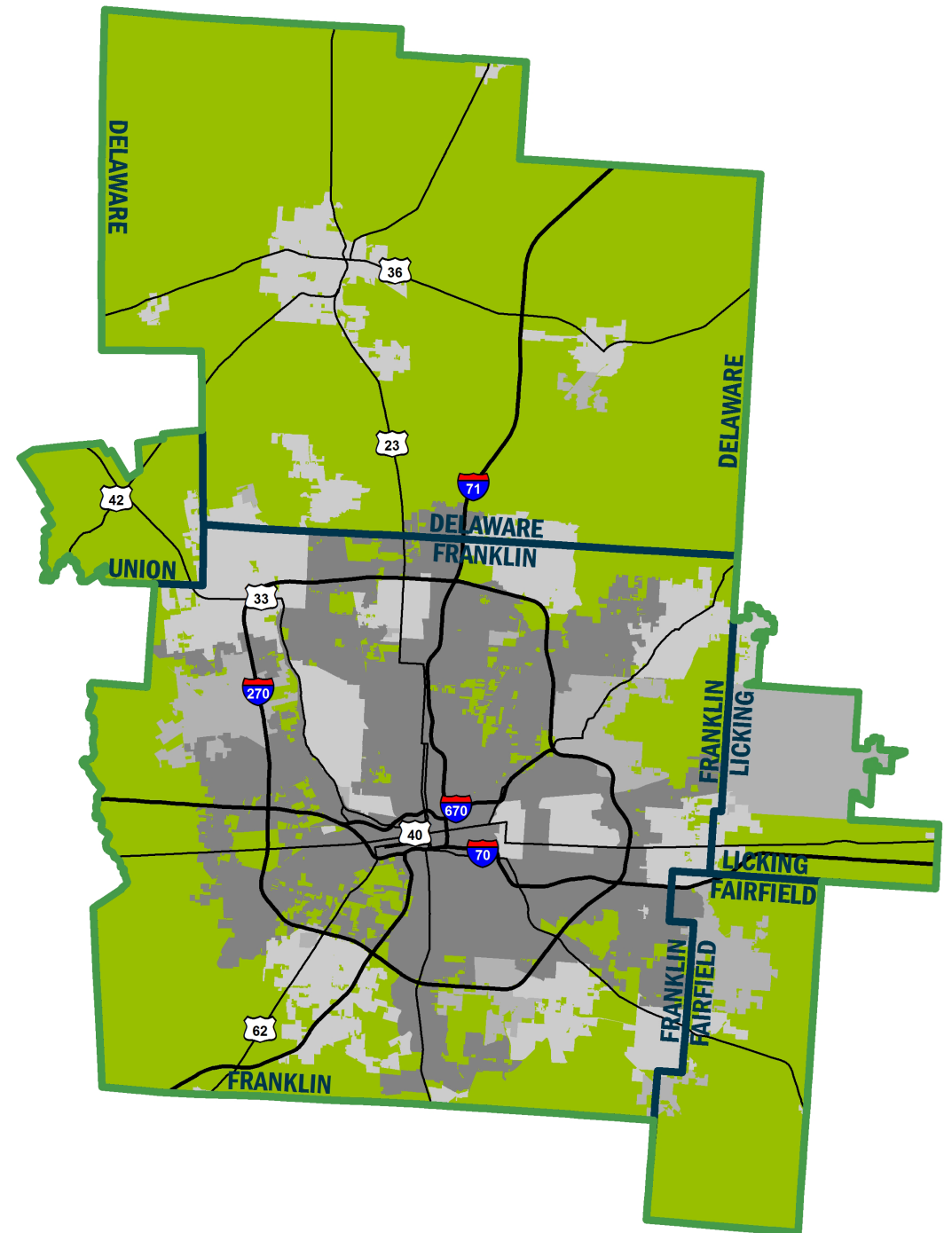
- Technical Assistance Program Overview
- Cycle 2 Project Wrap-Up (2022 Program)
 - Columbus & Franklin County Metro Parks
 - City of Sunbury
 - City of Columbus
 - City of Dublin
- Cycle 3 Preview (2023 Program)
 - Activity Types
 - Important Dates



MORPC

Program Overview

- Technical Assistance Program (TA Program) **provides MORPC staff assistance** to local government members within the Metropolitan Planning Organization (MPO)
- Community-based **planning services that advance the goals in the MTP** through implementation of specific MTP strategies
- **Awarded through a competitive application process**, evaluated by committee
- Services **completed within 6-9 months**



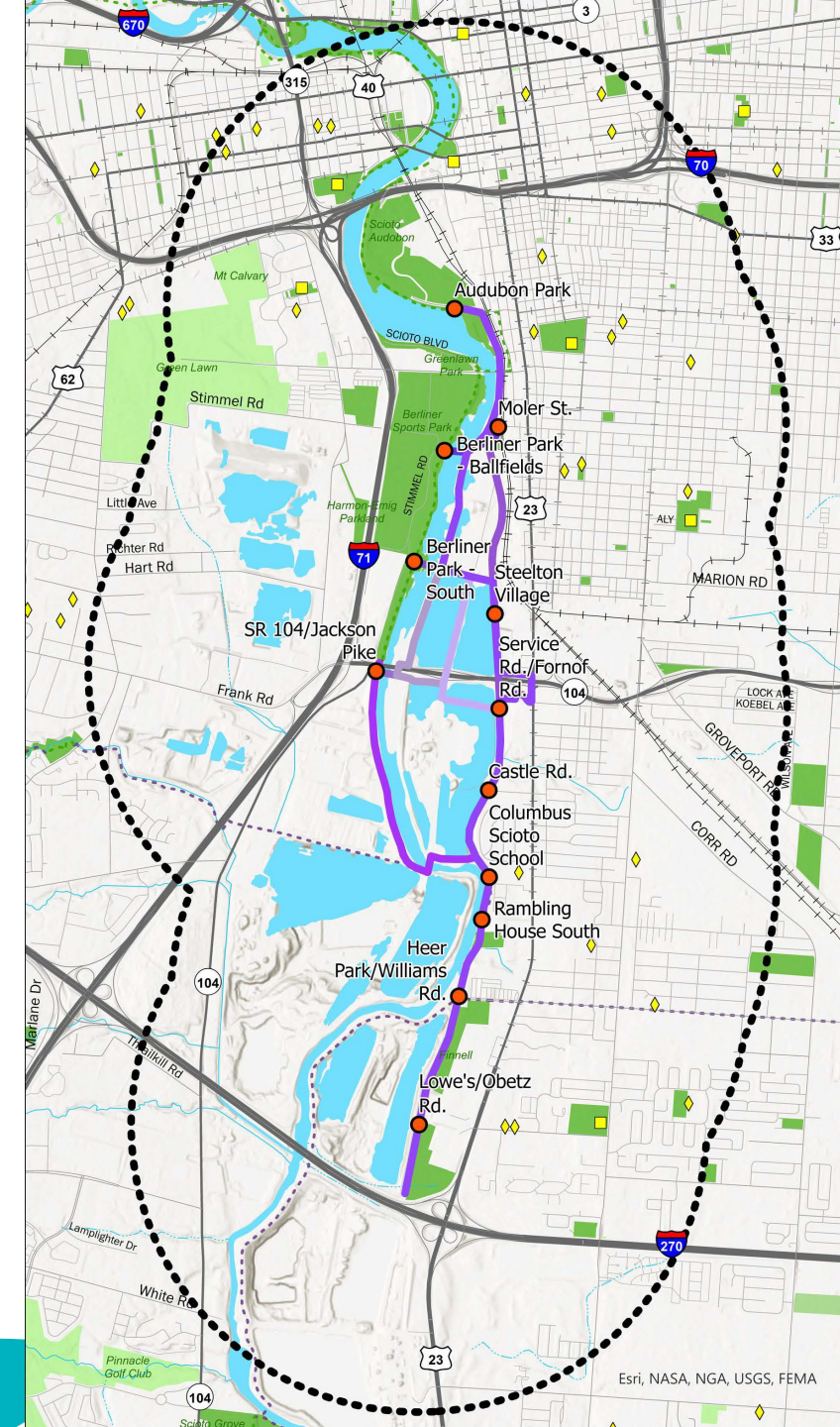
2022 Program Services



Applicant Agency	Requested Activity	Focus Area
Franklin County Metro Parks	Central Ohio Greenways Vision Refinement	Scioto Trail Southern Extension
City of Sunbury	Central Ohio Greenways Vision Refinement	Ohio to Erie Trail Access and Connectivity
City of Columbus	Central Ohio Greenways Vision Refinement	Downtown Trail Access and Connectivity
City of Dublin	Central Ohio Greenways Vision Refinement	Cross-Jurisdictional Trail Access and Connectivity

Metro Parks – Scioto Trail Extension

- Stakeholder Engagement
 - Focused, individual conversations to identify feasible routes
 - Columbus Rec & Parks
 - Ohio Department of Natural Resources
 - Ohio Department of Transportation
 - AEP
 - COG Board & Trail Development Working Group
 - 19 alternatives based on barriers, suitable properties, and potential access points



Metro Parks – Scioto Trail Extension



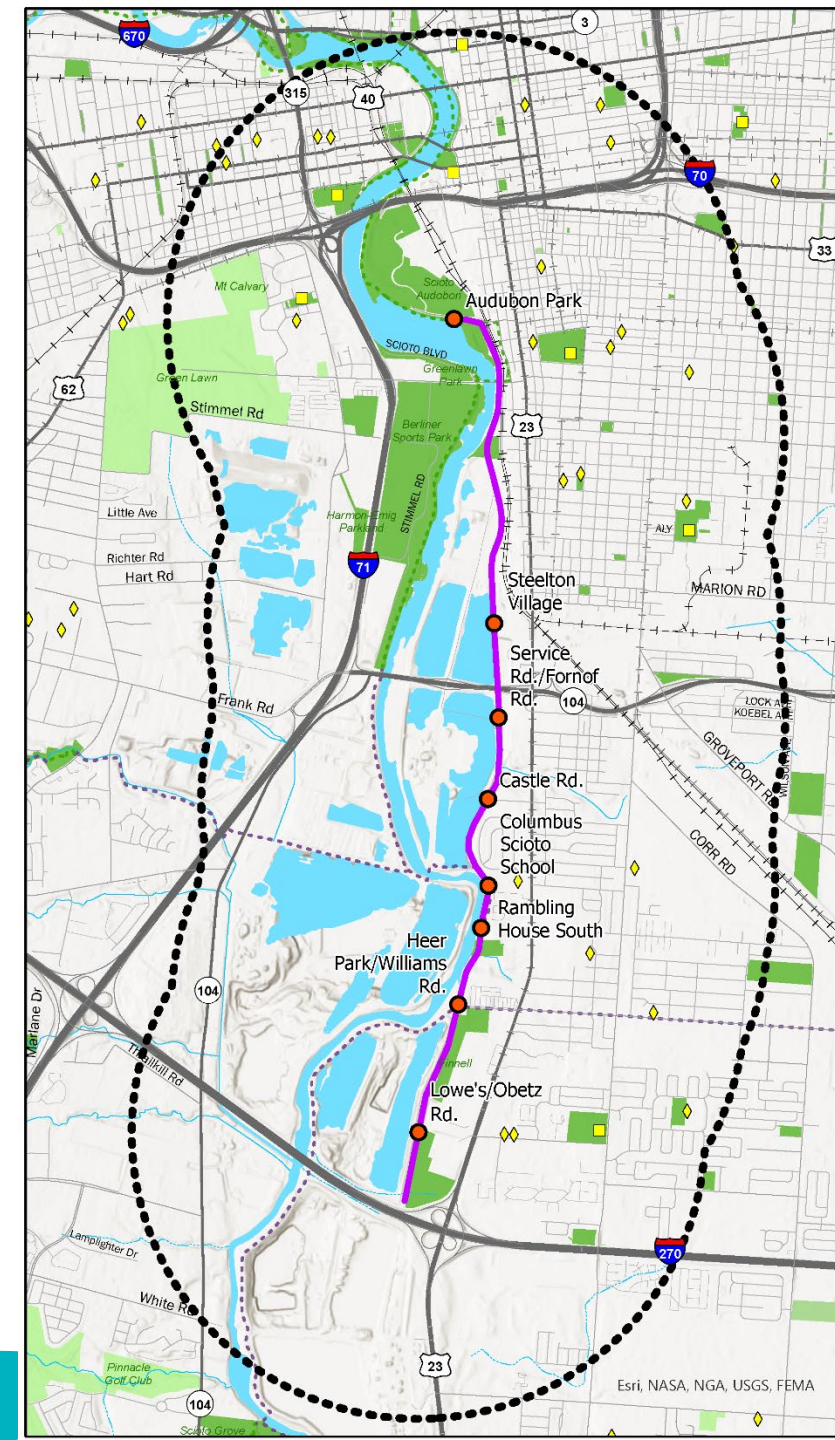
MORPC

- Alternatives Analysis
 - Spreadsheet-based tool
 - Weighted evaluation criteria
- Analysis Criteria
 - Accessibility by Residents
 - Connectivity to Destinations
 - Constructability
 - Trail User Experience
 - Environmental Impacts

	A	B	C	D	E	F	G	H
	Scioto Trail Extension Alternatives Analysis - Raw Inputs	Underpass of SR 104; river crossing south of SR 104	Original COG Alignment on west bank of Scioto	East bank of Scioto; north river crossing; underpass of SR 104	East bank of Scioto; central river crossing; underpass of SR 104	East bank of Scioto; north river crossing; underpass of SR 104; Moler St. connector	Haul Rd.; north river crossing; widened Haul Rd. underpass of SR 104	Haul Rd.; central river crossing; widened Haul Rd. underpass of SR 104
1								
2								
3	Accessibility by Residents	Alignment 1	Alignment 2	Alignment 3A	Alignment 3B	Alignment 3C	Alignment 4A	Alignment 4B
4	Number of potential trail access points	7	5	7	7	8	7	7
5	Total number of residents (within 1.5 miles)	43,438	43,436	53,147	48,535	60,118	53,147	48,535
6	Percent of households with no vehicle access	8.5%	8.2%	10.8%	9.0%	11.5%	10.8%	9.8%
7	Percent of residents >65 years old	12.3%	12.5%	12.8%	12.3%	12.4%	12.8%	12.9%
8	Percent of residents below poverty line	18.3%	17.7%	19.7%	18.8%	21.1%	19.7%	20.3%
9	Percent of minority residents	24.6%	24.3%	26.4%	25.1%	31.6%	26.4%	26.2%
10								
11	Connectivity to Destinations	Alignment 1	Alignment 2	Alignment 3A	Alignment 3B	Alignment 3C	Alignment 4A	Alignment 4B
12	Number of jobs	20,147	19,218	28,078	24,175	30,621	28,078	21,711
13	Number of schools and community centers	12	9	21	15	22	21	15
14	Number of transit stops	79	73	140	96	177	140	96
15	Connections to existing and planned trails	High	High	Medium	Medium-High	Medium	Medium	Medium-High
16	Parks and open space	Medium	Medium-Low	Medium-High	Medium-High	Medium-High	Medium	Medium
17	Potential to support trail-oriented development	Medium	Low	Medium	Medium	Medium	Medium	Medium
18								
19	Constructability	Alignment 1	Alignment 2	Alignment 3A	Alignment 3B	Alignment 3C	Alignment 4A	Alignment 4B
20	Estimated construction cost (do not edit; see Reference tab)	\$16,198,000	\$9,985,300	\$19,134,700	\$17,009,200	\$19,633,900	\$18,748,600	\$16,623,100
21	Total length of new trail alignment (ft)	18,200	17,270	24,480	21,530	25,760	23,490	20,540
22	Number of landowners and leaseholders impacted	4	4	5	4	5	5	4
23	Impacts to existing roadways	Medium-Low	Low	Medium-Low	Medium-Low	Medium-Low	Medium-High	Medium-High
24	Length of river crossing (ft)	600	0	650	550	650	650	550
25	Reuse of existing infrastructure	Low	High	Medium	Medium-Low	Medium	Medium-High	Medium
26								
27	Trail User Experience	Alignment 1	Alignment 2	Alignment 3A	Alignment 3B	Alignment 3C	Alignment 4A	Alignment 4B
28	At-grade roadway crossing conflicts	Medium	Low	Medium	Medium	Medium	High	High
29	Traffic volumes of adjacent roadways	Medium	Low	Medium	Medium	Medium	High	High
30	Level of scenic views	Medium-High	High	High	High	High	Medium-High	Medium
31	Trail visibility	Medium-High	Low	Medium-Low	Medium-Low	Medium-Low	Medium-High	Medium-High
32	Directness of route	High	High	Medium-High	Medium-High	Medium-High	Medium	Medium
33								
34	Environmental Impacts	Alignment 1	Alignment 2	Alignment 3A	Alignment 3B	Alignment 3C	Alignment 4A	Alignment 4B
35	Length of trail within floodplain (ft)	18,200	9,350	18,660	18,800	18,660	20,670	20,800
36	Number of stream crossings	1	1	1	1	1	1	1
37	Scioto River impacts	High	Low	Medium-Low	Medium-High	Medium-Low	Medium-Low	Medium-High
38	Potential vegetation impacts	Medium	Low	Medium-Low	Medium	Medium-High	Medium	Medium-Low
39	Proximity to hazardous waste	Low	Low	Medium-Low	Low	Medium-Low	Medium-Low	Low
40								

Metro Parks – Scioto Trail Extension

- Implementation
 - Preferred alignment identified
 - Additional stakeholder & community engagement
 - Funding applications
 - Preliminary engineering
 - Potential for phasing implementation



Sunbury - Ohio to Erie Trail Access & Connectivity



MORPC

NEEDS ASSESSMENT

- **Existing Conditions Analysis**
 - Existing and Proposed Multi-Use Paths
 - Roadway Improvement Plans
 - Places of Interest for Connections
 - Developable Lands / Future Development Potential
- **Challenges and Opportunities**
 - Gaps in the Trail / Alignment with COG Vision
 - Major Corridors and Levels of Traffic Stress (LTS)
 - Existing Routes for Points of Interest
 - Bicycle/Pedestrian Crash History (2017 to 2021)
 - Barriers to Connectivity
- **Site Visit**
- **Public Engagement**

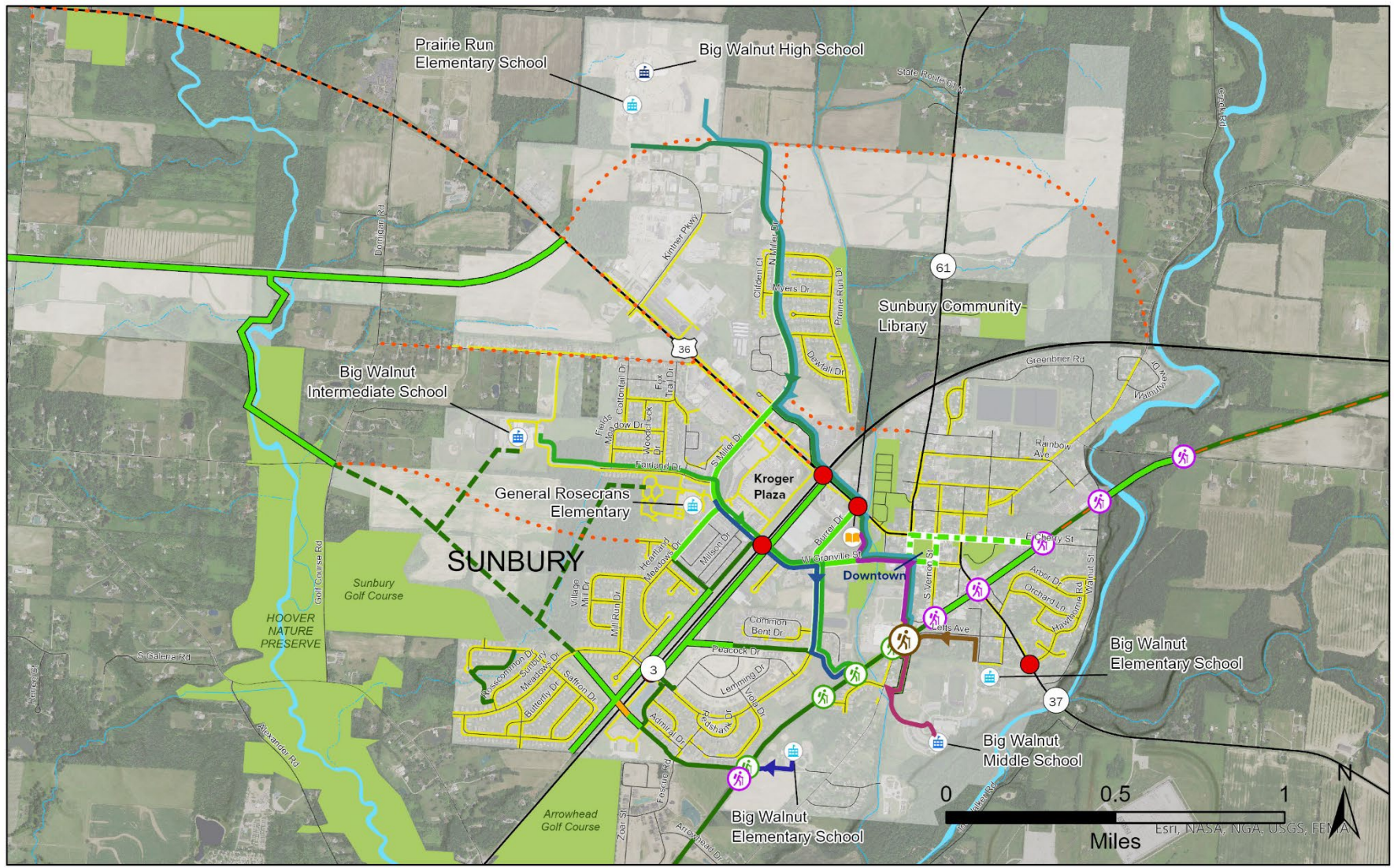
RECOMMENDATIONS

- **Short-Term Projects (Within 3 Years)**
 - Dedicated Bike Lanes (Painted)
 - Shared Bike Lanes (Painted)
 - Multi-Use Path/Trail Acquisition
- **Medium-Term Projects (3 to 5 Years)**
 - Multi-Use Path/Trail Acquisition
 - New Trail Construction
 - Pedestrian Advance Warning Signs & Yield Lines
 - Crosswalk Signal & Marking Upgrades
- **Long-Term Projects (Beyond 5 Years)**
 - New Trail Construction
 - Median Refuge Islands
 - Crosswalk Signal Installation
- **Funding Opportunities**

Sunbury - Ohio to Erie Trail Access & Connectivity



MORPC



Trail Access Points

- Proposed Trail Access
- Trail Access
- Trail Head

MTP 2050 Projects

- Bike/Ped
- Roadway Modification*
- New Multi-Use Path
- Dedicated Bike Lanes (Painted)
- Shared Bike Lanes (Painted)
- Pedestrian Overpass
- Intersection Improvements
- Big Walnut Elementary School - Baughman Street
- Big Walnut Elementary School - Columbus Street
- General Rosecrans Elementary School
- Prairie Run Elementary School
- Big Walnut Intermediate School
- Big Walnut Middle School
- Big Walnut High School
- Sunbury Community Library

Columbus Downtown Trail Access & Connectivity



MORPC

NEEDS ASSESSMENT

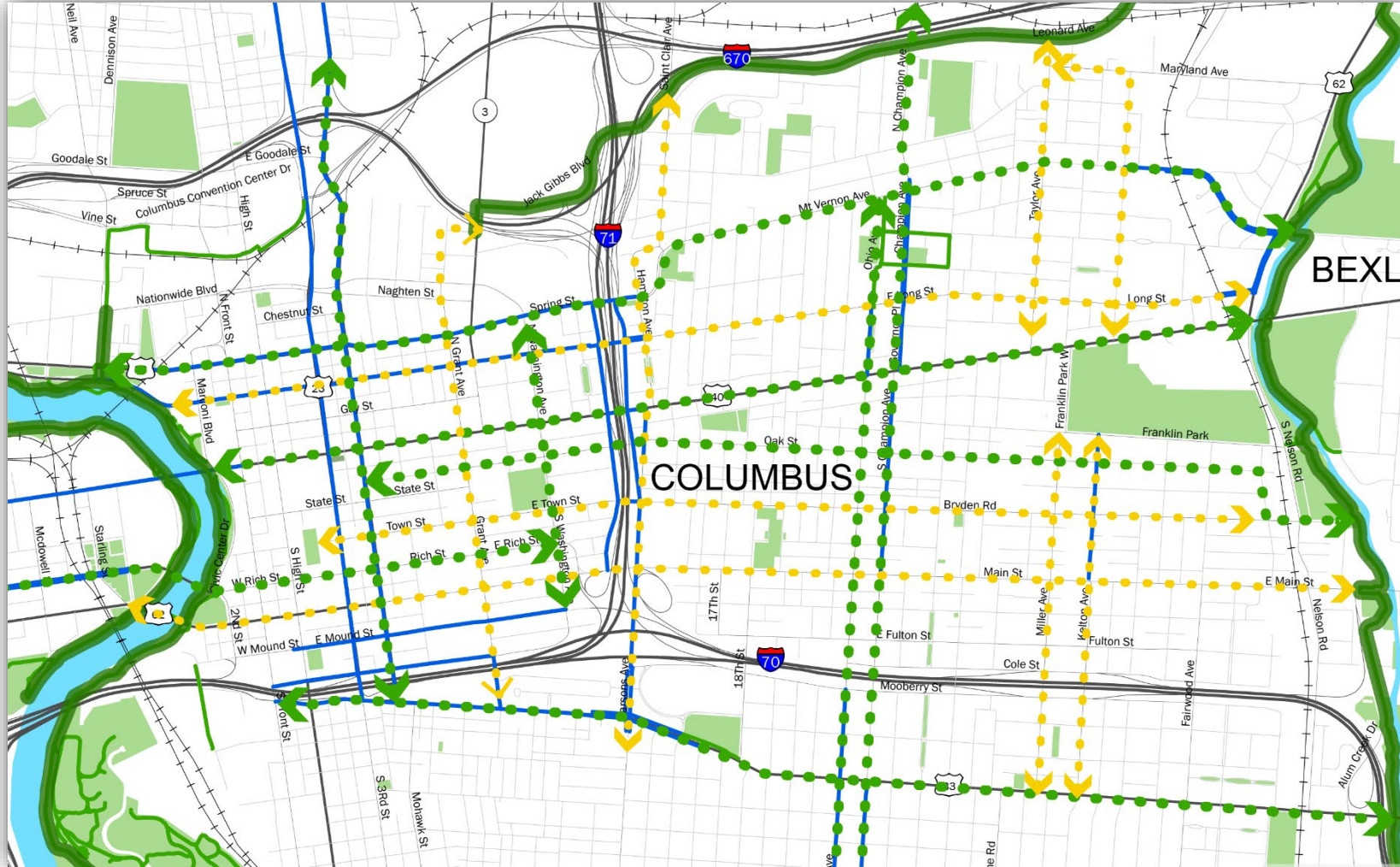
- **Existing Conditions Analysis**
 - Existing and Planned Bicycle Facilities
 - Roadway Improvement Plans
 - Places of Interest for Connections
- **Alternatives Analysis**
 - Crash History and Stress
 - Demographics and Equity
 - Connectivity and Destinations
- **Site Visits**
 - Engineer Bike Rides
- **Stakeholder Engagement**

Analysis Category	Factor
Crash History and Stress	Average Traffic Volume
	Bicycle Level of Traffic Stress
	Columbus High Injury Network
	Bike and Pedestrian Crashes
	Vehicle-Only Crashes
Demographics and Equity	Population
	Population Under 18
	Population Over 65
	Population Living in Poverty
	Minority Population
	Zero Vehicle Households
Connectivity and Destinations	Jobs
	Schools and Public Places
	Retail and Commercial
	Parks and Green Space
	Transit Stops

Columbus Downtown Trail Access & Connectivity



MORPC



(DRAFT)

RECOMMENDATIONS

- **Review Process**
 - Analysis scores
 - Stakeholder review
 - Physical feasibility
- **Priorities for Next Steps**
 - Primary / Preferred Connections
 - Potential Additional Connections
- **Funding Opportunities**
- **Detailed Report**

Dublin Trail Access & Connectivity



MORPC

NEEDS ASSESSMENT

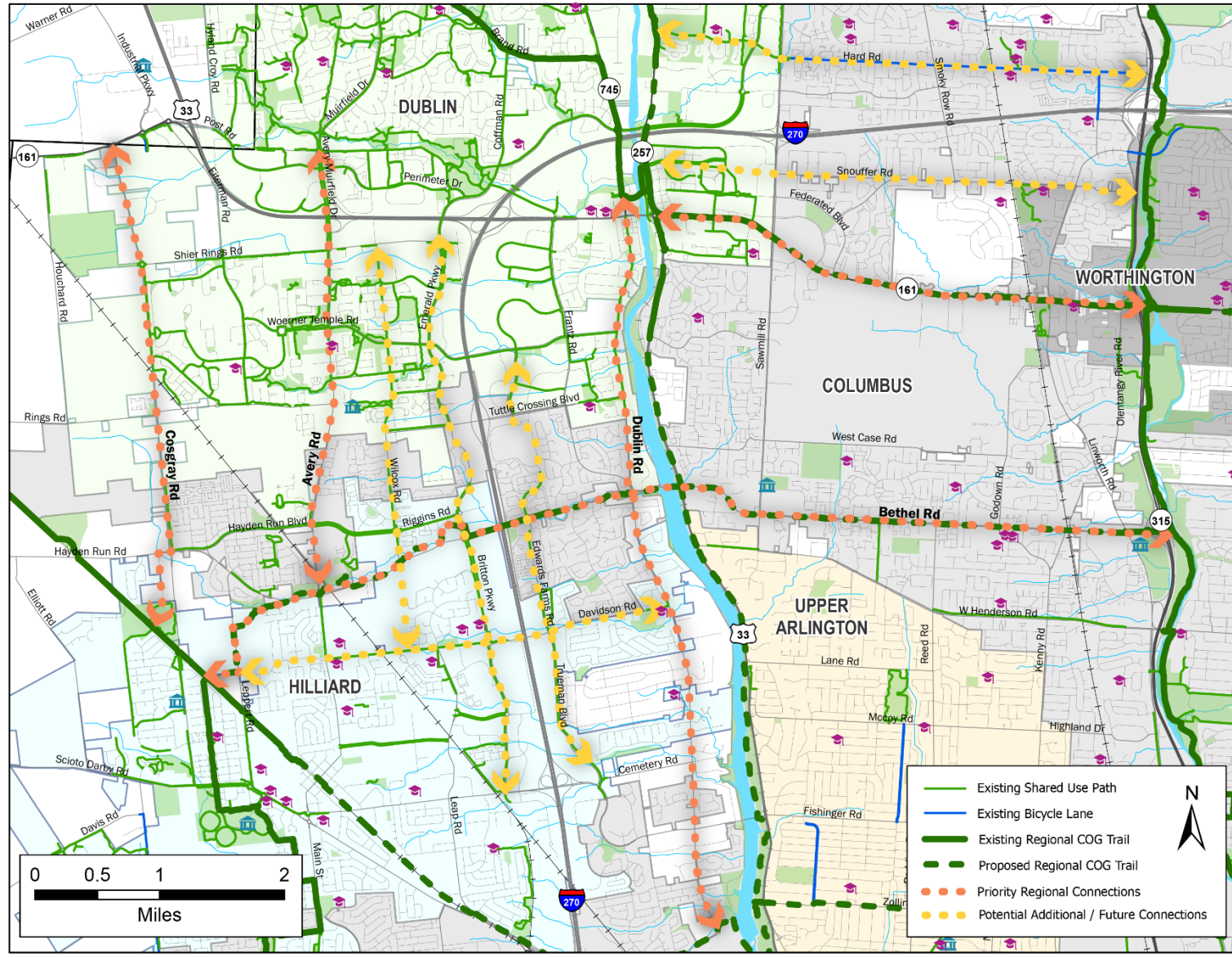
- **Existing Conditions Analysis**
 - Existing and Planned Bicycle Facilities
 - Roadway Improvement Plans
 - Places of Interest for Connections
- **Alternatives Analysis**
 - Crash History and Stress
 - Demographics and Equity
 - Connectivity and Destinations
- **Site Visit**
- **Stakeholder Engagement**



Dublin Trail Access & Connectivity



MORPC



(DRAFT)

RECOMMENDATIONS

- **Review Process**
 - Analysis scores
 - Stakeholder review
 - Physical feasibility
- **Priorities for Next Steps**
 - Primary / Preferred Connections
 - Potential Additional Connections
- **Funding Opportunities**
- **Detailed Report**

2023 Program Information

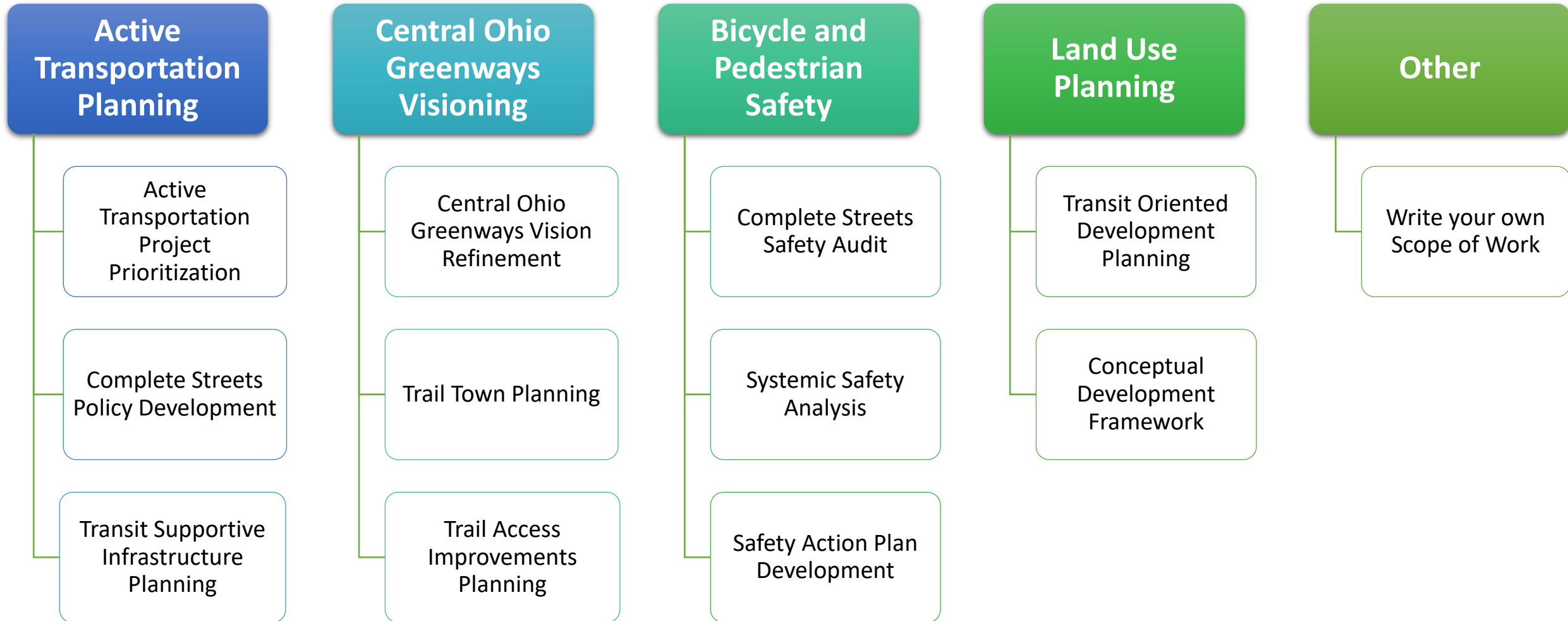


MID-OHIO REGIONAL
MORPC
PLANNING COMMISSION

Technical Assistance Activities



MORPC



Important Dates for 2023 Program Cycle



MORPC

October 2022

- **2023 Program Guide Posted Online**

November 2, 2022

- CAC/TAC Meetings for Review

November 10, 2022

- **Call for Applications**

November 15, 2022

- Informational Webinar

December 9, 2022

- **Deadline to Submit Applications**

January 6, 2023

- Awardees Notified

Week of January 9 & 16

- **Kick-off Meetings with Awardees**

[September 2023]

- Completion of Technical Assistance

www.morpc.org/program-service/technical-assistance-program

THANK YOU!

LAUREN CARDONI

Principal Planner

T: 614.233.4128

lcardon@morpc.org

JORDAN PETROV

Associate Planner

T: 614.233.4226

jpetrov@morpc.org

