



# CORPO SS4A Action Plan

Stakeholder Meeting #4  
February 21, 2024

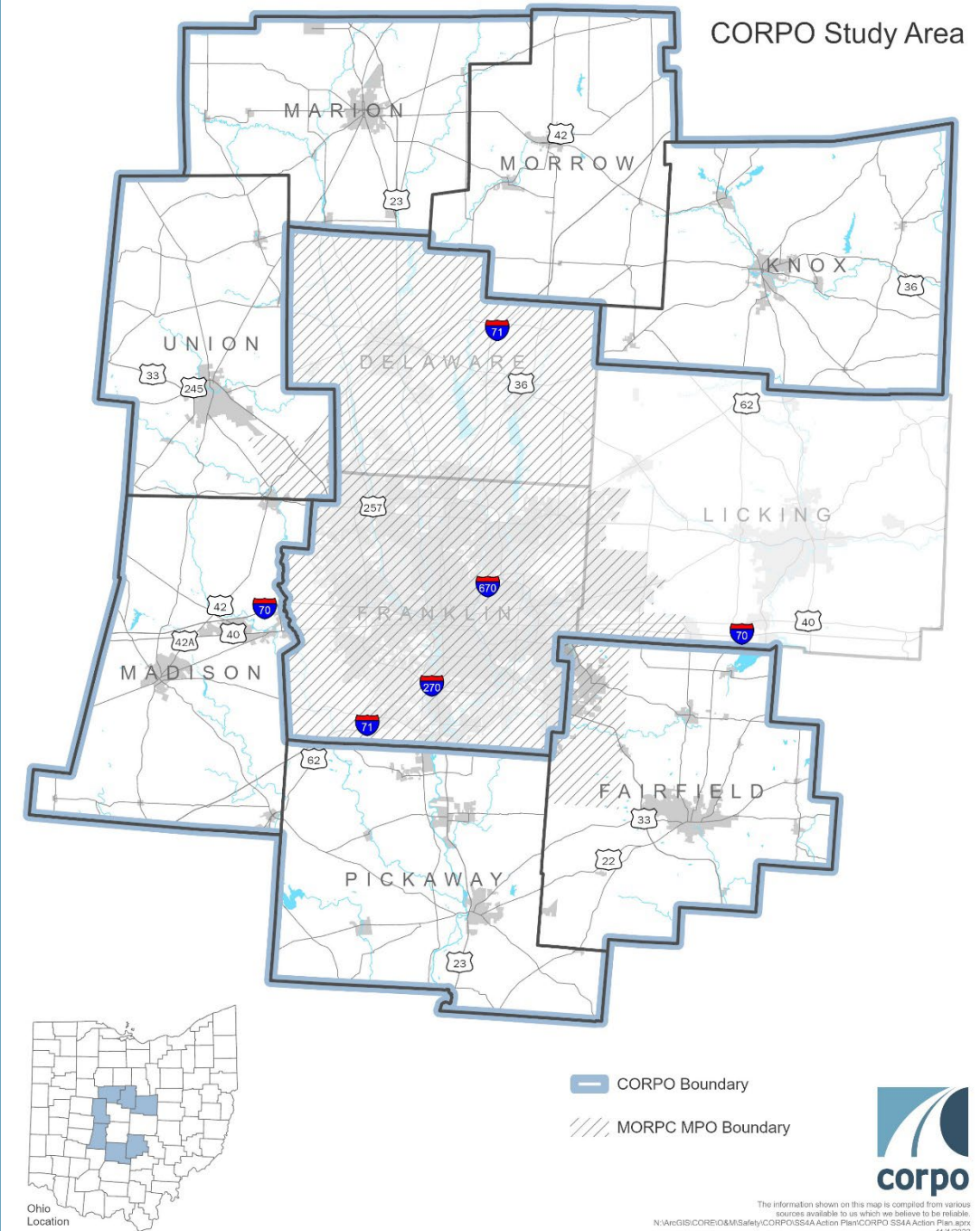
# Agenda

- 1. Welcome and Introductions**
- 2. Project Scope and Timeline Recap**
- 3. Public Survey Highlights**
- 4. Safety Action Plan Development**
- 5. Next Steps**

# Funding Award!

## Safe Streets and Roads for All (SS4A) Federal Grant Award

- Application Round: Year 1 (FY22)
- Funding Awarded: \$200,000 for Planning
- Purpose: Develop a Comprehensive Safety Action Plan for CORPO area
- **Timeline: Fall 2023 through Spring 2024**
- Goal: Coordinate with local agencies interested in applying for Implementation Grant in future years



# SS4A FY24 NOFO

## FY24 NOFO Now Open

2024 [Notice of Funding Opportunity](#) (NOFO) for Safe Streets and Roads for All grants

The FY 2024 NOFO has multiple deadlines:

- **April 4, 2024, 5 p.m. (EDT):** Deadline #1 for Planning and Demonstration Grants.
- **May 16, 2024, 5 p.m. (EDT):** Sole deadline for Implementation Grants. Deadline #2 for Planning and Demonstration Grants.
- **August 29, 2024, 5 p.m. (EDT):** Deadline #3 for Planning and Demonstration Grants.

[www.transportation.gov/grants/SS4A](http://www.transportation.gov/grants/SS4A)

# Action Plan Timeline



SCOPE TASKS	SEP	OCT	NOV	DEC	JAN	FEB	MAR	APR	MAY	JUN
Project Administration			M1							
Existing Conditions Analysis				M2						
Safety Action Plan Development					M3	M4		M5?		
Public Input Survey										
Public Comment on Draft Plan						D	D			
Final Action Plan								D		
<i>CORPO Subcommittee Meetings</i>	M						M*	M*		
<i>CORPO Committee Meetings</i>			M						M*	
<i>Action Plan Adoption</i>									^	
<i>FY24 SS4A Implementation</i>						**		(4)	16	

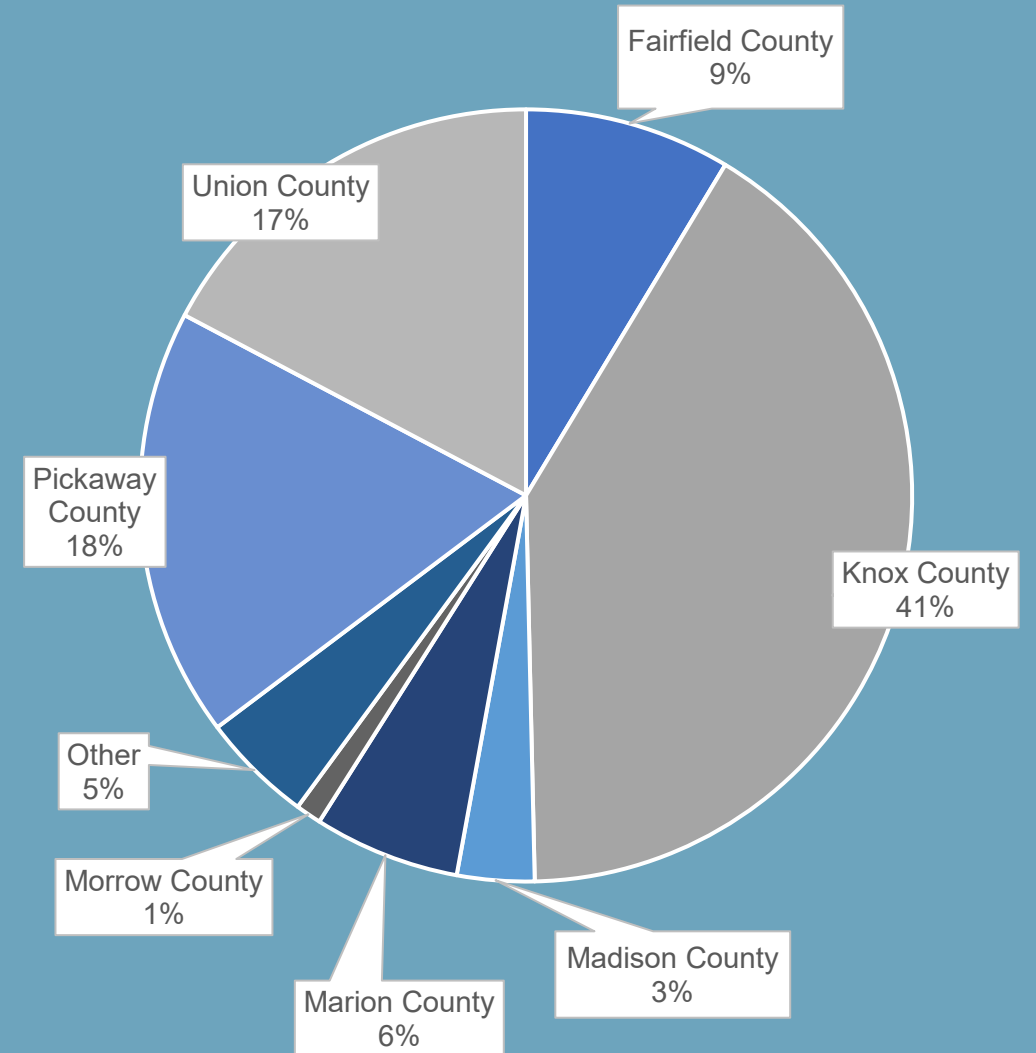
# **PUBLIC SURVEY HIGHLIGHTS**

# Public Input Survey

## Highlights

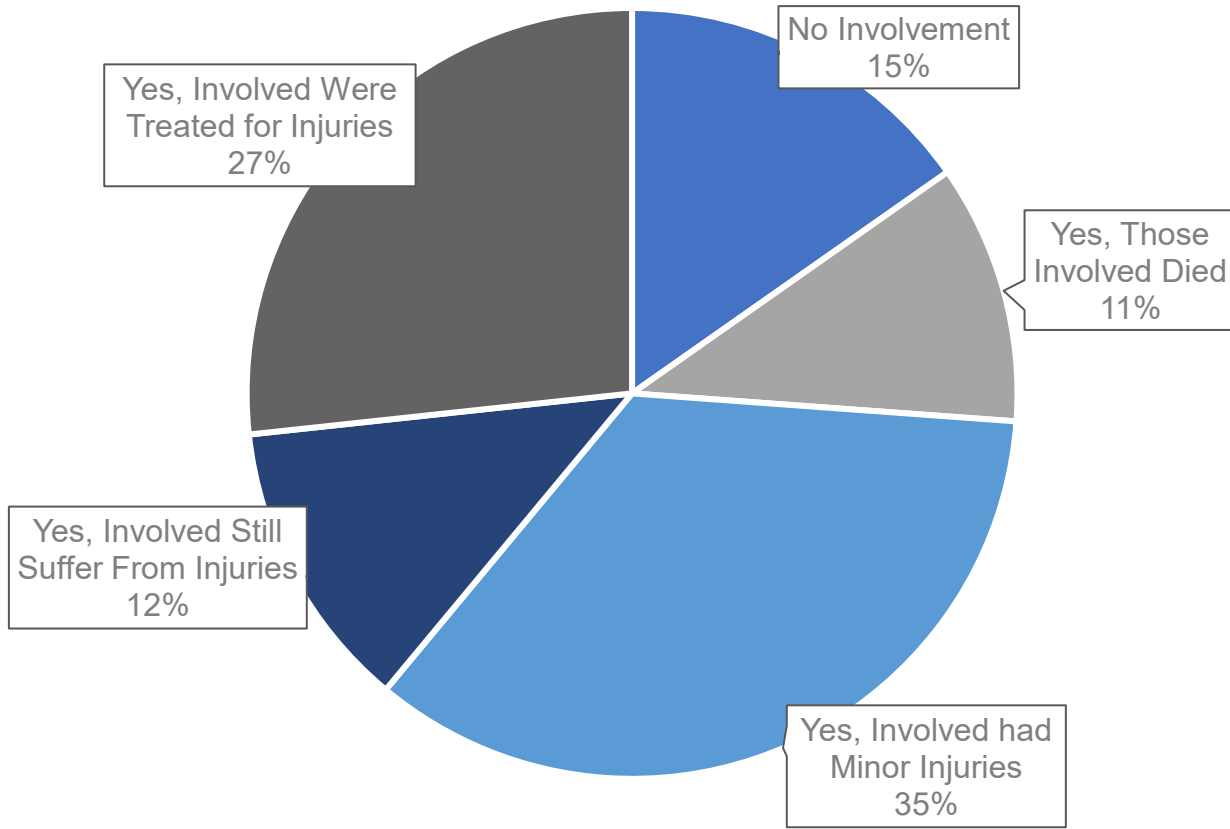
- Launched survey Mon, Feb 5
- Closed on Sun, Feb 19
- Received 278 responses
- Variety of demographics
- 117 open-ended responses
- 70+ emails provided
- Summarizing results

## Respondents Home County



# Public Input Survey

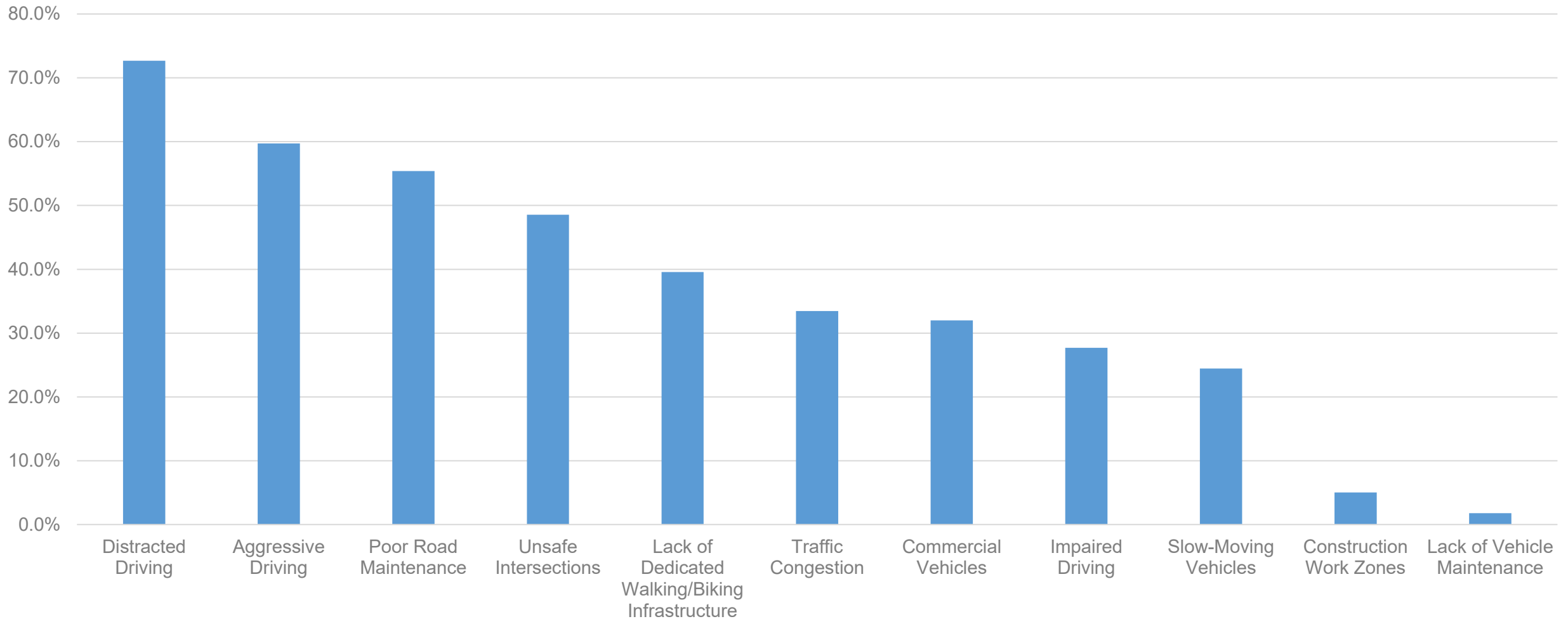
## Crash Involvement





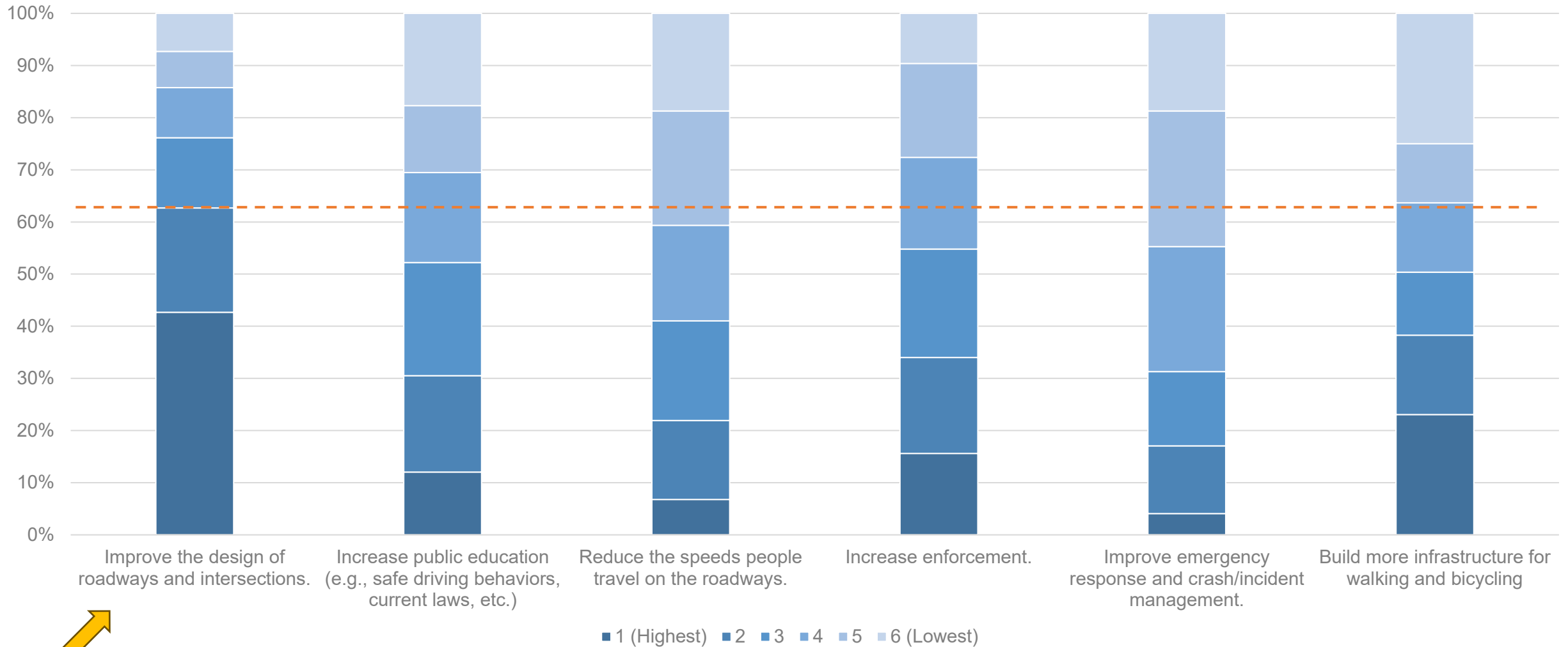
# Public Input Survey

## Biggest Safety Concerns



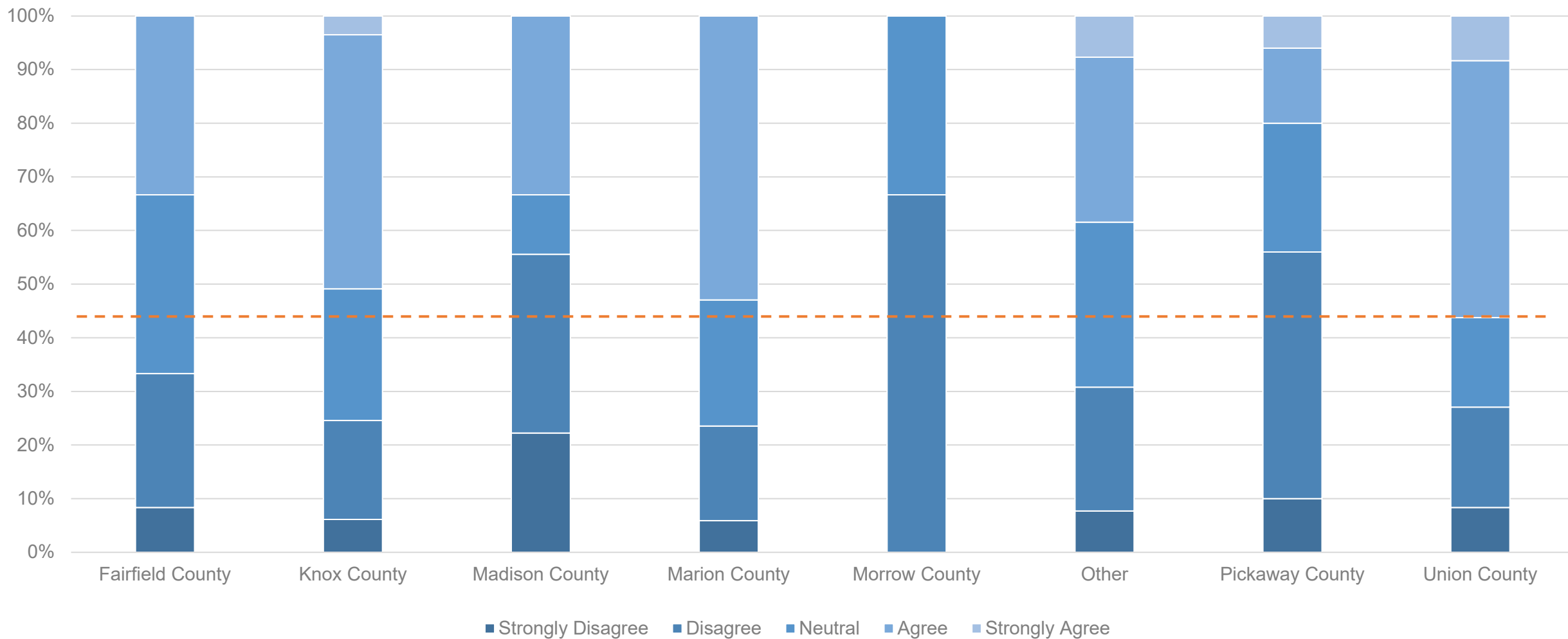
# Public Input Survey

## Safety Strategy Priorities



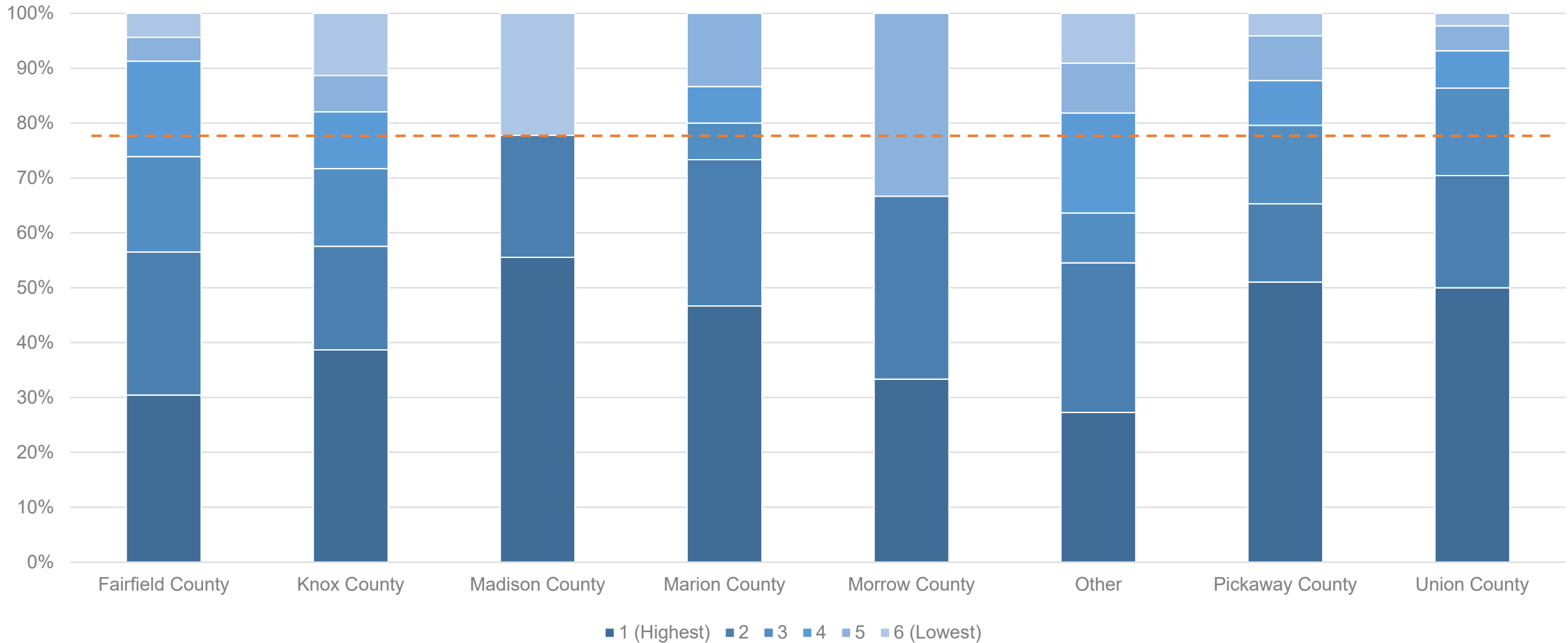
# Public Input Survey

## Respondents Feelings Regarding Roadway Safety by Home County



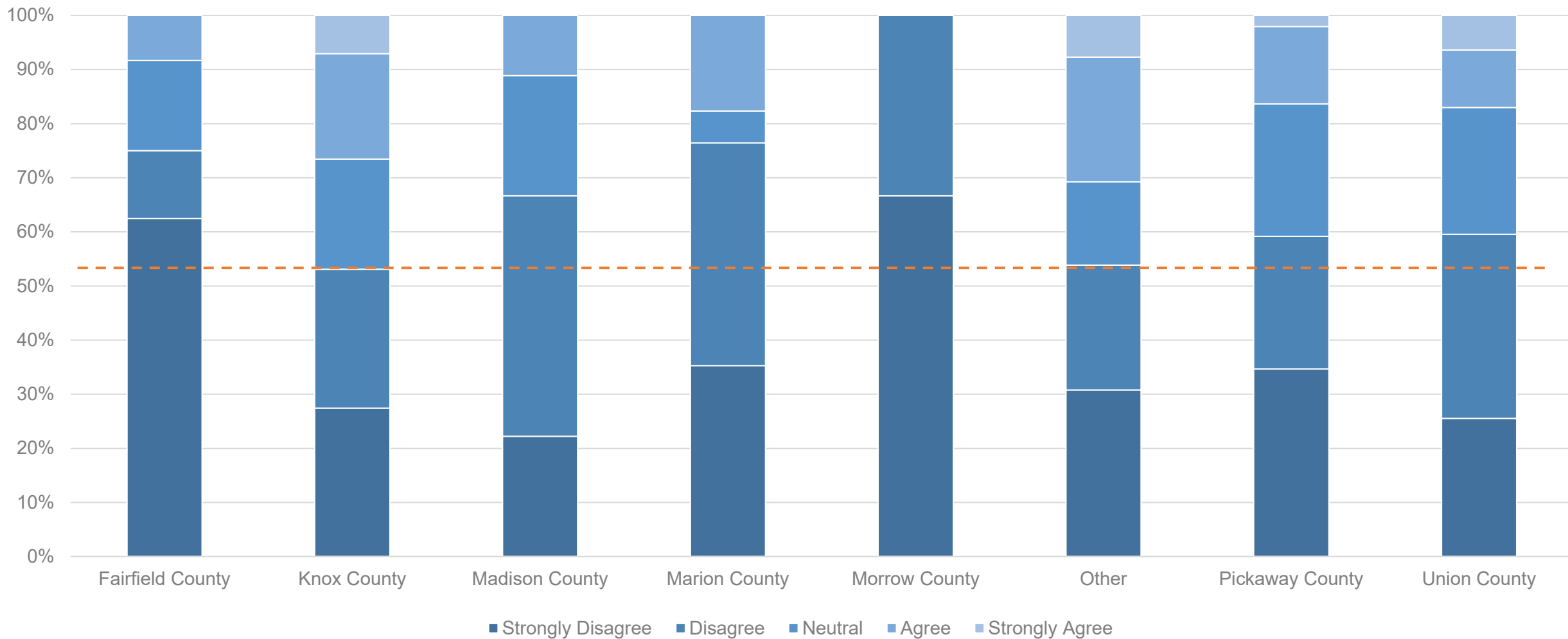
# Public Input Survey

## Priority Rankings: Improve Design of Roadways and Intersections

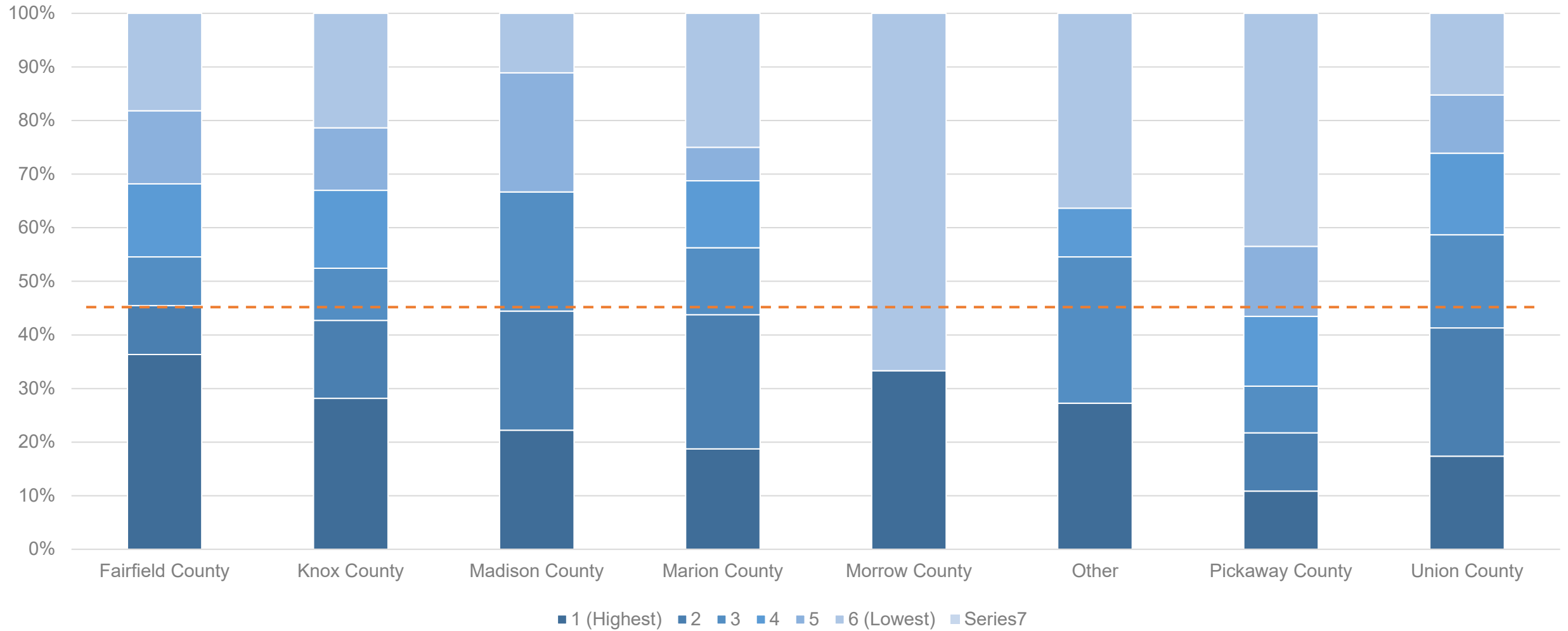


# Public Input Survey

## Sufficiency of Infrastructure for Walking by Home County



## Priority Rankings: Build More Infrastructure for Walking and Bicycling



# SS4A ACTION PLAN DEVELOPMENT

# SS4A Safety Action Plan

## Components for CORPO Plan

### MANDATORY

1. Safety Analysis \*
2. Strategy and Project Selections \*
3. *Completed between 2019 and April 30, 2024 \**

### SECONDARY - RANKED

1. Leadership Commitment and Goal Setting
2. Engagement and Collaboration
3. Planning Structure
4. Policy and Process Changes
5. Equity Considerations
6. Progress and Transparency

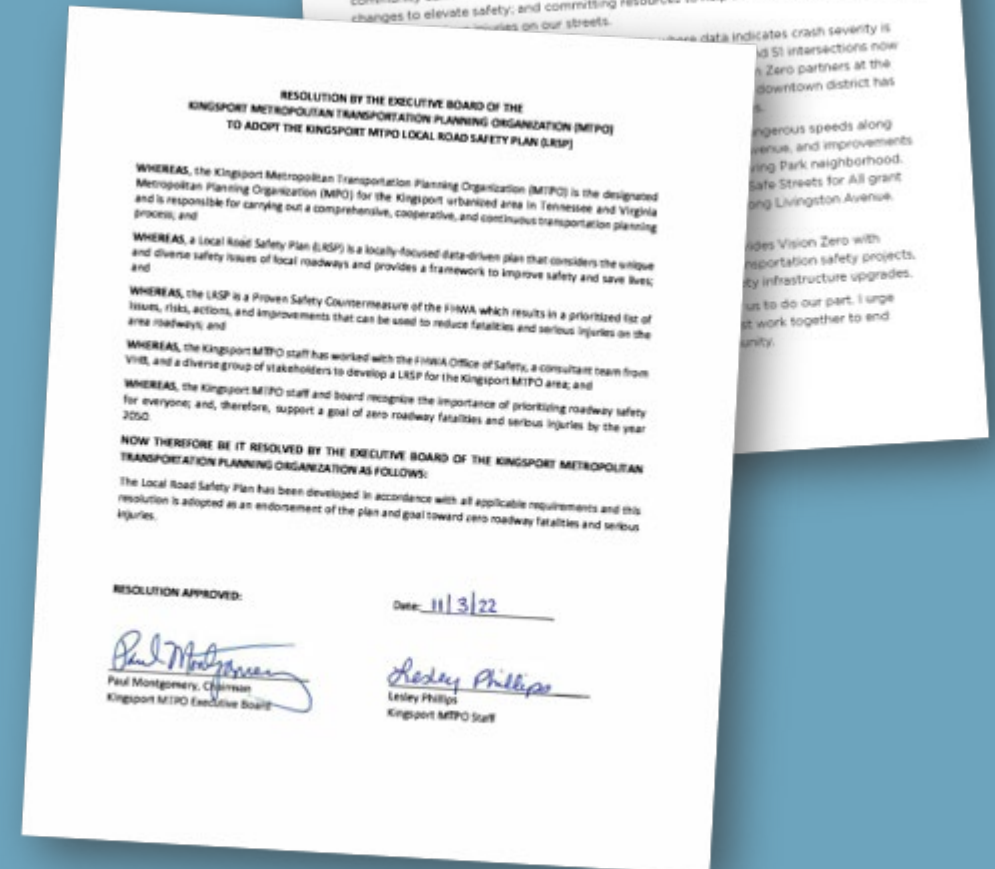
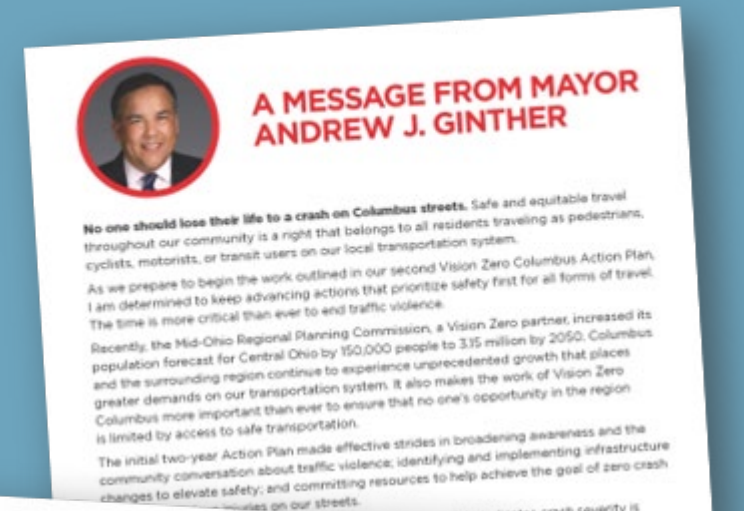


# SS4A Safety Action Plan

## Leadership Commitment and Goal Setting

Are both of the following true?

- Did a high-ranking official and/or governing body publicly **commit to an eventual goal of zero roadway fatalities and serious injuries?**
- Did the commitment include either:  
**Setting a target date to reach zero**  
OR  
**Setting one or more targets to achieve significant declines in roadway fatalities and serious injuries by a specific date?**

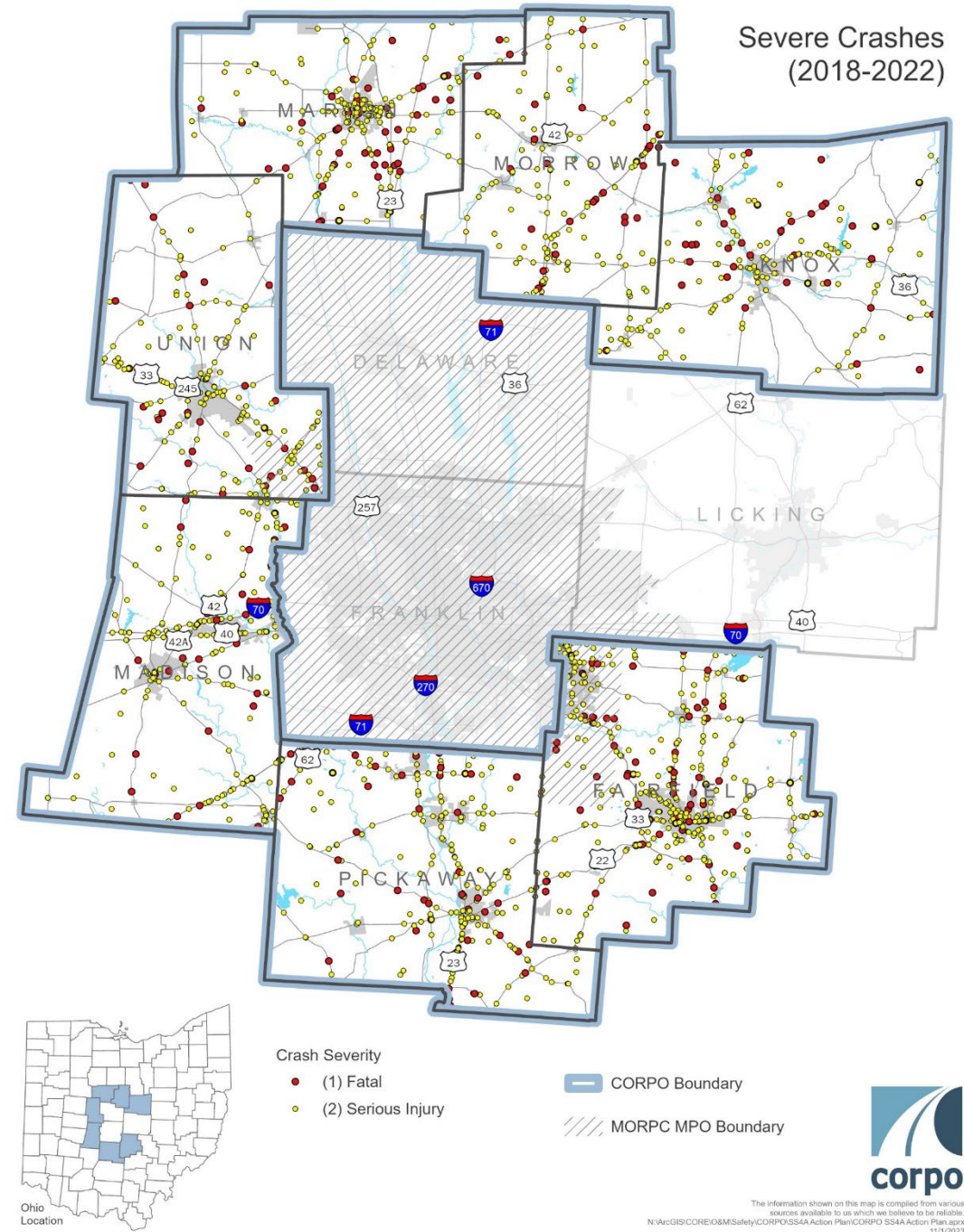


# Action Plan – Goals

## Performance Measures

Metric	CORPO Area
Fatality Rate <i>(Fatalities per 100 MVMT)</i>	<b>1.25</b>
Serious Injury Rate <i>(Serious Injuries per 100 MVMT)</i>	<b>7.32</b>
Total Fatalities	65
Total Serious Injuries	381
Total Non-Motorized Fatalities and Serious Injuries	29

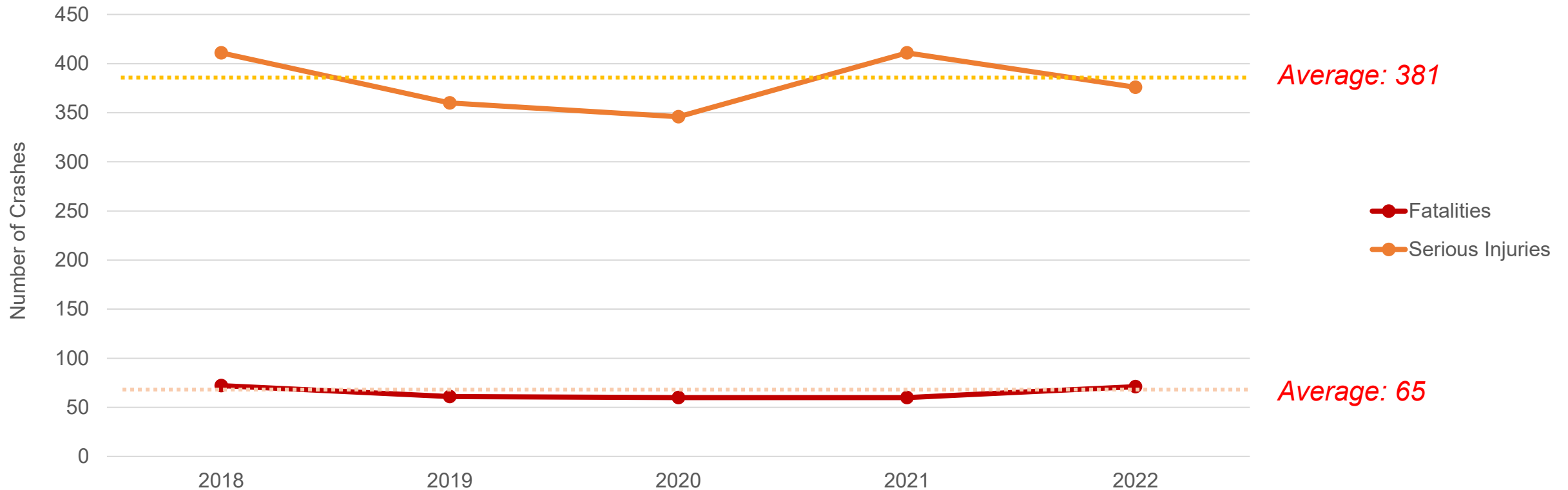
*\*All performance measures are calculated using 5-year rolling averages*



# Action Plan – Goals

## Crash History (2018 – 2022)

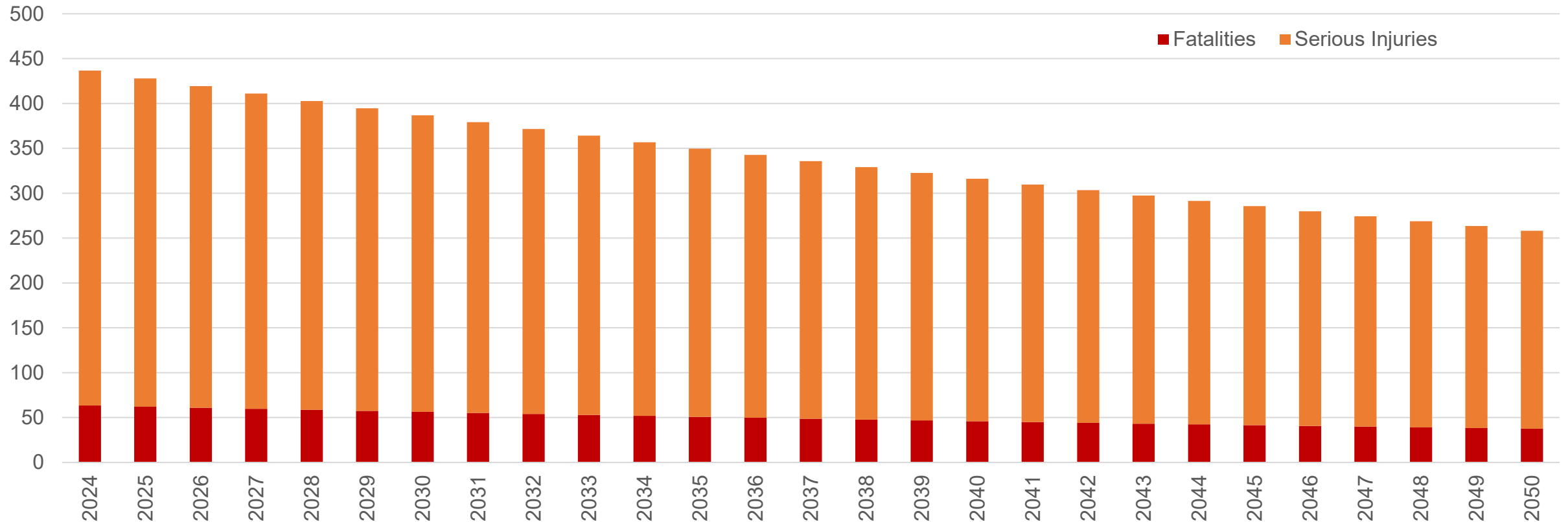
Fatalities and Serious Injuries per Year (2018-2022)



# Action Plan – Goals

## Injury Reduction Estimates

2% Annual Reduction in Fatalities and Serious Injuries



# SS4A Safety Action Plan

## Engagement and Collaboration

Did the Action Plan development include all of the following?

- **Engagement with the public and relevant stakeholders**, including the private sector and community groups;
- **Incorporation of information received** from the engagement and collaboration into the plan; and
- Coordination that included **inter- and intra-governmental cooperation and collaboration**, as appropriate.

### Examples:

- Public Survey
- Stakeholder Workshops

# Action Plan – Engagement

## Send us screenshots or links to your posts!

- Any comments on the posts or other feedback



# SS4A Safety Action Plan

## Strategy and Project Selections\*

Does the plan identify a **comprehensive set of projects and strategies** to address the safety problems in the Action Plan, time ranges when projects and strategies will be deployed, and explain project prioritization criteria?

*Note: This should include one or more lists of community-wide multi-modal and multi-disciplinary projects that respond to safety problems and reflect community input and a description of how your community will prioritize projects in the future.*

If “YES,” please list the relevant document(s) and page number(s) that corroborate your response.

# Action Plan – Strategies

## Draft CORPO Action Plan Strategies

- **Safe Road Users:** Encourage safe and responsible behavior for all road users by providing the services, conditions, education, and enforcement that prioritize their safety.
- **Safe Vehicles:** Explore opportunities for education, research, and deployment of vehicle systems, features, and other technologies that help to prevent and mitigate the severity of crashes.
- **Safe Speeds:** Promote context-appropriate speeds through roadway design, education, and enforcement that prioritizes safety.
- **Safe Roads:** Create a transportation system that encourages safe behavior, accommodates human mistakes, reduces the severity of crashes, and facilitates safe travel for all road users.
- **Post-Crash Care:** Enhance the survivability of crashes by improving incident response systems as well as management practices that help to prevent secondary crashes.
- **Safe System:** Collaborate across the SSA elements to identify and implement solutions that will reduce fatalities and serious injuries throughout Central Ohio.





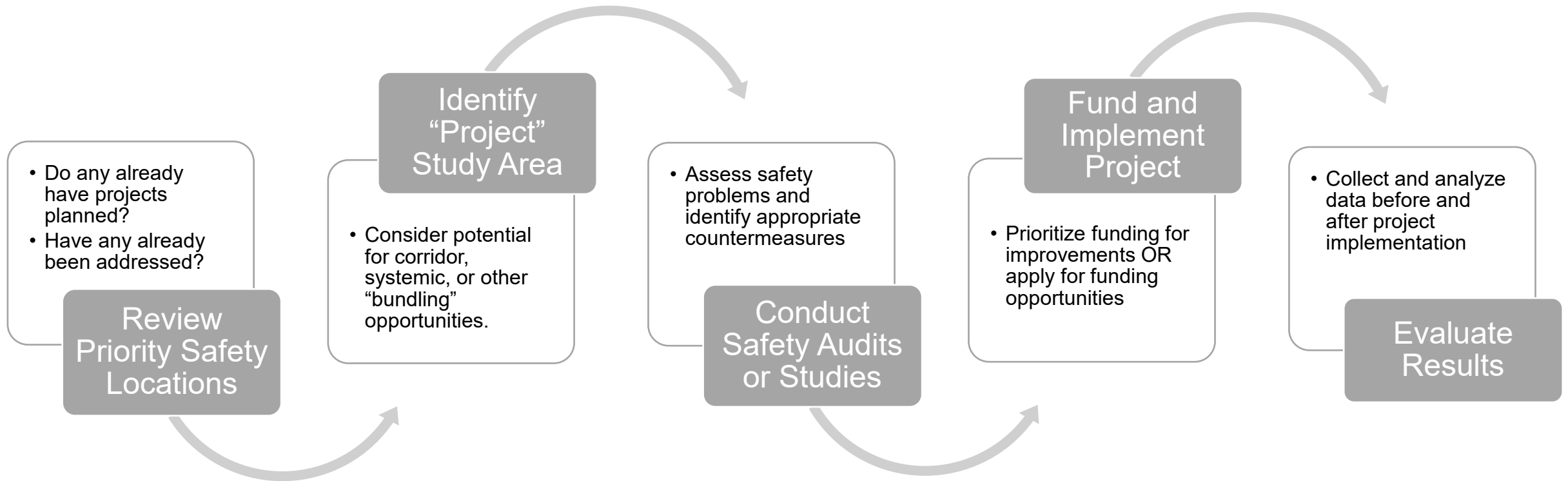
# Action Plan – Action Items

## Sample Action Items

*Safe Roads: Create a transportation system that encourages safe behavior, accommodates human mistakes, reduces the severity of crashes, and facilitates safe travel for all road users.*

Action Item	Progress Measure	Timeframe	Lead Agency(ies)	Partners
Conduct Road Safety Audits at priority safety locations to identify proven safety countermeasures for implementation.	Number of Road Safety Audits Conducted Annually	Short-term	CORPO/MORPC, ODOT, County and City Engineers	County Health Departments, Safe Communities Coalitions
Identify opportunities to incorporate proven safety countermeasures into standard roadway maintenance procedures.	Number of Maintenance Projects Incorporating PSCs Annually	Mid-term	Local Agencies	
Implement low-cost, quick-build safety improvements at strategic priority safety locations to pilot solutions for permanent construction.	Number of Locations Piloted Annually	Mid-term	CORPO/MORPC, County and City Engineers	ODOT
Pursue funding opportunities to implement safety projects at priority safety locations.	Number of Funding Applications Submitted	Short-term	CORPO/MORPC, County and City Engineers	ODOT

# Action Plan – Project Development



# Action Plan – Project Development

Federal Highway Administration

## Proven Safety Countermeasures in Rural Communities



### 1 Roadway Departure



Figure 3. Wider edge lines enhance visibility of the travel lane. Source: Thurston County, WA

### Wider Edge Lines

Rural Applications/Considerations Wider edge lines (6 inches, per MUTCD) are commonly installed on rural two-lane highways, particularly those with departure crashes. Wider edge lines are a low-cost countermeasure. The use of quality retroreflective material may increase the life of the marking. Installing rumble stripes can improve marking longevity and visibility.

#### Effectiveness of Widening Edge Lines (from 4 to 6 inches)

• 37% reduction in fatal and injury crashes on rural two-lane roads

#### Case Studies

- Missouri undertook a major road surface improvement program in 2005-06. Pre- and post-installation crash data. The analysis revealed a 22% reduction in crashes from installing wider edge line markings as a standalone treatment. <https://www.mdot.gov/sites/cm/CORDT/cmr12-002.pdf>
- Idaho evaluated the safety effects of using wider edge line markings on rural roads. Results indicated a benefit-to-cost ratio of 25:1. <https://rosap.nhtl.bts.gov/handle/document/4382>

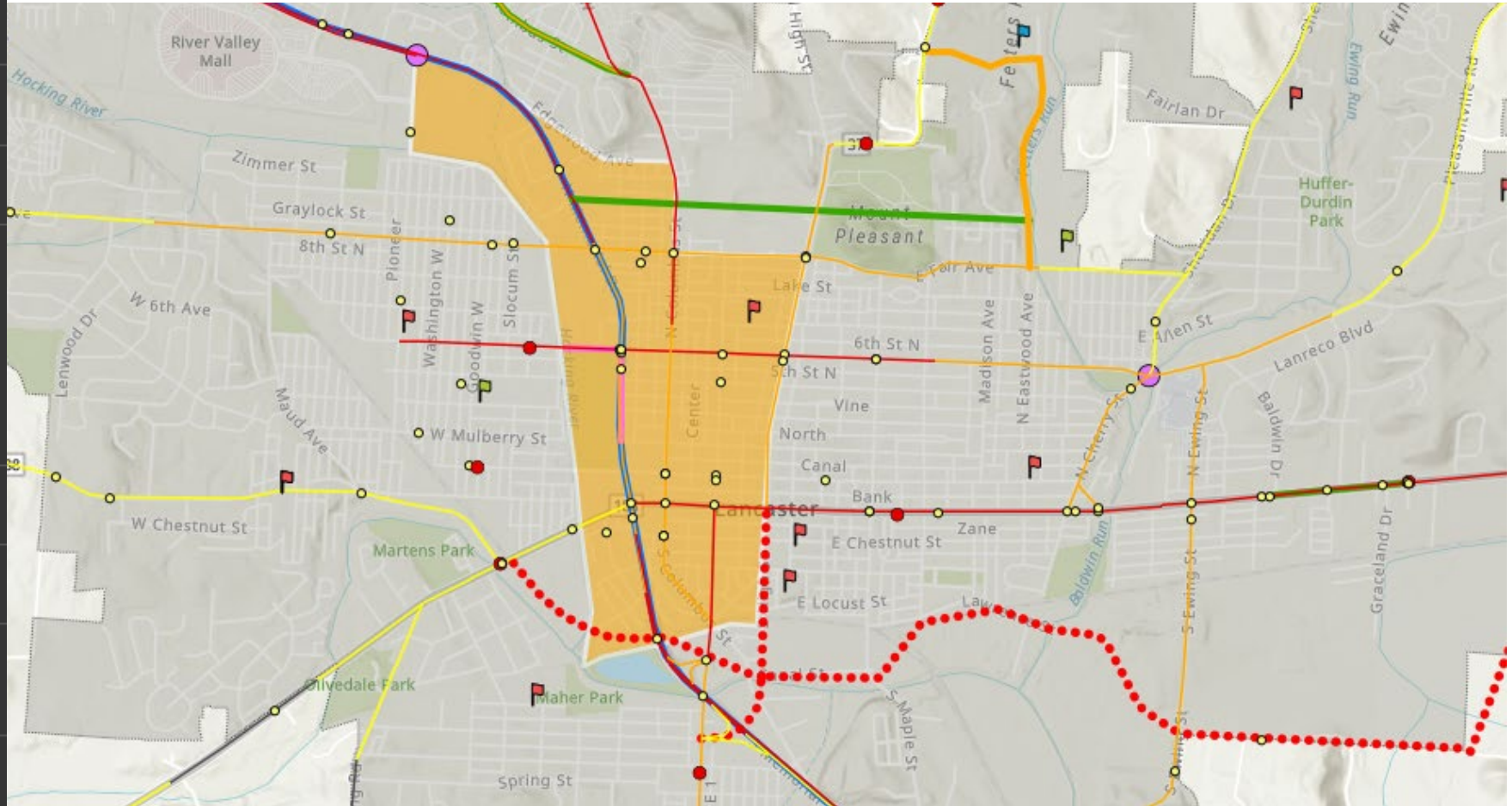
### Reference Areas

- 1 Focus Area
- 2 Rural Applications/Considerations
- 3 Crash Reduction Effectiveness
- 4 Case Studies
- 5 QR Code to PSC Webpage

# Action Plan – Project Development

## Interactive, Online Reference Map

- Schools
- Severe Crashes 2018-2022
- Severe Non-Motorized Crashes
- Severe Crashes Heat Map
- ▼ ODOT HSIP Systemic Safety Priorities
  - Pedestrian Safety Priority Corridors
  - Roadway Departure Priority Corridors
- CTP Intersection Projects
- CTP Corridor Projects
- USDOT Transportation Disadvantaged Communities April 2022
- Justice40 Tracts November 2022 Version 1.0



# Action Plan – Stakeholder Input

## Miro Board Homework

- Review the strategies and action items
- Use sticky notes and dots to provide comments and feedback
- Comment on each field:
  - Edits to action items
  - Suggestions for new action items
  - Potential ways to measure progress
  - Feasible timeframe for launching action item
  - Ideal lead agency/agencies
  - Potential partners to engage

Safe System Elements	Strategy
Safe Road Users	Encourage safe and responsible behavior for all road users by providing the services, conditions, education, and enforcement that prioritize their safety.
Safe Vehicles	Explore opportunities for education, research, and deployment of vehicle systems, features, and other technologies that help to prevent and mitigate the severity of crashes.
Safe Speeds	Promote context-appropriate speeds through roadway design, education, and enforcement that prioritizes safety.
Safe Roads	Create a transportation system that encourages safe behavior, accommodates human mistakes, reduces the severity of crashes, and facilitates safe travel for all road users.
Post-Crash Care	Enhance the survivability of crashes by improving incident response systems as well as management practices that help to prevent secondary crashes.
Safe System	Collaborate across the SSA elements to identify and implement solutions that will reduce fatalities and serious injuries throughout Central Ohio.

Action Item	Progress Measure	Timeframe	Lead Agency(ies)	Partners
Establish commitments to reach the goal of zero fatalities and serious injuries in local CORPO jurisdictions.	Number of Resolutions Adopted in Local Communities	Mid-term	CORPO/MORPC	
Collect new and improve existing data needed to conduct relevant safety analyses.		Mid-term	CORPO/MORPC	ODOT, ODPS
Collaborate with partners to identify new opportunities for implementing innovative approaches to mitigating severe crashes.	Grant Applications or Projects Initiated	Mid-term	CORPO/MORPC	ODOT, ODPS, OSU, Public Health Departments

Send feedback

Try to use a sticky note color that corresponds to the relevant field in the chart.

- Action Item
- Progress Measure

# **SAFETY ACTION PLAN DELIVERABLE**

# Safety Action Plan – Outline

- **Introduction**

- Leadership Commitment & Goal Setting
- CORPO Background
- National Roadway Safety Strategy and Safe System Approach
- Plan Development and Content
- Stakeholder and Public Engagement

- **Current Conditions**

- Crash Data Overview
- Recent Planning Efforts

- **Regional Safety Priorities**

- Safety Analysis & High Injury Network
- Equity Considerations
- County Emphasis Areas

- **Strategies and Action Items**

- Safe System Elements

- **Implementation & Monitoring**

- Guide to Implementation
- Collaboration and Partnerships
- Funding
- Evaluating and Tracking Success

## Appendices

- Action Plan
- Stakeholder & Public Input
- Detailed Technical Analyses

# Safety Action Plan – Format Ideas

## Pedestrian Collisions on Peel Regional Roads

This dashboard shows where all pedestrian collisions occur on Peel Regional Roads. The data will update as you zoom in and out of the map.

### Map Functions

- Search for an address
- Reset the view
- View legend
- Turn layers on and off
- Change the base map

You can filter the data by year, time of day, or both by clicking on the graph. The map will update based on selection.

If you have any questions or feedback regarding the information provided in this application, please [Contact Us](#). Visit the [web page](#) for more information on Vision Zero.

Disclaimer: The information displayed on this map has been compiled from various sources. While every effort has been made to accurately depict the information, this map should not be relied on as being a precise indicator of locations.

### Classification of Collision

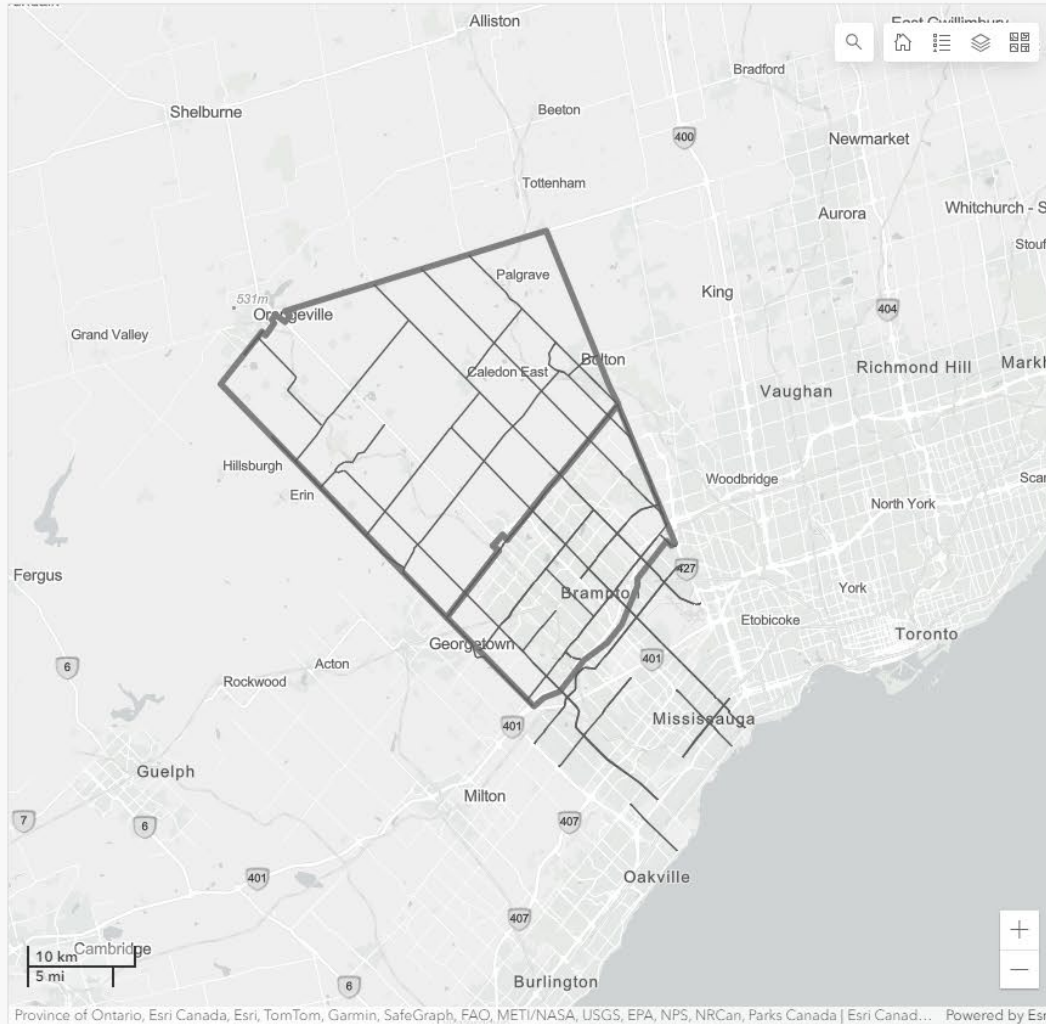
All

### Select a Regional Road

All



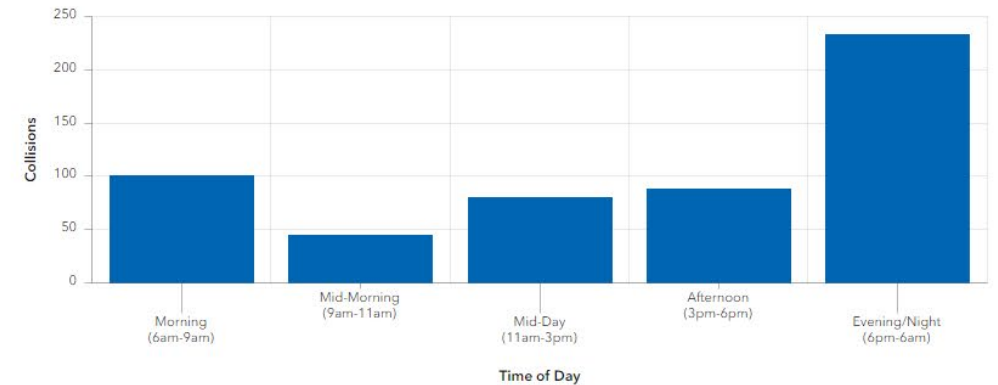
**VISIONZERO**  
Peel



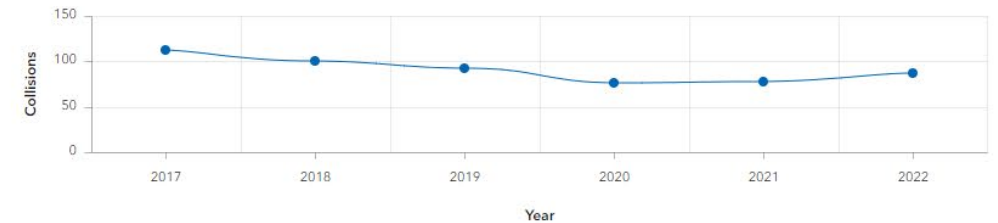
### Pedestrian Collisions (2017-2022)



### Pedestrian Collisions During the Day

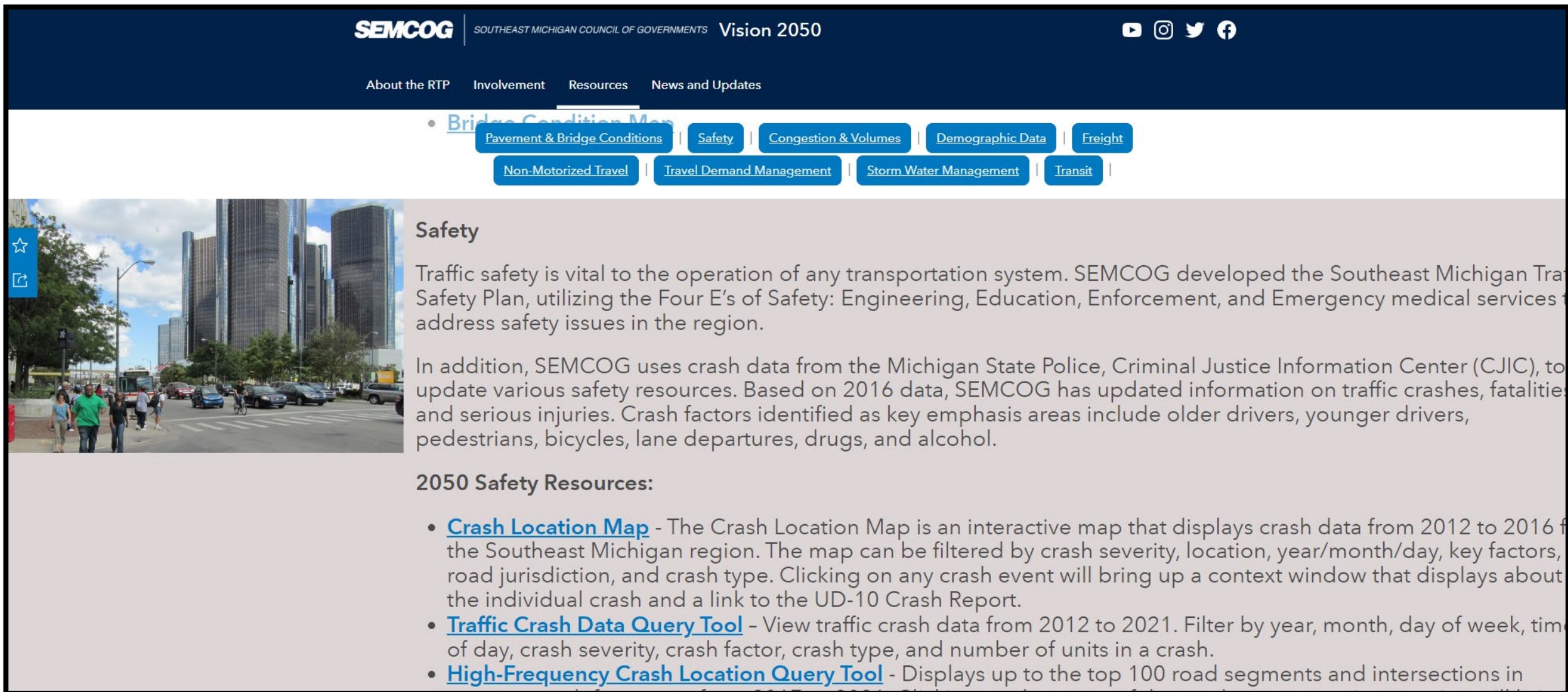


### Pedestrian Collisions by Year





# Safety Action Plan – Format Ideas



The screenshot shows the SEMCOG website header with the logo and 'Vision 2050'. The navigation menu includes 'About the RTP', 'Involvement', 'Resources', and 'News and Updates'. A secondary menu lists various transportation topics, with 'Safety' highlighted. The main content area features a photograph of a city street and a 'Safety' section. The text explains the importance of traffic safety and SEMCOG's approach using the Four E's of Safety. It also mentions the use of crash data from the Michigan State Police. A list of '2050 Safety Resources' includes links to a Crash Location Map, a Traffic Crash Data Query Tool, and a High-Frequency Crash Location Query Tool.

**SEMCOG** | SOUTHEAST MICHIGAN COUNCIL OF GOVERNMENTS Vision 2050

About the RTP | Involvement | Resources | News and Updates

- [Bridges Condition Map](#)
- [Pavement & Bridge Conditions](#) | [Safety](#) | [Congestion & Volumes](#) | [Demographic Data](#) | [Freight](#)
- [Non-Motorized Travel](#) | [Travel Demand Management](#) | [Storm Water Management](#) | [Transit](#)

## Safety

Traffic safety is vital to the operation of any transportation system. SEMCOG developed the Southeast Michigan Traffic Safety Plan, utilizing the Four E's of Safety: Engineering, Education, Enforcement, and Emergency medical services to address safety issues in the region.

In addition, SEMCOG uses crash data from the Michigan State Police, Criminal Justice Information Center (CJIC), to update various safety resources. Based on 2016 data, SEMCOG has updated information on traffic crashes, fatalities, and serious injuries. Crash factors identified as key emphasis areas include older drivers, younger drivers, pedestrians, bicycles, lane departures, drugs, and alcohol.

### 2050 Safety Resources:

- [Crash Location Map](#) - The Crash Location Map is an interactive map that displays crash data from 2012 to 2016 for the Southeast Michigan region. The map can be filtered by crash severity, location, year/month/day, key factors, road jurisdiction, and crash type. Clicking on any crash event will bring up a context window that displays about the individual crash and a link to the UD-10 Crash Report.
- [Traffic Crash Data Query Tool](#) - View traffic crash data from 2012 to 2021. Filter by year, month, day of week, time of day, crash severity, crash factor, crash type, and number of units in a crash.
- [High-Frequency Crash Location Query Tool](#) - Displays up to the top 100 road segments and intersections in



Join by Web [PollEv.com/laurenc265](https://PollEv.com/laurenc265) Join by Text Send **laurenc265** to **22333**



### Do you have a preference on the format of the final Safety Action Plan deliverable?

(A) Yes! I love the online, interactive dashboard format.



(B) Yes - I'm okay with an online format, but also want a printable v...



# Next Steps

- **Provide Additional Feedback**
- **Develop Full Draft of Safety Plan**
- **Public Comment Period on Draft**
  - *(tentative) March 11 – April 12*
  - Collect Feedback on Draft Document/Site
- **CORPO Subcommittee Meetings**
  - March 18 – 28
  - Collect Feedback on Draft Document/Site
- ***(Tentative) Stakeholder Meeting #5***
  - *Wednesday, April 17 from 2:30 – 4:00 PM*
  - *Review Feedback and Discuss Changes*

# Action Plan Timeline



SCOPE TASKS	SEP	OCT	NOV	DEC	JAN	FEB	MAR	APR	MAY	JUN
Project Administration			M1							
Existing Conditions Analysis				M2						
Safety Action Plan Development					M3	M4		M5?		
Public Input Survey										
Public Comment on Draft Plan						D	D			
Final Action Plan								D		
<i>CORPO Subcommittee Meetings</i>	M						M*	M*		
<i>CORPO Committee Meetings</i>			M						M*	
<i>Action Plan Adoption</i>									^	
<i>FY24 SS4A Implementation</i>						**		(4)	16	



When poll is active respond at [PollEv.com/laurenc265](https://PollEv.com/laurenc265)



Do you have any other thoughts you would like to share?

Nobody has responded yet.

Hang tight! Responses are coming in.

# THANK YOU!

## LAUREN CARDONI

*Active Transportation and Safety Program Manager*

T: 614.233.4128

[lcardon@morpc.org](mailto:lcardon@morpc.org)

## MARY TURNER

*Senior Planner*

T: 614.233.4138

[mturner@morpc.org](mailto:mturner@morpc.org)

