

I. Existing At-Grade Crossing



I.1 - Aerial view of existing at-grade crossing (513244C) looking north.



I.2 - Aerial view of existing at-grade crossing (513244C) looking east.



I.3 - Aerial view of existing at-grade crossing (513244C) looking south.



I.4 - Aerial view of existing at-grade crossing (513244C) looking west.

II. Proposed Separated Crossing Location



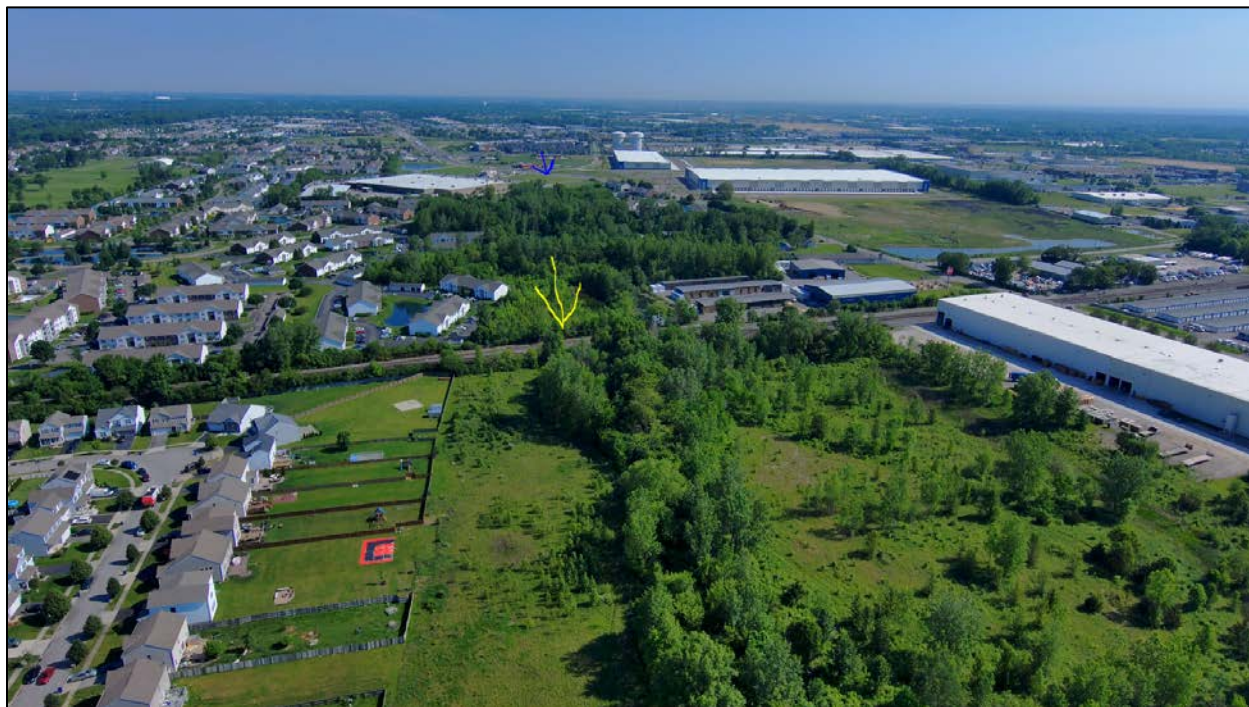
II.1 - Aerial view of looking south from Summerlin Way towards Galloway Road's current terminus (red arrow). The proposed roadway extension and separated crossing would start from the arrow and extend towards the bottom right of the picture.



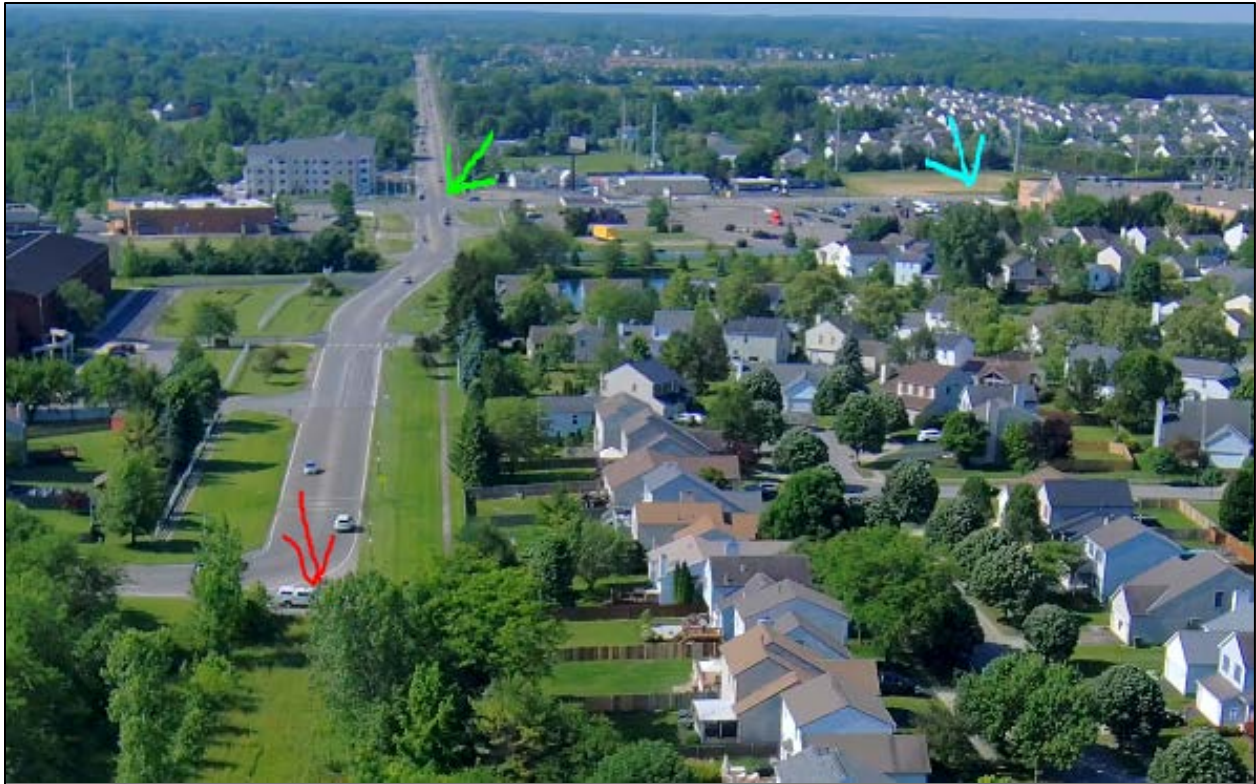
II.2 - Aerial view of looking south towards Galloway Road's current terminus (red arrow), also showing approximate area (yellow arrow) roadway bridge would pass over railroad corridor.



II.3 - Aerial view of looking north from Galloway Road's current terminus (red arrow) towards approximate area (yellow arrow) roadway bridge would pass over railroad corridor.



II.4 - Aerial view of looking north from Galloway Road's current terminus (red arrow) towards approximate area (yellow arrow) roadway bridge would pass over railroad corridor and then north to the point where Galloway Road would tie back into Hilliard Rome Road (blue arrow).



II.5 - Aerial view of looking south from Galloway Road’s current terminus (red arrow) towards Broad Street (green arrow) and proposed terminus station for the in design LinkUS West Broad Street Bus Rapid Transit (BRT) corridor. This section would be improved as needed to provide a consistent roadway section (including bike/ped facilities and lighting) as the separated crossing and extension of Galloway Road.