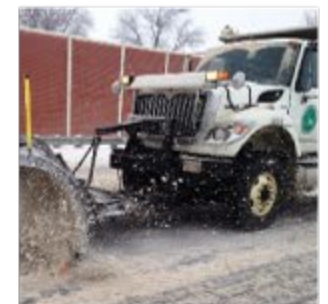
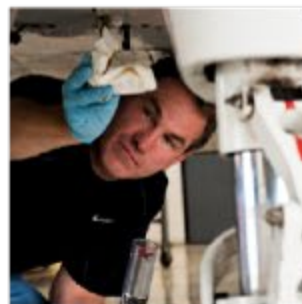


DISTRICT 6 PROJECTS OVERVIEW - 2024



Michele Risko, Local Programs Manager
Thom Slack, Capital Programs Administrator



Department of
Transportation

I-70/I-71 DOWNTOWN RAMP UP

- Series of projects to reconstruct Interstates 70/71 in downtown Columbus and alleviate the biggest safety and congestion problems along the corridor.



I-70/I-71 DOWNTOWN RAMP UP

Current Project: 4R/6R

- Construct a new eastbound ramp from I-70/71 to Fulton Ave.
- New flyover ramp from Mound St. to I-71 south



I-70/71 DOWNTOWN RAMP UP

Current Project: 4A

- Reconstruct I-70 east from I-71 to High St. and I-70 west from Front St. to Grant Ave.
- Replaces High St. 3rd St. and 4th St. bridges



I-70/71 DOWNTOWN RAMP UP

Traffic Impacts

- Mound St. between 2nd St. and Civic Center Dr. is closed through Fall 2024
- Civic Center Dr. is closed through Fall 2024
- Front Street Closed through Summer/Fall 2025



FAR EAST FREEWAY

Current Project: I-70/I-270
and Brice Rd. eastbound

- Construct new flyover ramp from I-270 south to I-70 east
- Eliminate weave along I-70 east at Brice Rd. exit



FAR EAST FREEWAY

Upcoming Phase: Brice Rd.
and I-70 westbound

- Reconstruct I-70 westbound ramp to I-270 northbound
- Add westbound ramp lanes on I-70 from Brice Rd. to I-270



STATE ROUTE 161 WIDENING

- Widen SR 161 from I-270 to U.S. 62 to three lanes in each direction using existing right of way



STATE ROUTE 161 WIDENING

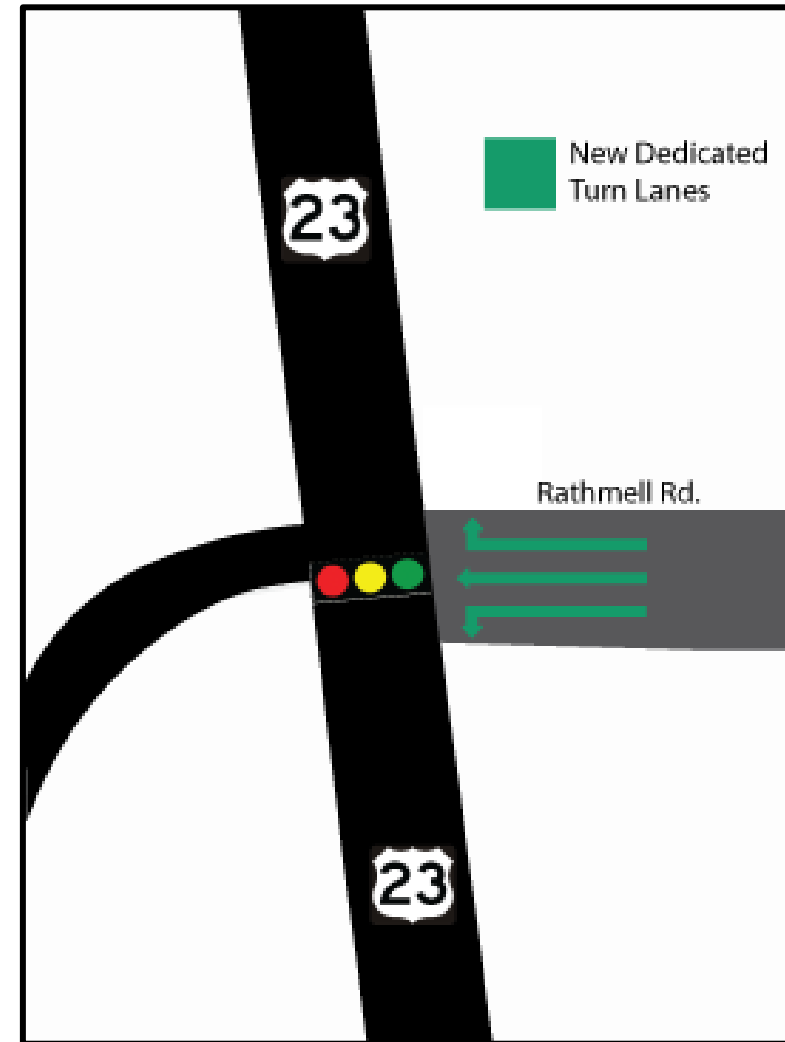
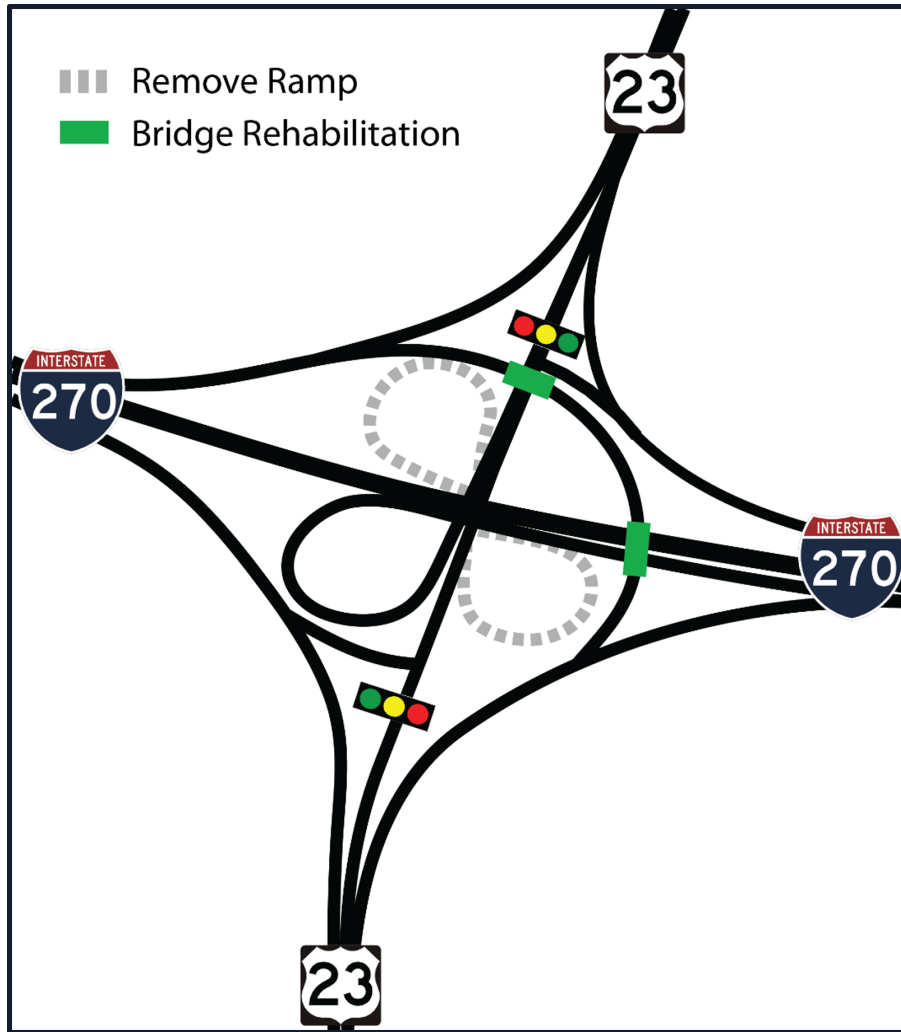


I-270/U.S. 23/RATHMELL ROAD

- Reconfigure the U.S. 23 and I-270 interchange on the south side
- Eliminates two loop ramps
- Adds a third lane on U.S. 23 north from Rathmell Rd. to I-270



I-270/U.S. 23/RATHMELL ROAD

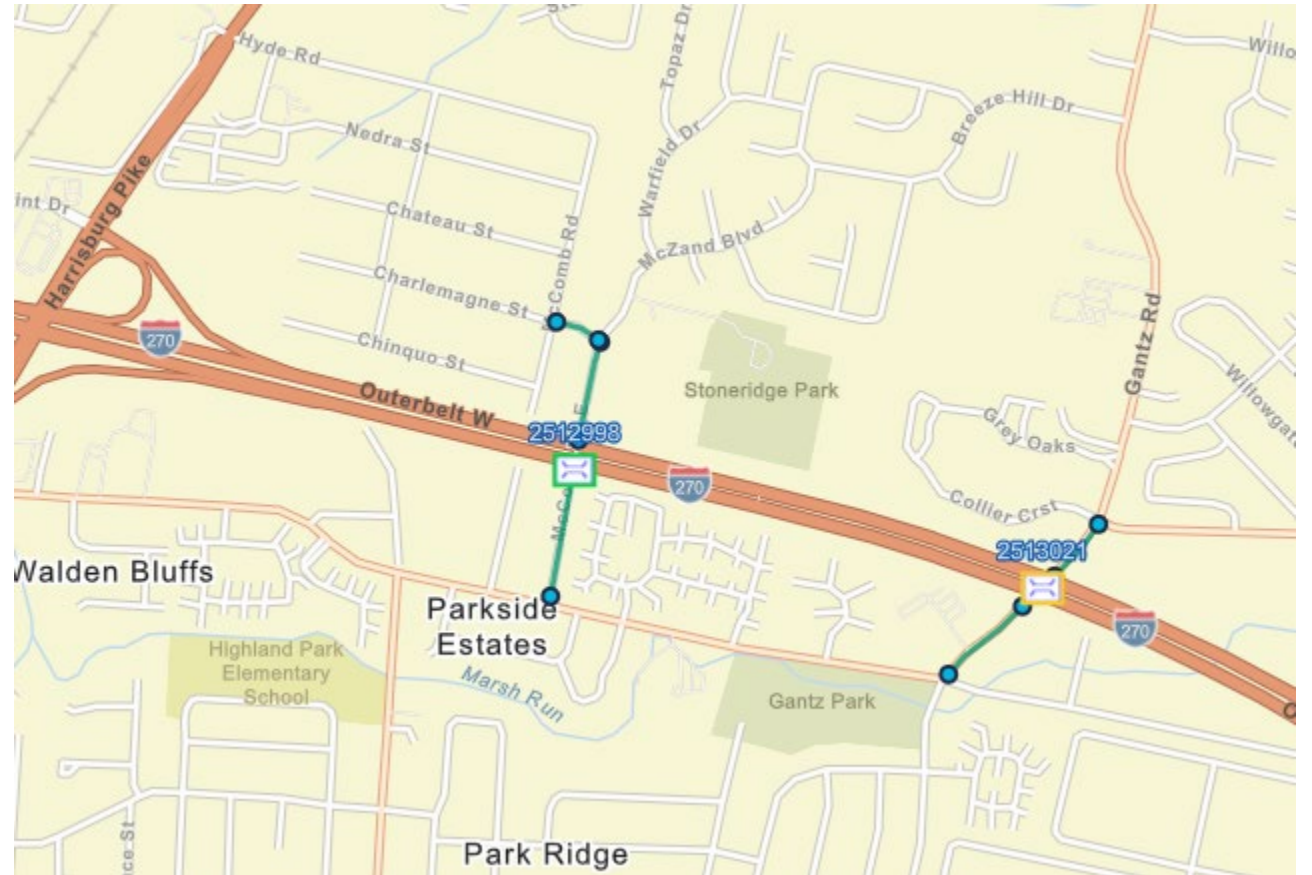


COURTRIGHT RD BRIDGE



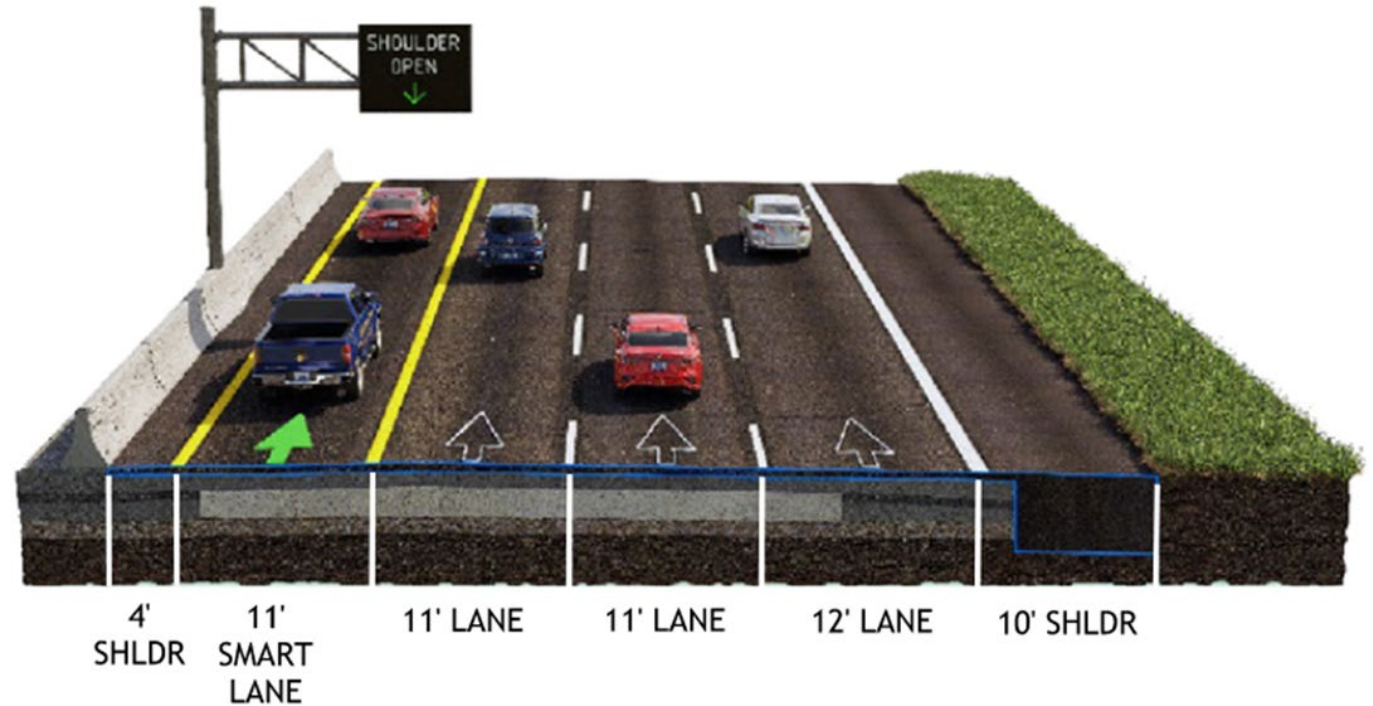
GANTZ ROAD AND MCCOMB ROAD OVERPASSES

- Replace bridge deck on Gantz Rd. and McComb Rd. over I-270.
- Project will construct a shared use path on each overpass.



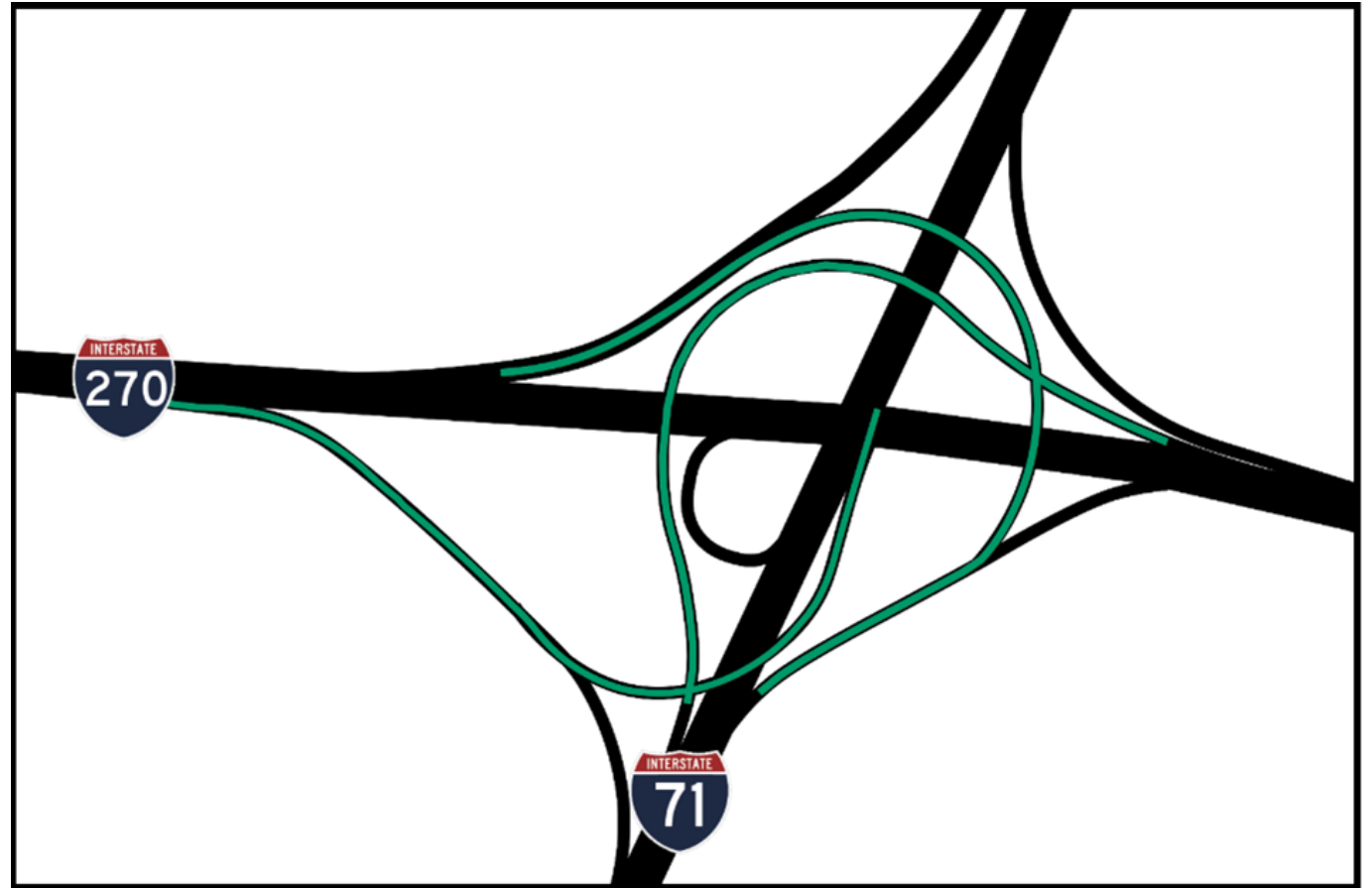
I-71 SMARTLANE

- Convert inside shoulder of I-71 NB and SB between I-670 and I-270 into a SmartLane
- Resurface 10 miles of I-71
- Replace and widen Morse Rd. bridge
- Replace SR 161 bridge



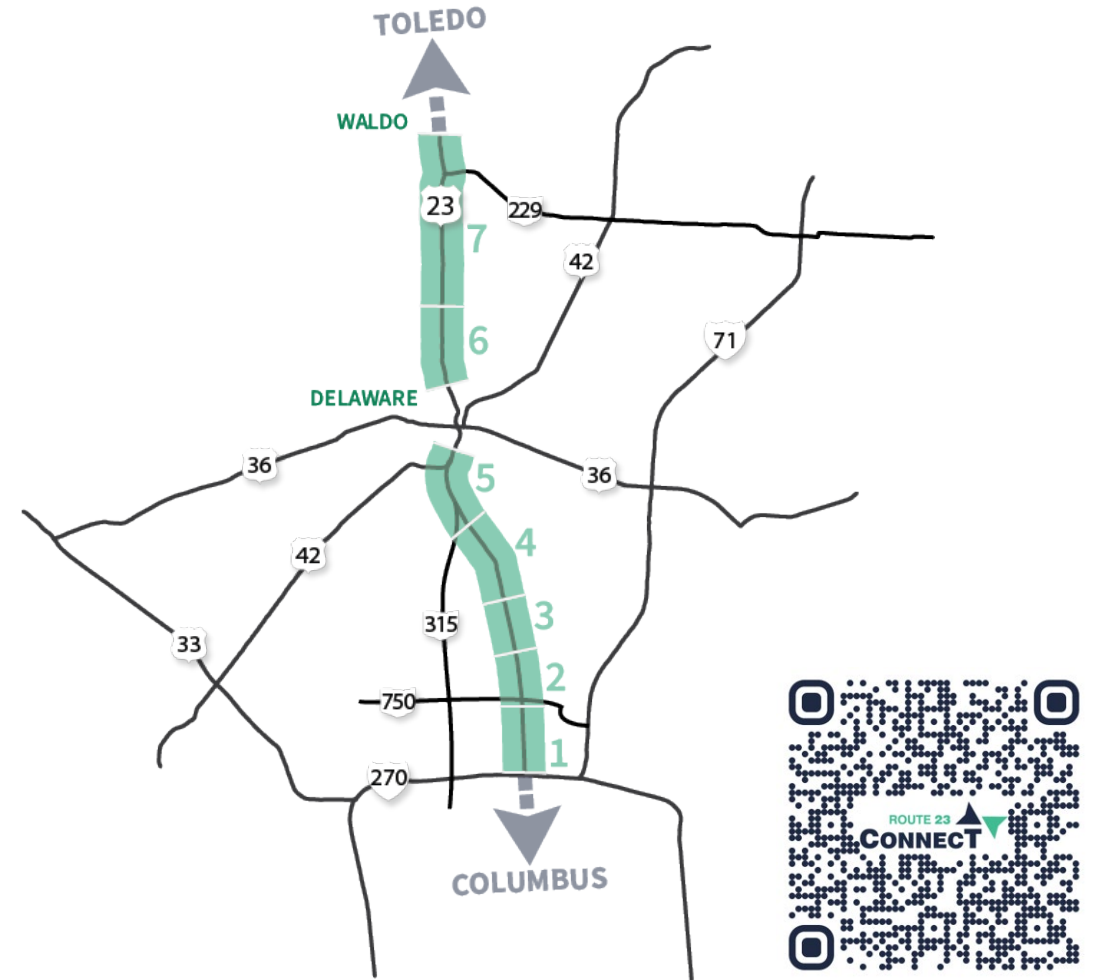
I-71/I-270 INTERCHANGE (NORTH SIDE)

- Widen the I-270 eastbound ramp to I-71 northbound to two lanes
- Construct an additional lane on I-71 northbound between I-270 and Park Rd.
- Construction anticipated in 2025



ROUTE 23 CONNECT

- Plan for improvements to the U.S. 23 corridor between I-270 and Waldo, aiming to provide safer and more efficient travel.
- Inform a future action plan that identifies specific projects that can be advanced into project development.





**Department of
Transportation**

transportation.ohio.gov

TRANSPORTATION.OHIO.GOV/TRAFFICADVISORIES