

A paved path leads through a forest with trees in autumn foliage. The path is flanked by a wooden fence and leads towards a grassy area in the distance. The trees are mostly bare, with some yellow and orange leaves remaining. The sky is blue with some light clouds.

Orange Township 2024 Active Transportation Plan



Plan Elements

- *Vision & goals*
- *Engagement efforts*
- *Existing network analyses*
- *Active transportation network recommendations*
- *Priority projects*
- *Policy & program recommendations*
- *Implementation*

Vision & goals

Vision Statement

The vision of the Orange Township Active Transportation Plan is a collaboration with local government, residents, businesses, groups, and organizations to create a safe, accessible, and well-connected active mobility network for users of all ages and abilities. This Plan encourages healthy lifestyles, equitable transportation, environmental sustainability, and community development by enhancing pedestrian and bicycle systems.



Goals



Engagement Efforts

Engagement Activities

- Steering Committee meetings
- Online survey
- Community pop-up
- Web map survey

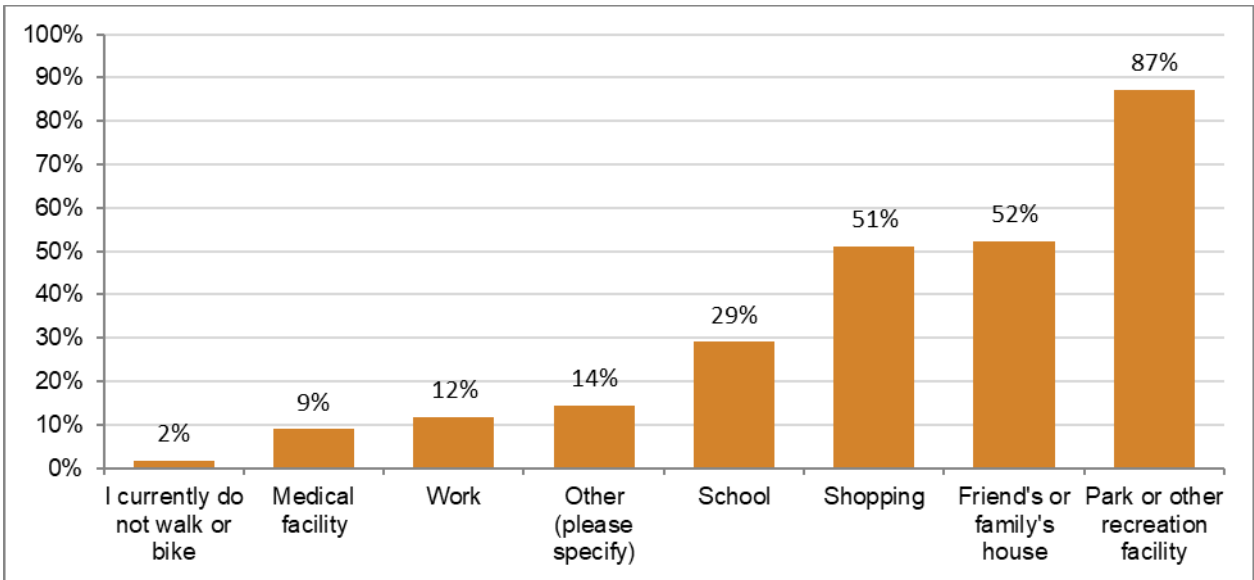


Figure 9. Places People Want to Go on Bike or Foot

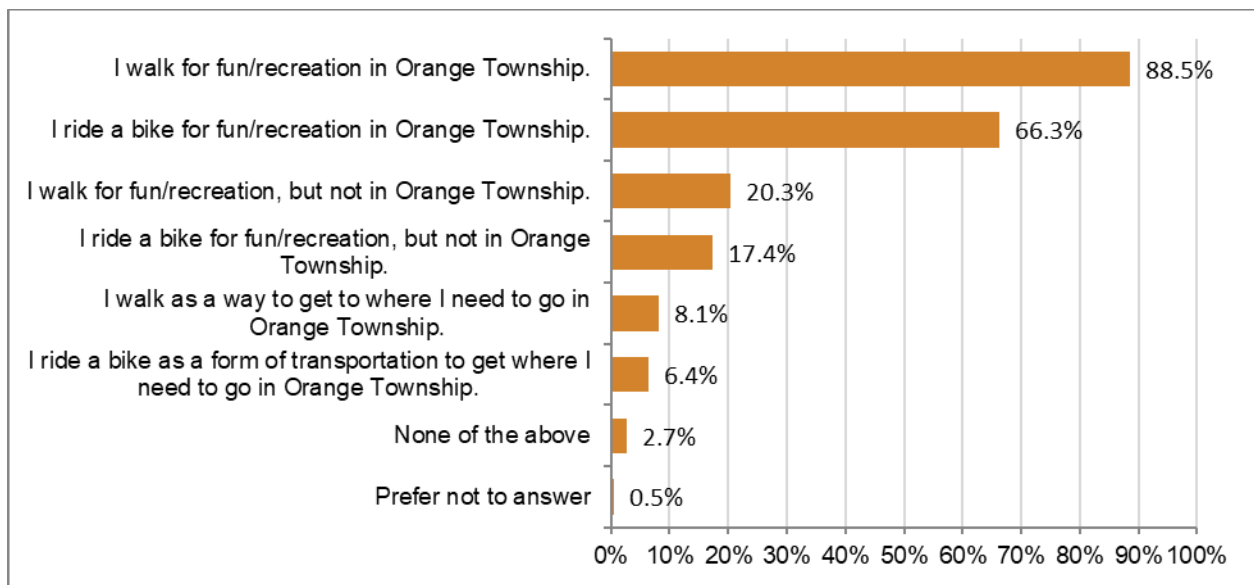


Figure 10. Why and Where People Walk or Bike

A second survey, this time in web map format, was developed to gather input about the draft infrastructure recommendations. The survey allowed respondents to view existing, funded, and proposed draft facilities, including sidewalks, trails or bikeways, and speed control improvement areas, and to comment on proposed draft facilities.

The web map survey was similarly marketed through social media and a postcard mailer. A total of 197 individual responses were collected from mid-July to mid-August 2023. Overall, the survey responses showed a high level of support for the proposed draft facilities with over 125 people indicating support for a project and only 10 people indicating they did not support a project. The results of the web map are shown in Figure 11.

Orange Township Active Transportation Plan Survey Responses

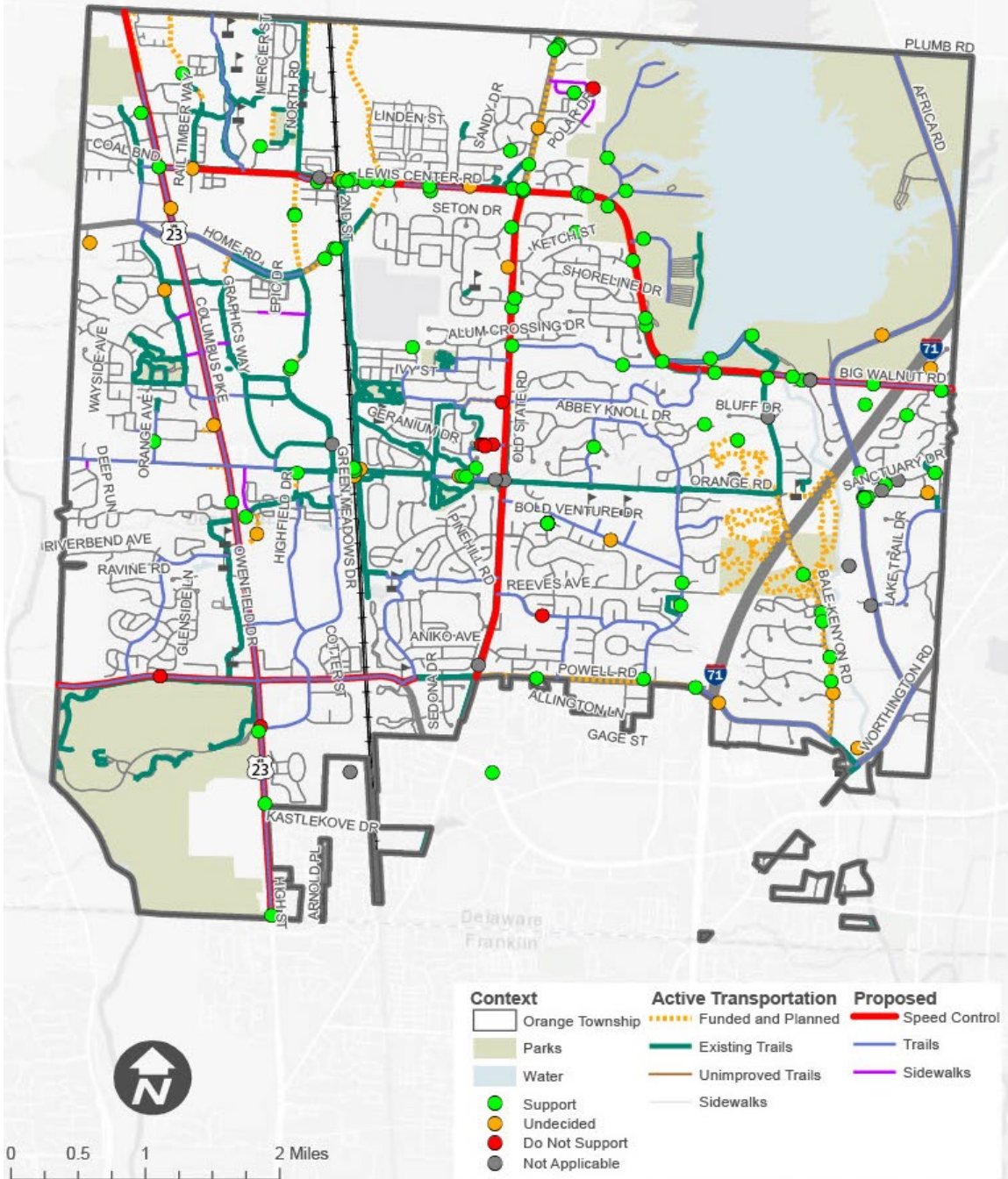


Figure 11. Active Transportation Project Support

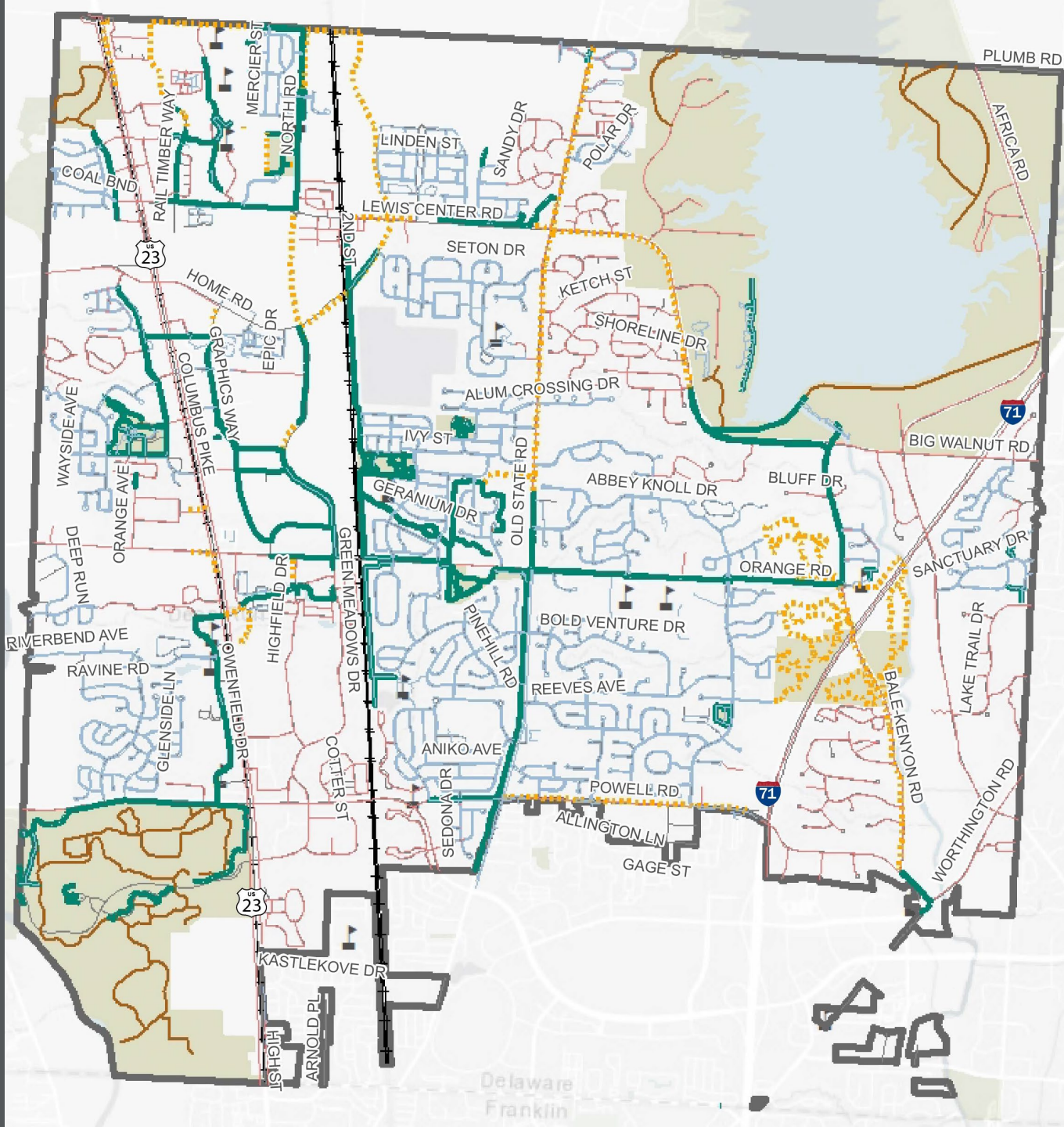
Geographic and mapping information presented in this document is for informational purposes only, and is not suitable for legal, engineering, or surveying purposes. Mapping products presented herein are based on information collected at the time of preparation. Toole Design Group, LLC makes no warranties, expressed or implied, concerning the accuracy, completeness, or suitability of the underlying source data used in this analysis, or recommendations and conclusions derived therefrom.

Existing Network Analysis

Network Connectivity

Existing sidewalks and trails connect in and between neighborhoods, parks, and schools

There are gaps in network along major north/south and east/west corridors

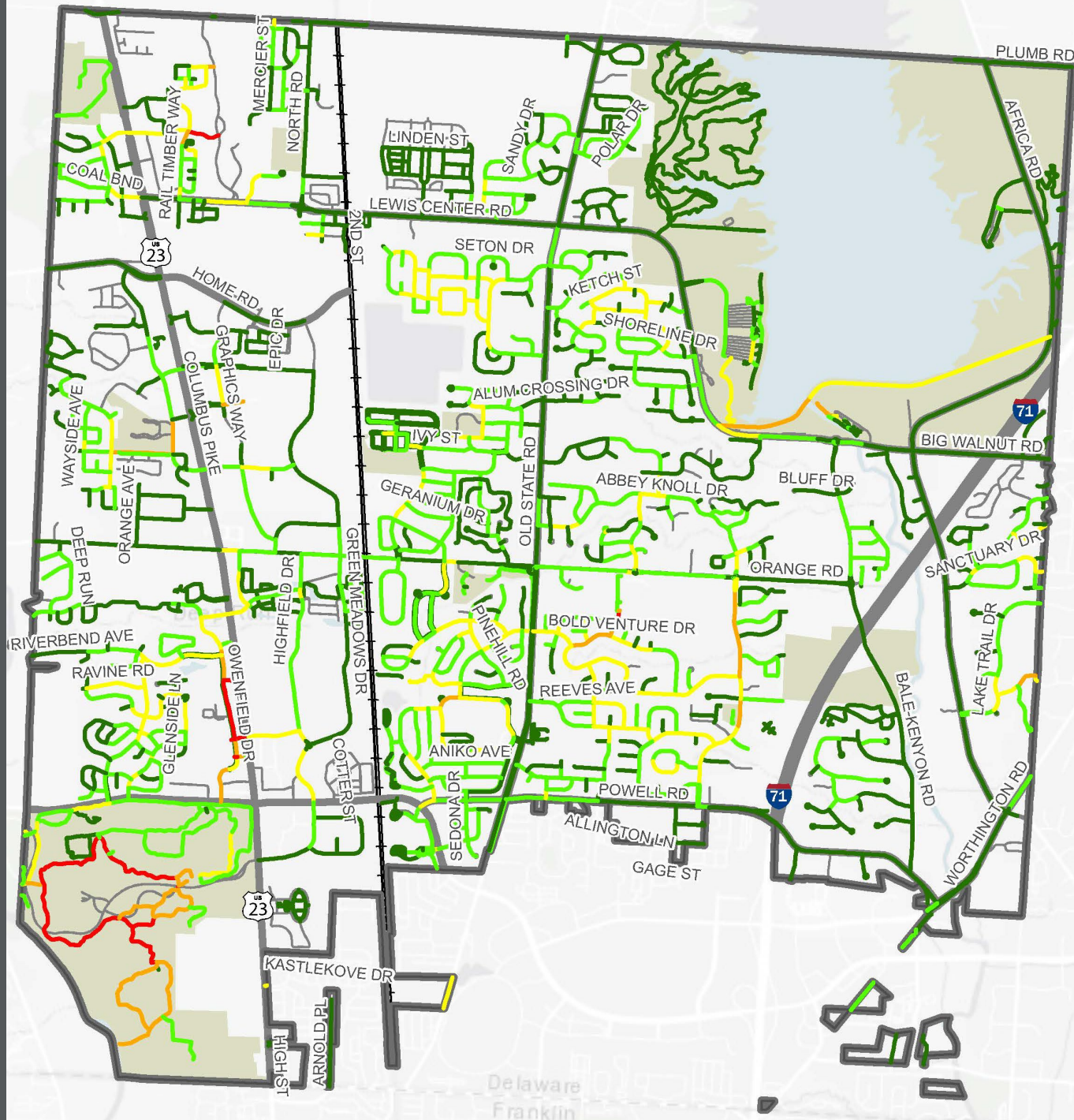


Network Utilization

High levels of walking:

- Near and in parks
- Near schools
- Near commercial areas

Average Daily Traffic (Pedestrian)

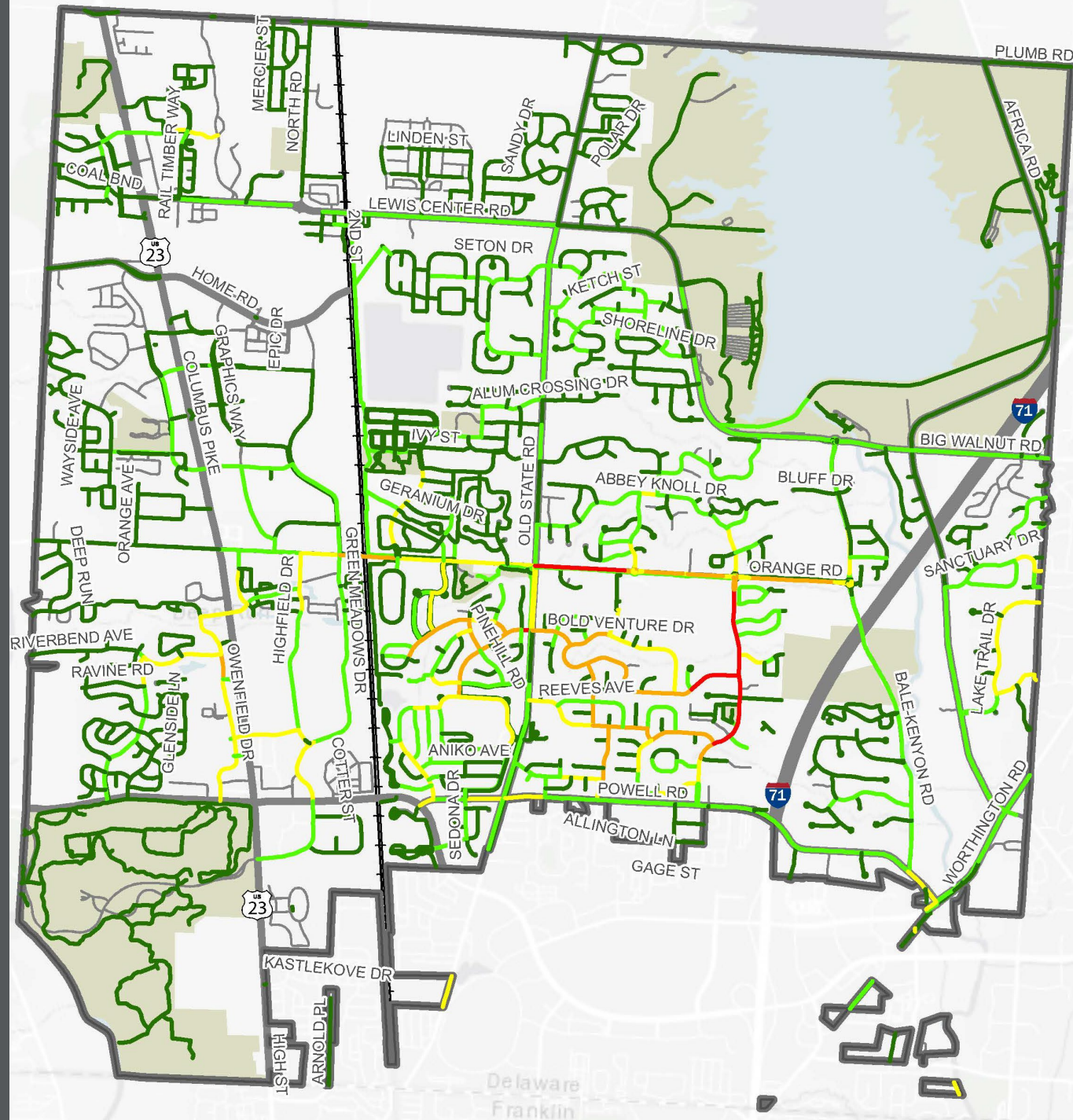


Network Utilization

High levels of biking:

- Near Olentangy Orange Middle and High Schools

Average Daily Traffic (Bicycle)



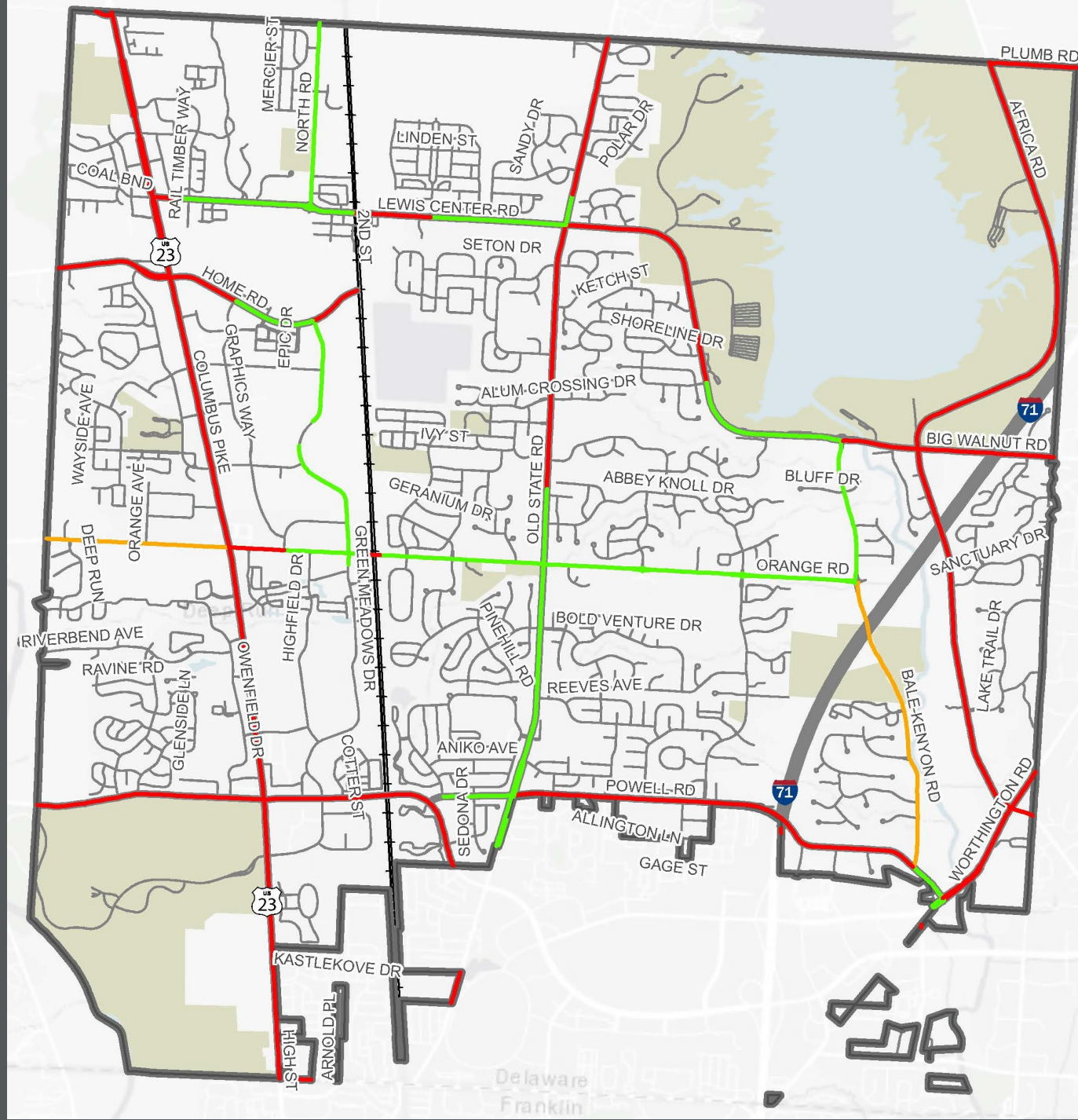
Bicycle Level of Traffic Stress

Several lower-stress routes with shared-use paths

Arterial and collector roads without shared-use paths create barriers

Level of Traffic Stress

- LTS 1 (Low Stress)
- LTS 2
- LTS 3
- LTS 4 (High Stress)



***Active Transportation
Network
Recommendations***

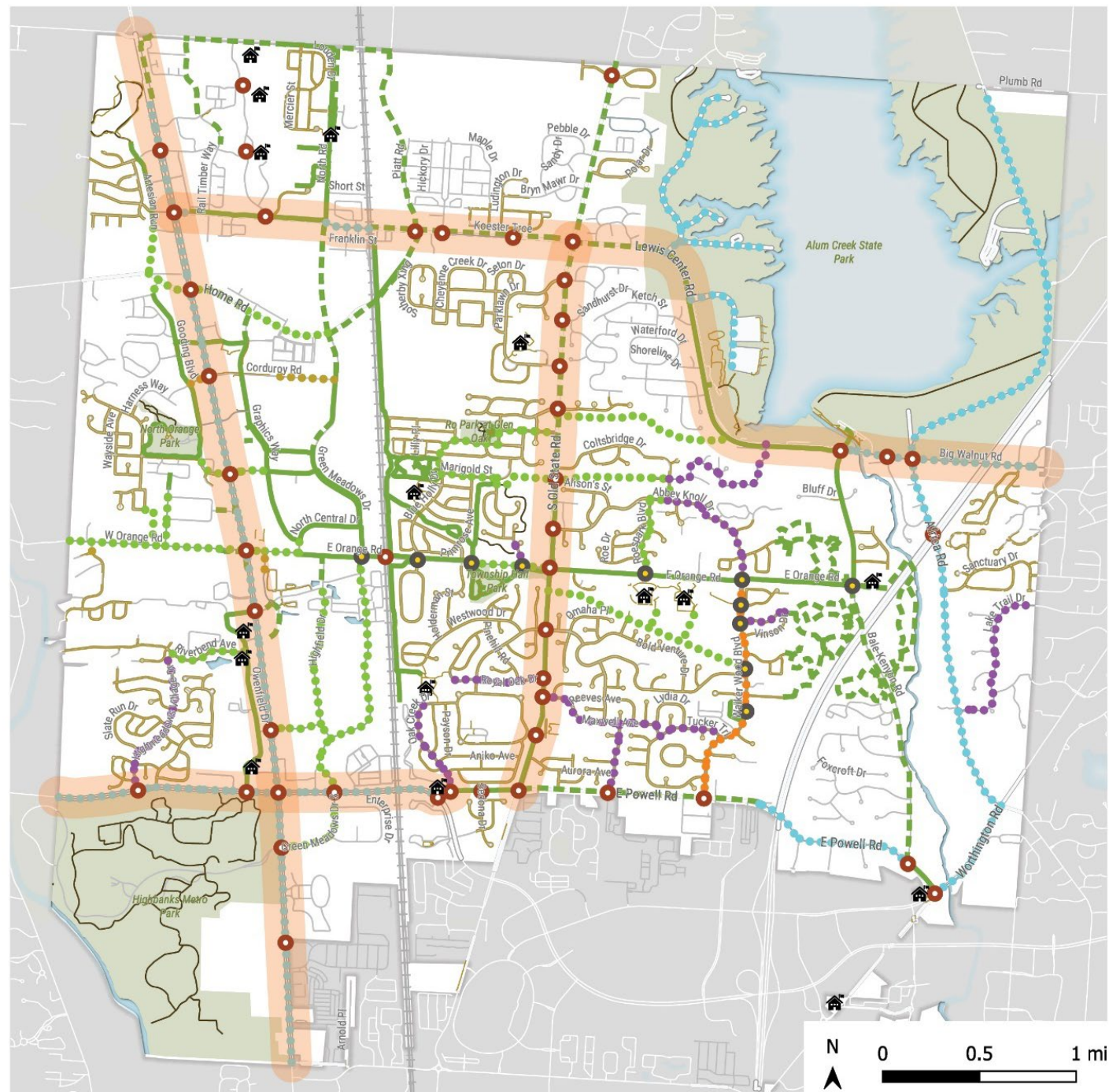
Recommendations: All Projects

- Proposed trails
- Proposed sidewalks and sidewalk networks
- Proposed spot improvements
- Speed management

Legend

Schools	Existing/Planned	Proposed: Orange Township	Proposed: Non-Township
Township Boundary	Existing Trail	Trail	Trail
Railroad	Planned Trail	On-Street Bike Lane	Spot Improvement
Water	Existing Sidewalk	Neighborhood Greenway	Proposed Speed Management
Parks	Unimproved Trail	Sidewalk	
		Spot Improvement	

TOOLE
DESIGN



Priority Projects

Prioritization factors

Equity
(need and demand)

Safety

Comfort

Connectivity to
existing
infrastructure

Synergy with
existing plans

Public input

Relative cost

Orange Township Active Transportation Plan
 Pedestrian and Shared Use Network Prioritization: Orange Township Jurisdiction

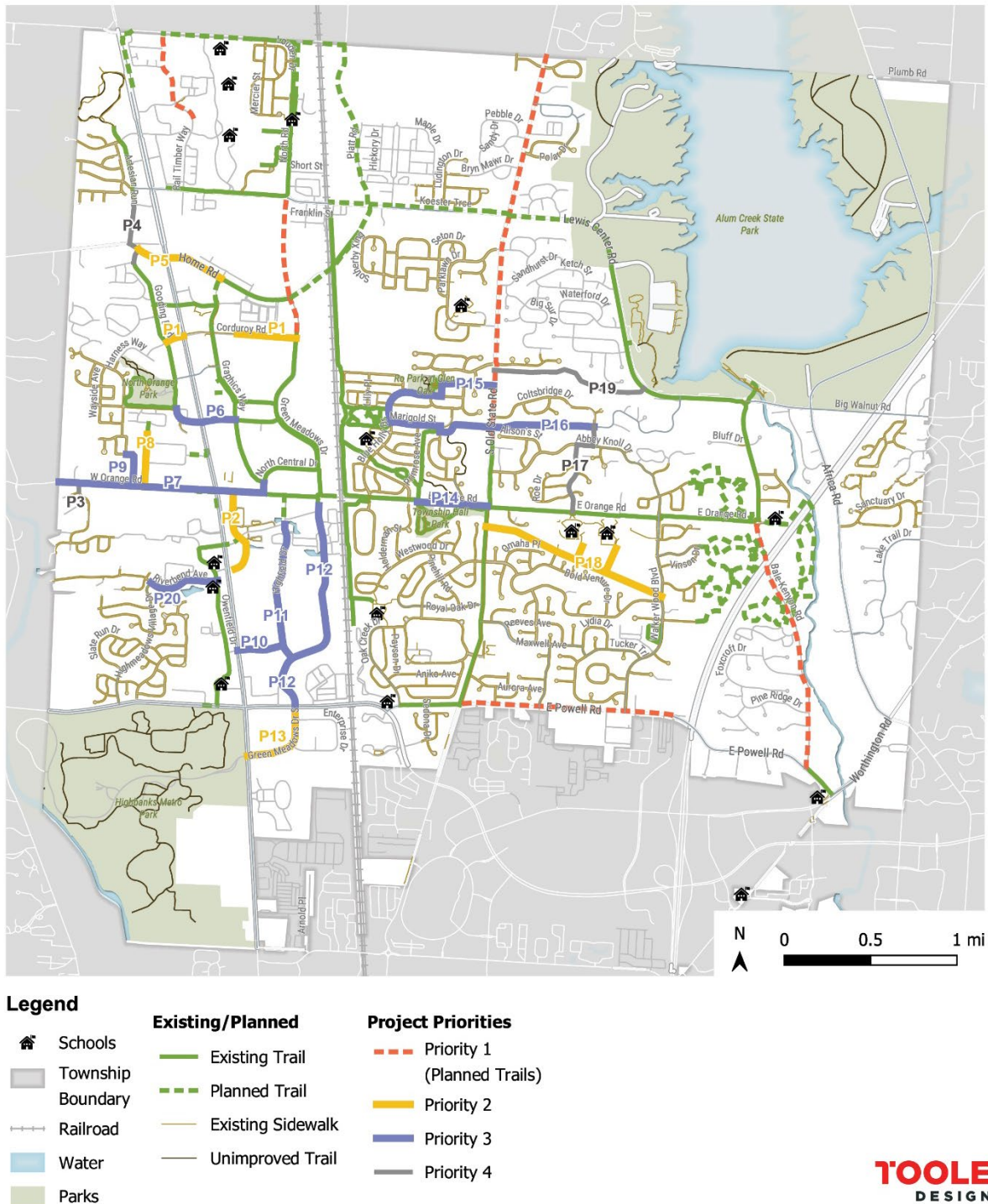


Figure 36. Pedestrian and Shared-Use Network Prioritization (Orange Township)

Geographic and mapping information presented in this document is for informational purposes only, and is not suitable for legal, engineering, or surveying purposes. Mapping products presented herein are based on information collected at the time of preparation. Toole Design Group, LLC makes no warranties, expressed or implied, concerning the accuracy, completeness, or suitability of the underlying source data used in this analysis, or recommendations and conclusions derived therefrom.

Implementation

Implementation Considerations

Roles & Responsibilities

- Orange Township
- Delaware County
- ODOT
- MORPC
- Olentangy Schools
- Local champions

Funding & Maintenance

- ODOT
- MORPC
- ODNR
- OPWC

Monitoring & Evaluation

- Connectivity
- Safety
- Livability
- Accessibility
- Economic development