

METROPOLITAN TRANSPORTATION PLANNING ORGANIZATION (MPO) REPORT

Parag Agrawal, AICP



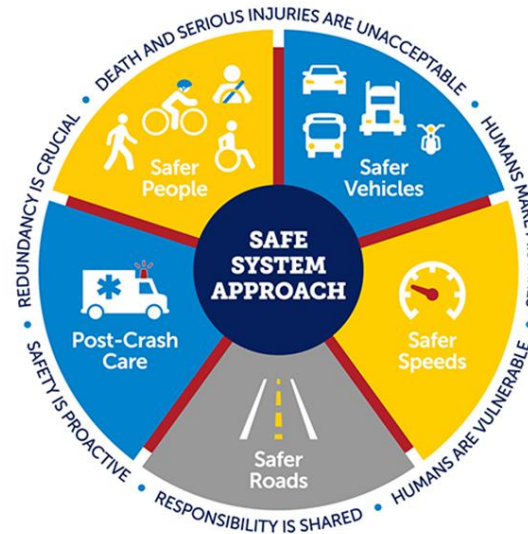
MID-OHIO REGIONAL
MORPC
PLANNING COMMISSION

CONSENT AGENDA



- **T-1-25 Amending the State Fiscal Year 2025 Planning Work Program (PWP)**

- ✓ USDOT Prioritization Process Pilot Program (PPPP) Grant
- ✓ USDOT Safe Streets and Roads for All (SS4A) Grant



BUILDING EQUITABLE & SAFE TRANSPORTATION (BEST): REIMAGINING PROJECT PRIORITIZATION IN CENTRAL OHIO

FY 2022-24 PRIORITIZATION PROCESS PILOT PROGRAM

Contact: Parag Agrawal, AICP
Chief Mobility and Infrastructure Officer and Senior Director of Programming
614.233.4178 | pagrawal@morpc.org

The poster features a collage of images showing various transportation modes: a truck, a person on a bicycle, a person walking, a bus, and a street scene. At the bottom, it includes the MORPC logo and the text "MID-OHIO REGIONAL MORPC PLANNING COMMISSION".

DRIVE INVESTMENT

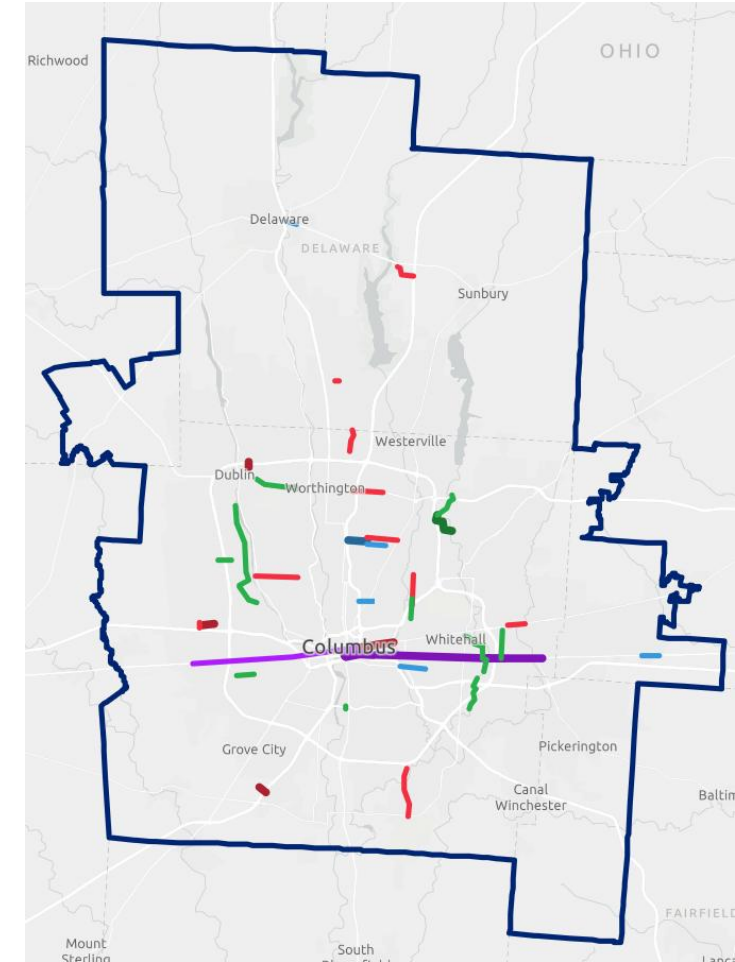


USDOT Discretionary Grant Awards

- **RAISE**
 - City of Columbus – Linden Green Line - \$12,000,000
 - City of Lancaster – Eastside Industrial Connector Feasibility Study - \$800,000
- **Railroad Crossing Elimination Grant Program**
 - ORDC – East Orange Road Underpass, Delaware County - \$21,000,000
 - ORDC – S Court Street, Circleville - \$20,000,000

MORPC-Attributable Funding

- **Draft Funding Recommendations**
 - Updated Existing Commitments - \$270 million
 - New Commitments - \$52 million
- **Public Comment Period**
 - Accepted comments through February 12
 - Received more than 60 comments through a new interactive web map

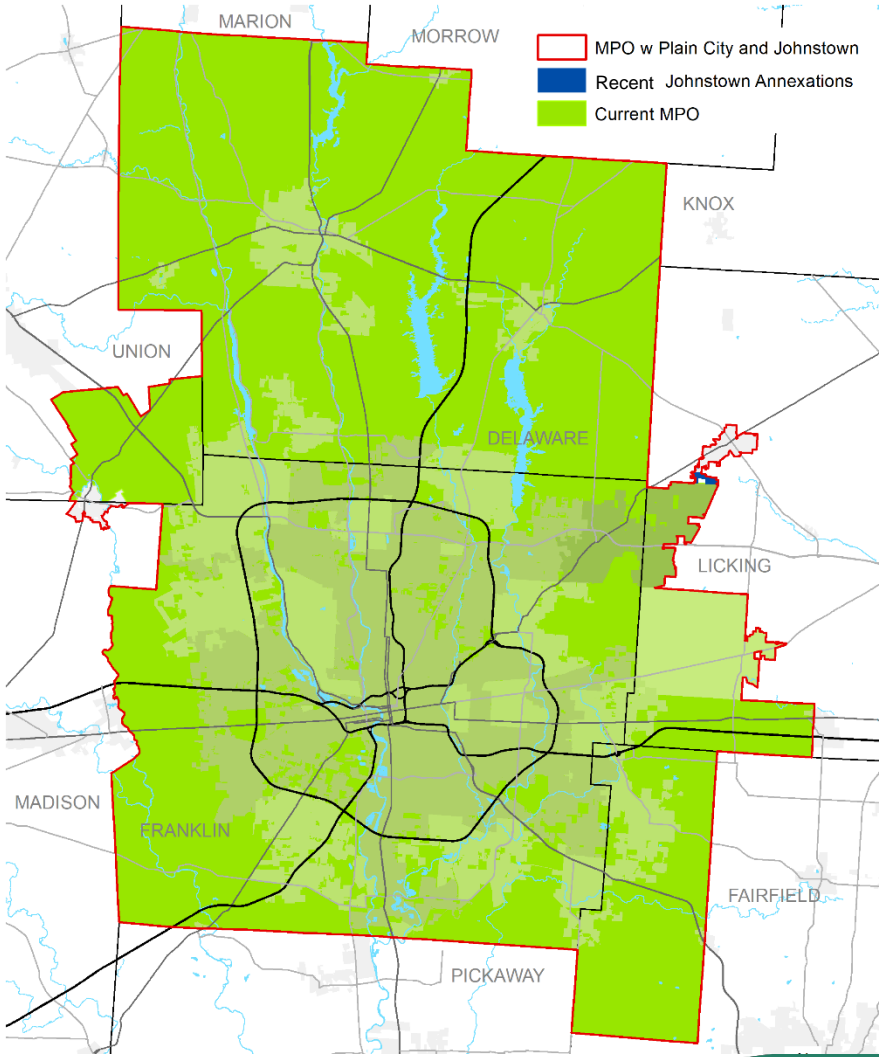
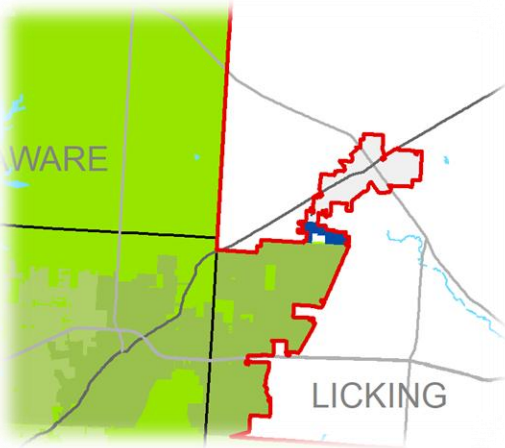
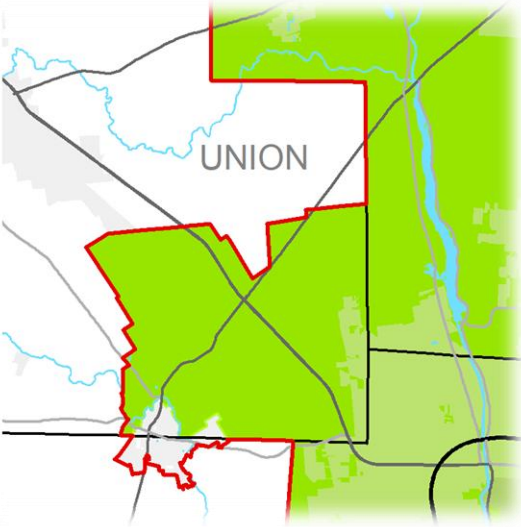


MPO BOUNDARY EXPANSION



Proposed Boundary Expansion to include:

- Village of Plain City jurisdictional boundary
- City of Johnstown jurisdictional boundary
- MPO Boundary grows with jurisdictional boundaries



STRATEGIC PROJECTS

Get Ready initiative

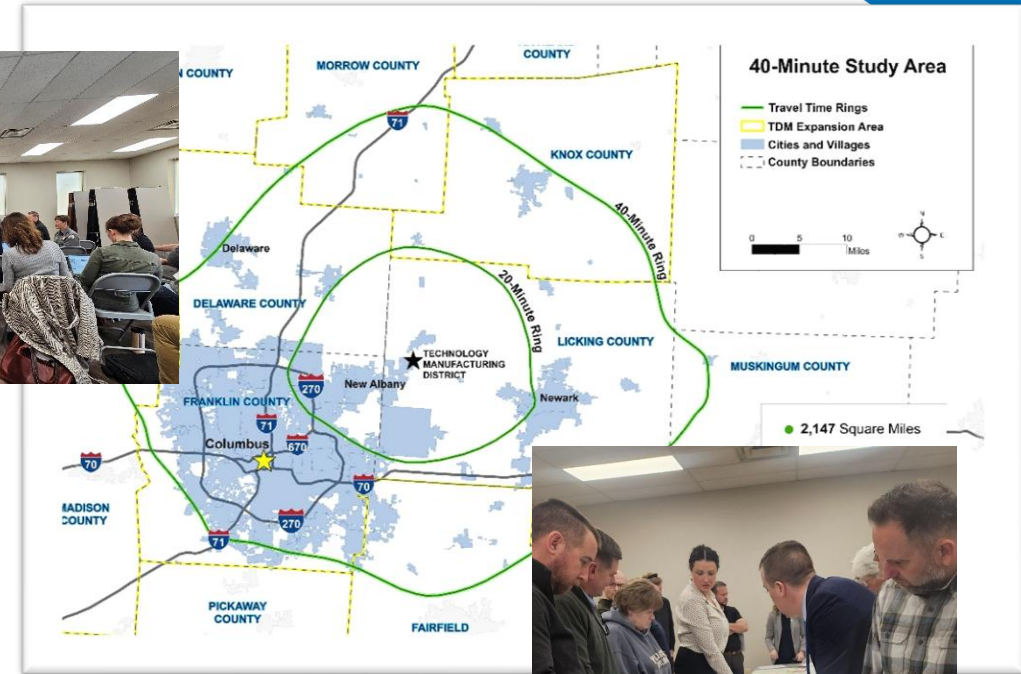
- Planning around proposed Intel Site

US-23 Active Transportation Study

- Outline a regional vision
- Document current state of walking & bicycling
- Identify improvements

Gohio Commute Campaign – Return to the Workplace

- Focused campaign targeting returning to the office workers
- Estimating nearly 50,000 workers returning to Franklin County
- Emphasis on return-to-work commute options, new Gohio Commute App, and new commute rewards program
- Campaign timeline – May - July

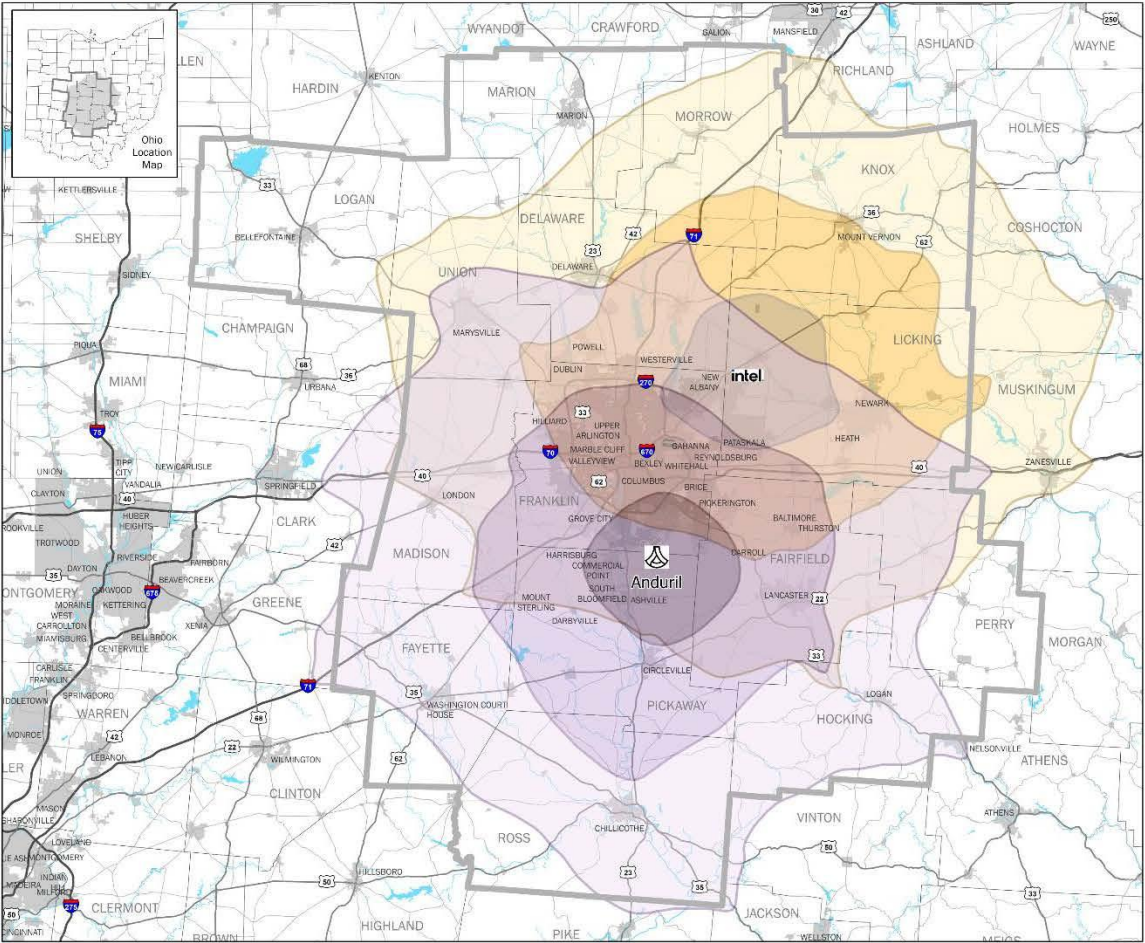


MORPC

ANDURIL PLANNING



MORPC



Anduril and Intel Drive Times

Anduril Site

Intel Site

Anduril Drive Times

20 minutes

40 minutes

60 minutes

Intel Drive Time

20 minutes

40 minutes

60 minutes

Note: Travel assumed by car. Travel times are approximate from Anduril and Intel sites out at 5pm. Buffers generated using ESRI Network current conditions.



The information shown on this map is compiled from various sources made available to us which we believe to be reliable. N:\VRC\GIS\SCORE\EconDev\Anduril\Anduril Drive Times.aprx 2/7/2025

Population within 40 minute drive time of both Intel and Anduril Sites

Population (2024): 1,120,000
Households (2024): 459,000

Population within 60 minute drive time of both Intel and Anduril Sites

Population (2024): 1,991,000
Households (2024): 790,000

Rickenbacker Area Freight Alliance Workshop