



MID-OHIO REGIONAL
MORPC
PLANNING COMMISSION

111 Liberty St., Suite 100
Columbus, Ohio 43215
www.morpc.org

NOTICE OF A MEETING

SUSTAINABLE2050 – HYBRID MEETING

MID-OHIO REGIONAL PLANNING COMMISSION
111 Liberty St., #100, Columbus, OH 43215

December 5, 2024, 9:30 a.m. – 11:00 a.m.

AGENDA

Welcome and Introductions

Columbus and Franklin County Tree Canopy Assessment – *Jennie McAdams, Franklin County Public Health and Jon Bowers, Columbus Recreation and Parks*

The Columbus and Franklin County Tree Canopy Assessment is a collaborative effort between multiple agencies, including Franklin County Public Health, Columbus Recreation and Parks, and the Franklin County Engineer's Office. The study process involved analyzing land cover changes from 2011 to 2021 using LiDAR technology.

Findings included:

- Tree canopy coverage increased by 2.8% countywide.
- Areas with lower tree canopy often correlated with historical redlining, lower-income neighborhoods, and higher air pollution levels.
- Increased tree canopy is linked to reduced stormwater runoff, carbon sequestration, and improved public health outcomes (e.g., reduced asthma rates).
- Jurisdictional analysis showed Bexley had the highest tree canopy, while Grandview Heights, Minerva Park, and Urbancrest experienced canopy losses.

The Tree Equity Score Analyzer was introduced as a new tool for planning and prioritization of tree planting.

Next Steps:

- Community fact sheets with jurisdiction-specific data are available online.
- Franklin County Public Health will distribute tree canopy data via its Climate and Health Dashboard.

MORPC Program Updates

208 Planning

- MORPC is pursuing designation as an Areawide Planning Agency under Section 208 of the Clean Water Act.

William Murdock, AICP
Executive Director

Chris Amorose Groomes
Chair

Michelle Crandall
Vice Chair

Ben Kessler
Secretary

- An Ad-hoc committee has been established to review operational procedures and dispute resolution for wastewater facility planning.
- The Regional Water Study covering MORPC's 15-county area will conclude in February 2025, focusing on water supply, conservation strategies, and infrastructure planning.

Air Monitoring Project

- The CLEAN Project (Community Led Enhanced Air Quality Network) involves the deployment of 40 low-cost air quality sensors throughout Franklin County.
- Progress:
- 21 sensors installed in the past three weeks; 14 more scheduled by year-end.
- Sensors will feed data into Ramboll's SHAIR model to provide real-time pollution source attribution.
- Community outreach efforts include public education events and digital display dashboards for local transparency.

Charging and Fueling Infrastructure Grant Award

- MORPC received \$15M in federal funding to install EV chargers in 13 counties.
- 406 charging ports will be installed, with an additional 50 curbside chargers in Columbus.
- Next steps include finalizing grant agreements and launching a site assessment and RFP process.

Central Ohio Climate Action Plan

- The Regional Greenhouse Gas Inventory was expanded from four to ten sectors, adding categories such as solid waste, refrigerants, and water infrastructure.
- Transportation emissions remain the largest contributor, followed by residential and commercial energy consumption.
- Mitigation strategies will be developed to address emission reduction goals.

Government Affairs & Policy

Regional Sustainability Agenda

2025-2028 Regional Sustainability Agenda Goals:

1. Improve air quality and reduce climate change impacts.
2. Protect natural resources and enhance regional resilience.
3. Promote equitable communities with improved mobility and greenspace access.
4. Advance sustainable economic growth, including green jobs and affordable housing.
5. Enhance climate resilience through disaster preparedness and infrastructure adaptation.

Timeline for Completion of Update

December 2024 – January 2025: Strategy alignment with current and future sustainability initiatives.

February 2025 – Public stakeholder review of the draft agenda.

March 2025 – Presentation to the Sustainability Advisory Committee.

April 2025 – MORPC Commission adoption.

Priority Topics for 2025

Members suggested:

- Expansion of EV infrastructure and clean energy workforce development.
- Strengthening climate resilience measures for extreme weather preparedness.

- 
- Increased funding for urban greenspace and air quality initiatives.

Member Updates

Meeting Adjourned

Please notify Lynn Kaufman at 614-233-4189 or lkaufman@morpc.org to confirm your attendance at this meeting or if you require special assistance.

The next Sustainable2050 meeting will be February 27, 2025, at 9:30 a.m.





SUSTAINABLE2050 QUARTERLY MEETING

December 5, 2024



MID-OHIO REGIONAL
MORPC
PLANNING COMMISSION

AGENDA



- 9:30 a.m.** **Welcome & Introductions** – *Brandi Whetstone, Director of Sustainability, MORPC*
- 9:40 a.m.** **Featured Presentation: Columbus and Franklin County Tree Canopy Assessment** –
*Jennie McAdams, Franklin County Public Health, and John Bowers, Columbus Recreation
and Parks*
- 10:00 a.m.** **MORPC Program Updates** – *Brandi Whetstone*
- Water Resources (208 planning & Regional Water Study) – *Edwina Teye*
 - Air Monitoring – *JR Diaz-Hernandez*
 - Charging & Fueling Infrastructure Grant Next Steps – *Brian Filiatraut*
 - Central Ohio Climate Action Plan – *Brian Filiatraut*
 - Government Affairs & Policy – *Kyle Probert*
- 10:20 a.m.** **Regional Sustainability Agenda** – *Brandi Whetstone & Karina Peggau*
- 10:35 a.m.** **Priority Topics for 2025** – *Brandi Whetstone*
- 10:45 a.m.** **Member Updates** – *All*
- 11:00 a.m.** **Adjourn**

Columbus and Franklin County Tree Canopy

Jennie McAdams, Franklin County Public Health Sustainability Supervisor
John Bowers, City of Columbus Recreation and Parks Department GIS Manager



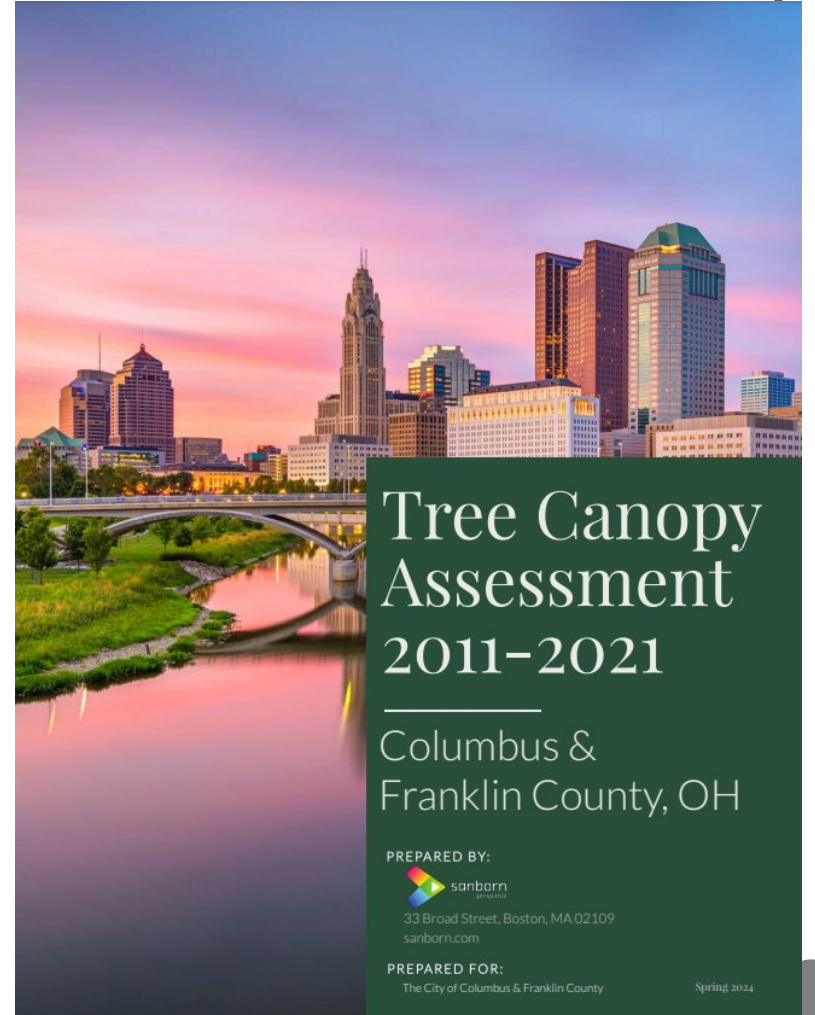
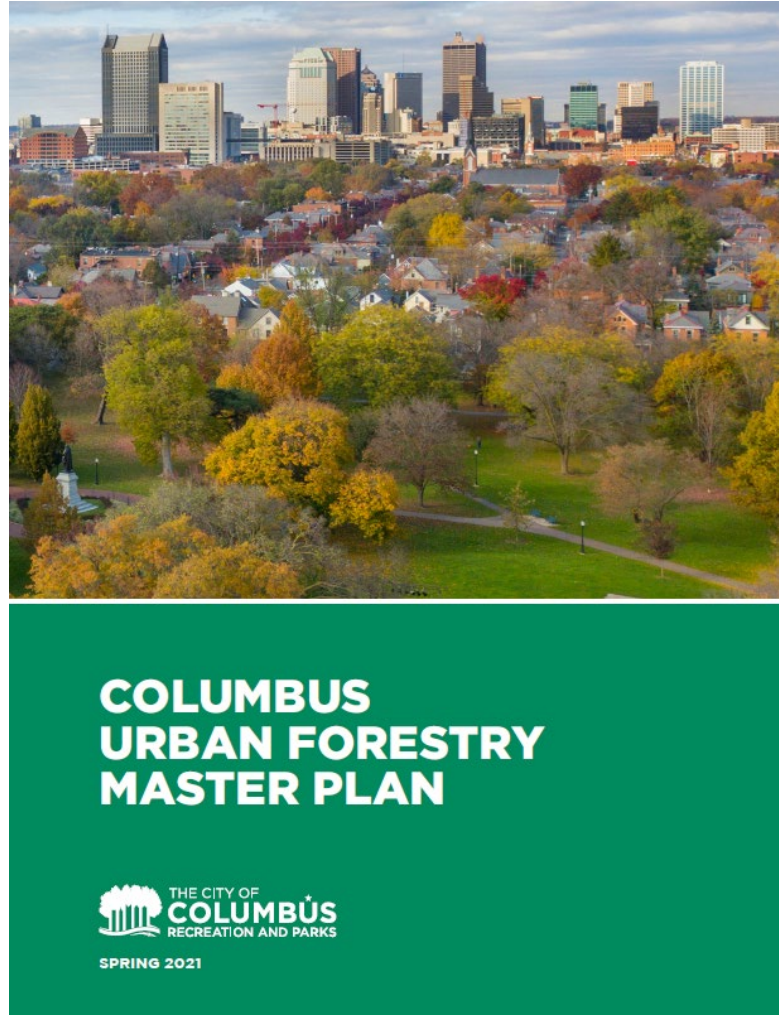
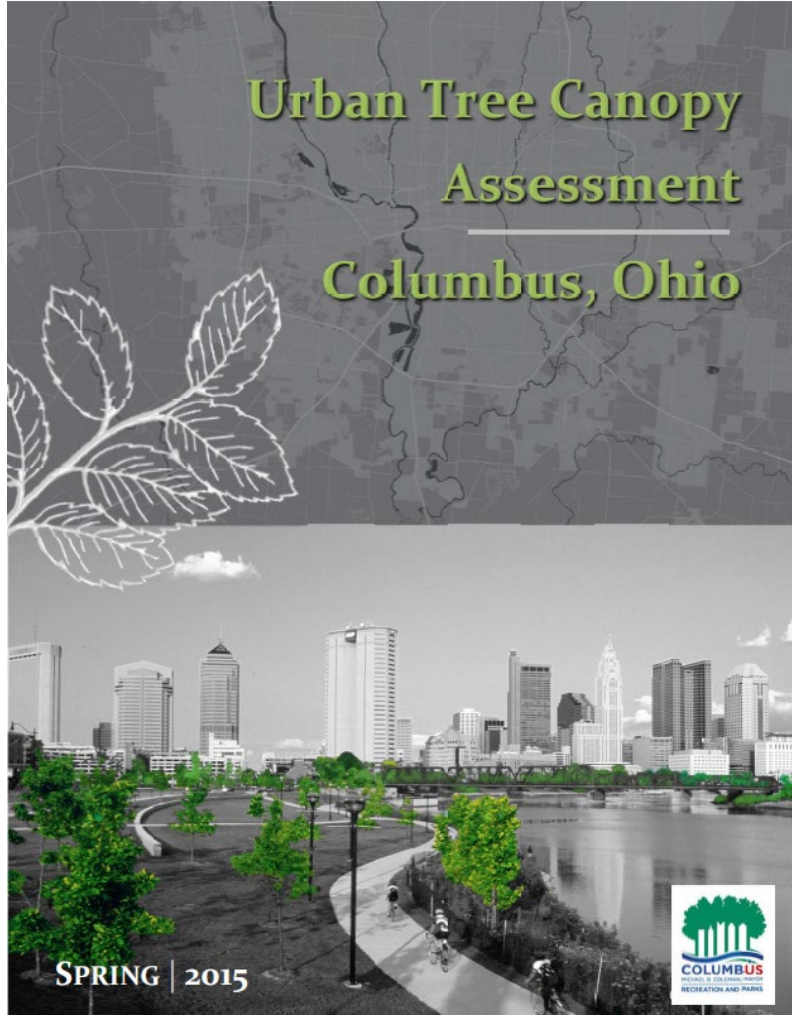
THE CITY OF
COLUMBUS
ANDREW J. GINTHER, MAYOR

RECREATION AND PARKS
DEPARTMENT

Franklin County
Public Health



Tree Canopy Assessment Background



<https://columbusrecparcs.com/wp-content/uploads/2024/05/FinalColumbusFranklin-County-Tree-Canopy-Assessment-2011-2021-2.pdf>

Franklin County
Public Health

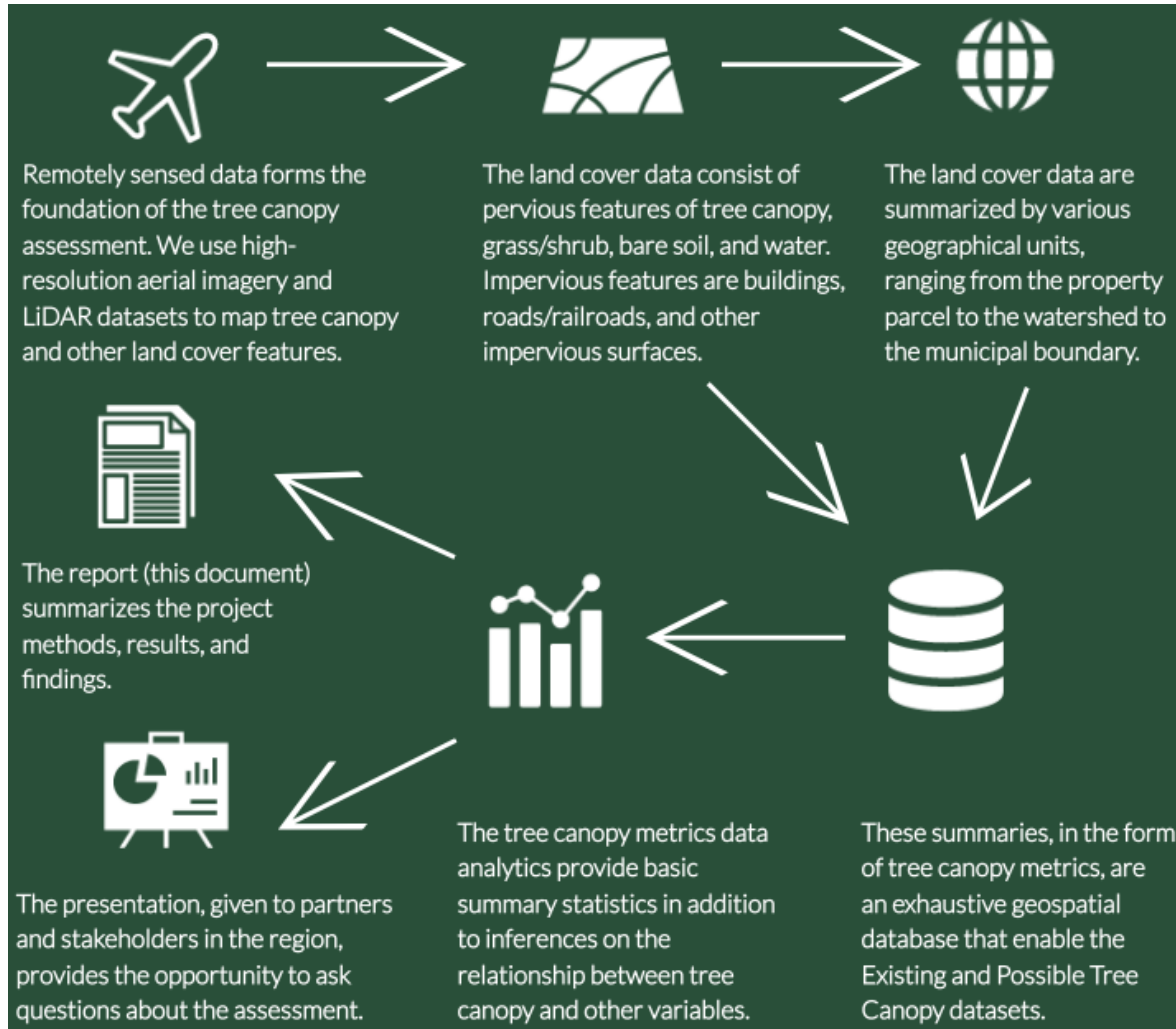


RECREATION AND PARKS
DEPARTMENT

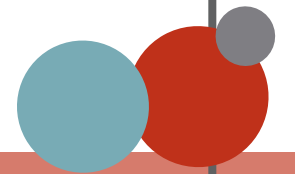
Partners



Study Process



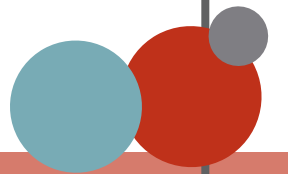
Land cover and tree canopy change were then summarized by various geographical units and further analyzed. Individual tree objects were also segmented from LiDAR and analyzed. Findings of these analyses were published in the project report and all data delivered by the consultant.



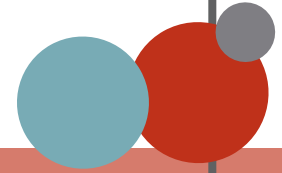
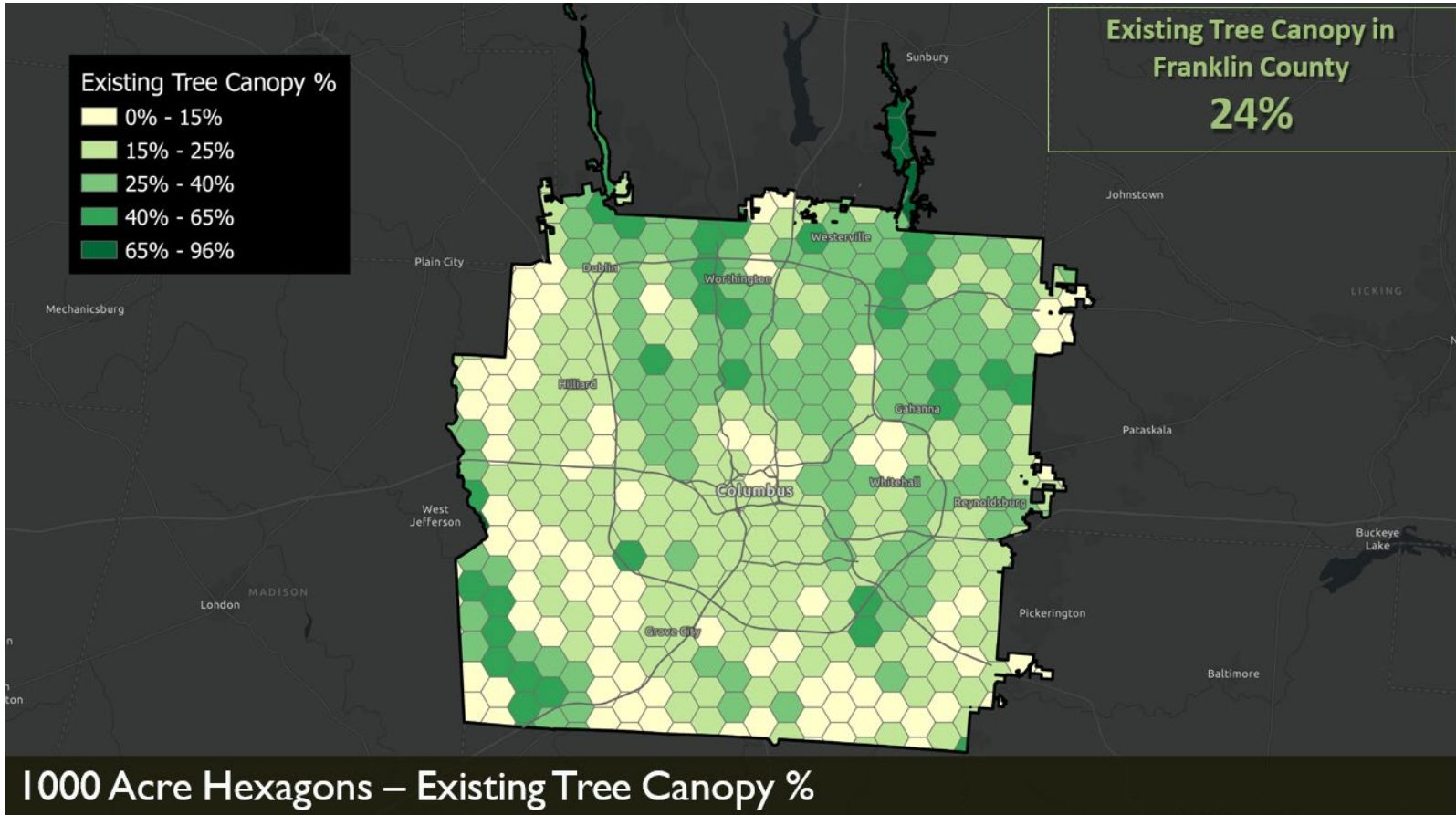
Why is tree canopy Important?

- Trees provide essential ecosystem services for Columbus and Franklin County, including an estimated annual benefit of:
 - \$10M in avoided stormwater runoff
 - \$8M in carbon sequestration
 - \$15M in avoided health care cost related to air pollution.

Higher tree canopy is also associated with improved social indicators, such as voter turnout, lower crime rate, and higher property values.



Overarching results



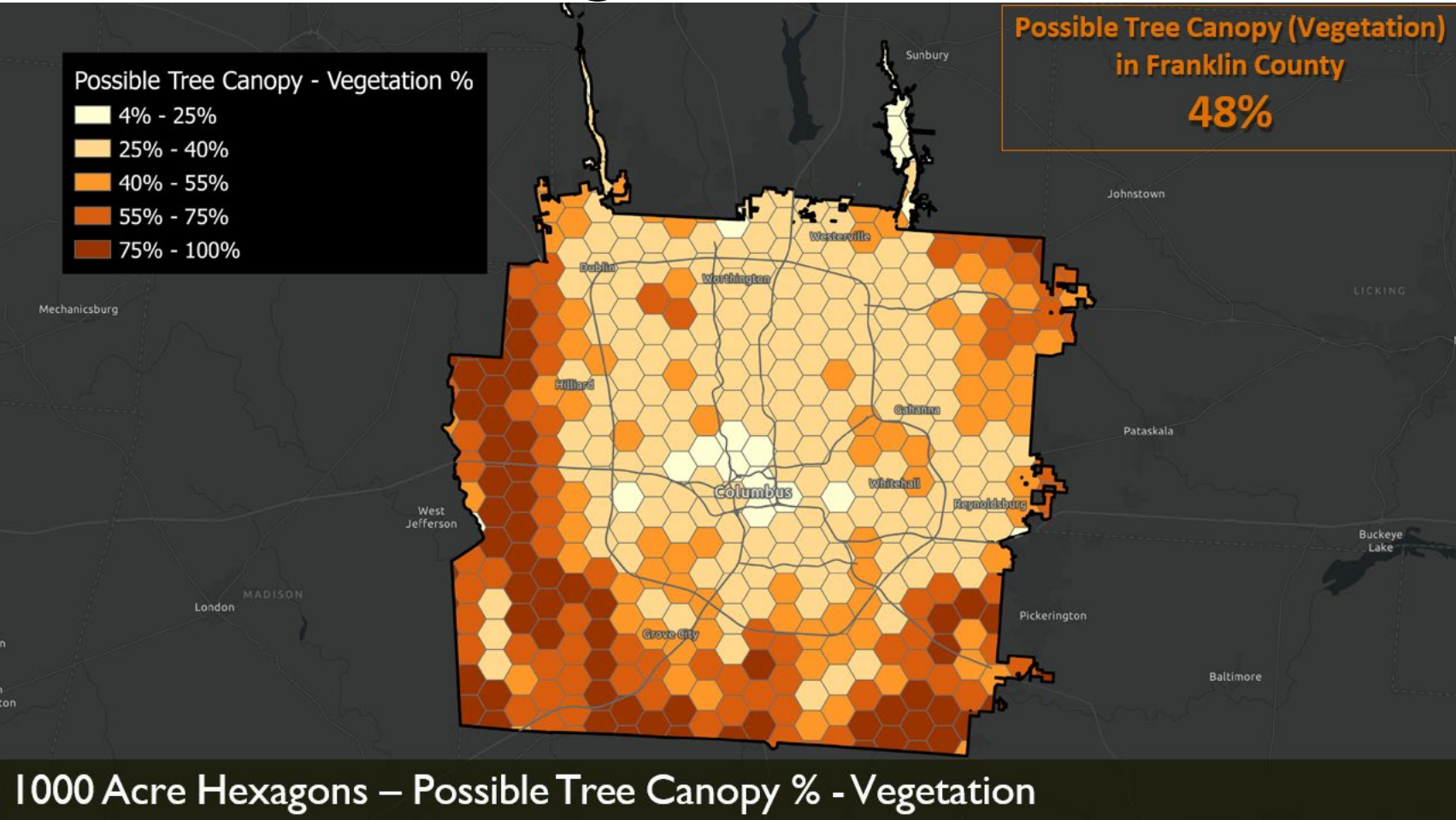
Overarching results

Possible Tree Canopy - Vegetation %

- 4% - 25%
- 25% - 40%
- 40% - 55%
- 55% - 75%
- 75% - 100%

Possible Tree Canopy (Vegetation) in Franklin County

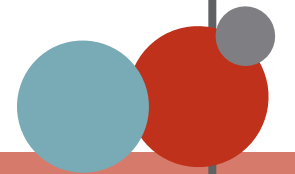
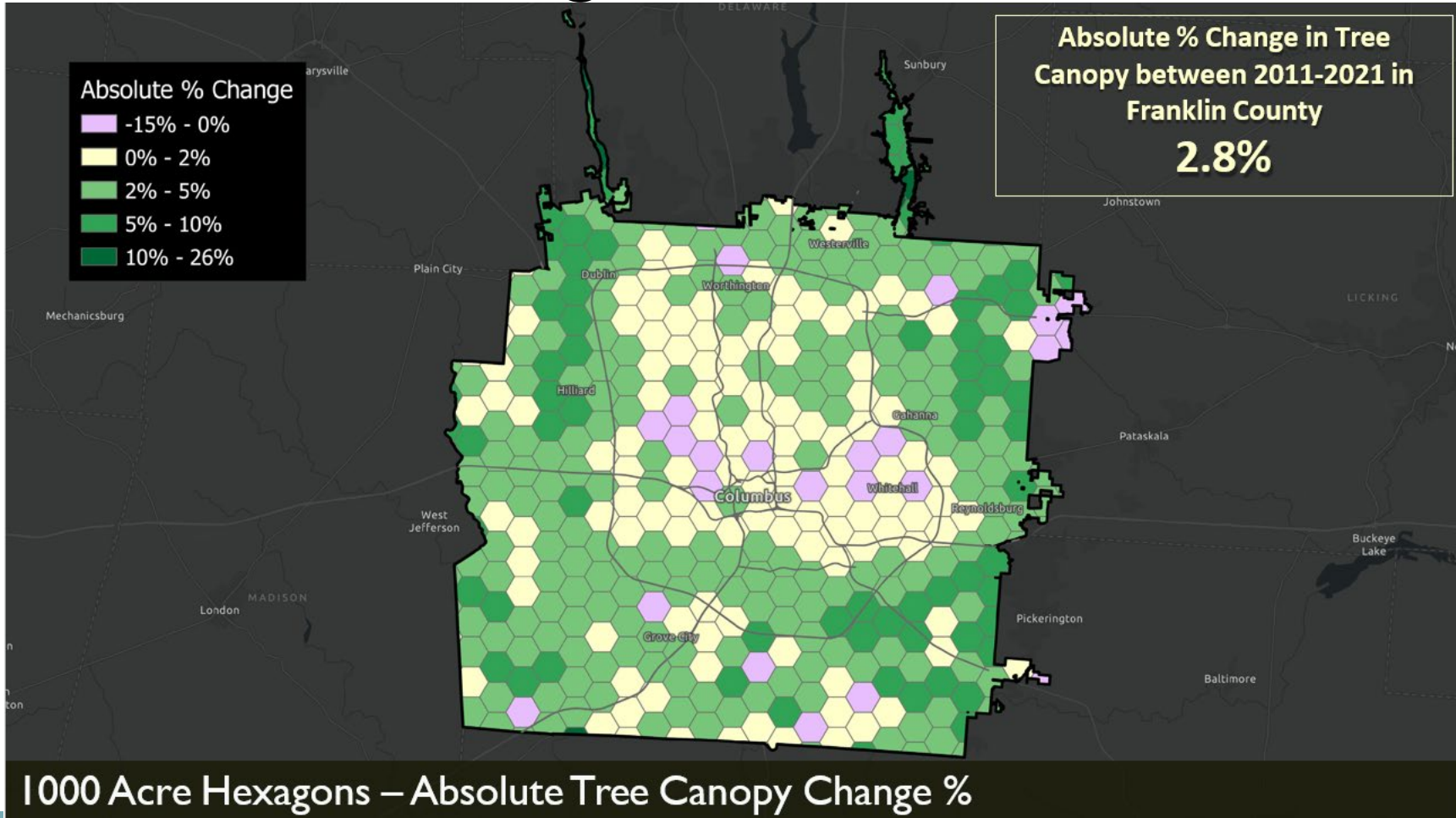
48%



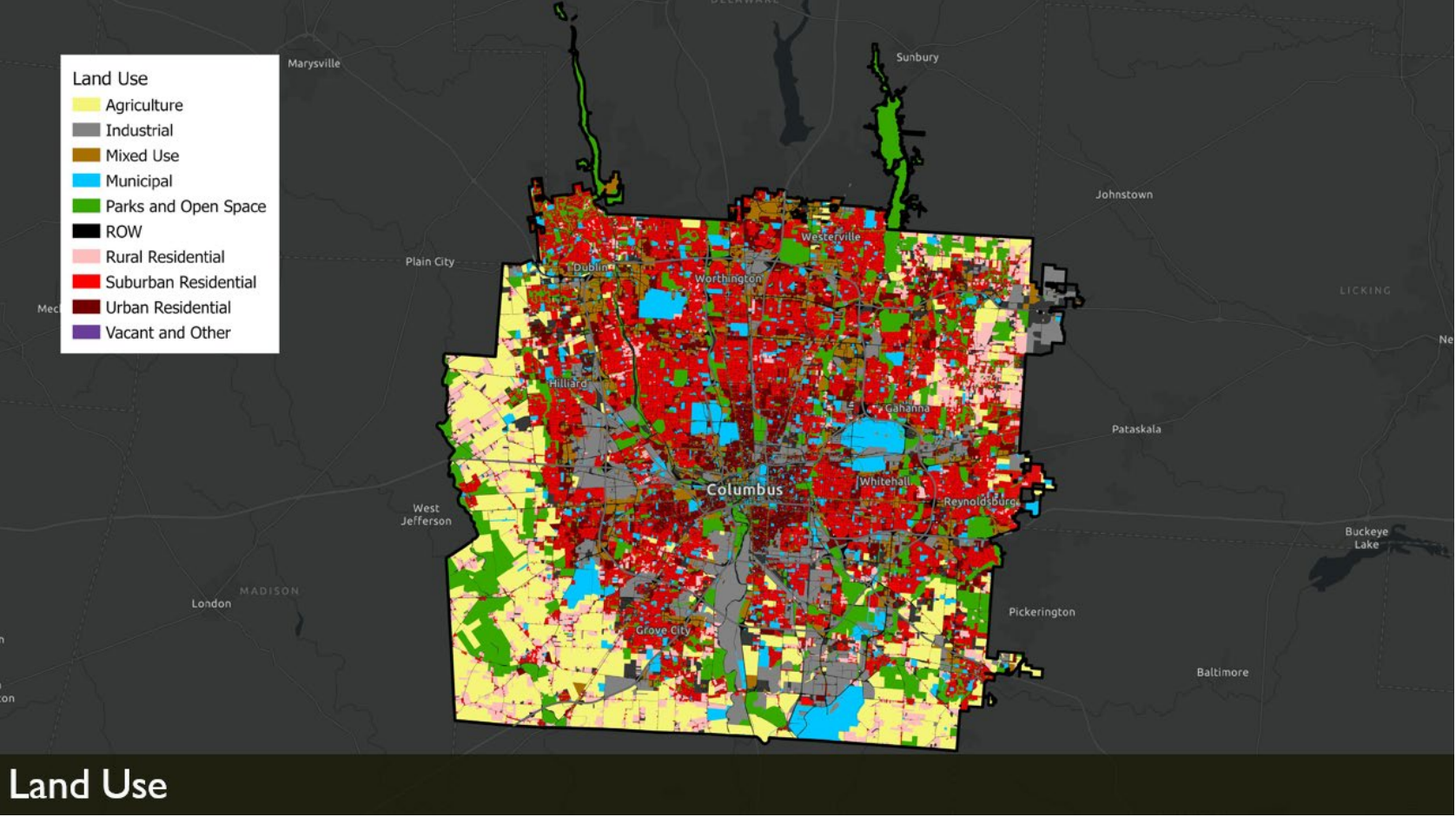
1000 Acre Hexagons – Possible Tree Canopy % - Vegetation



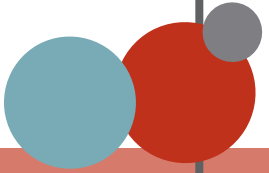
Overarching results



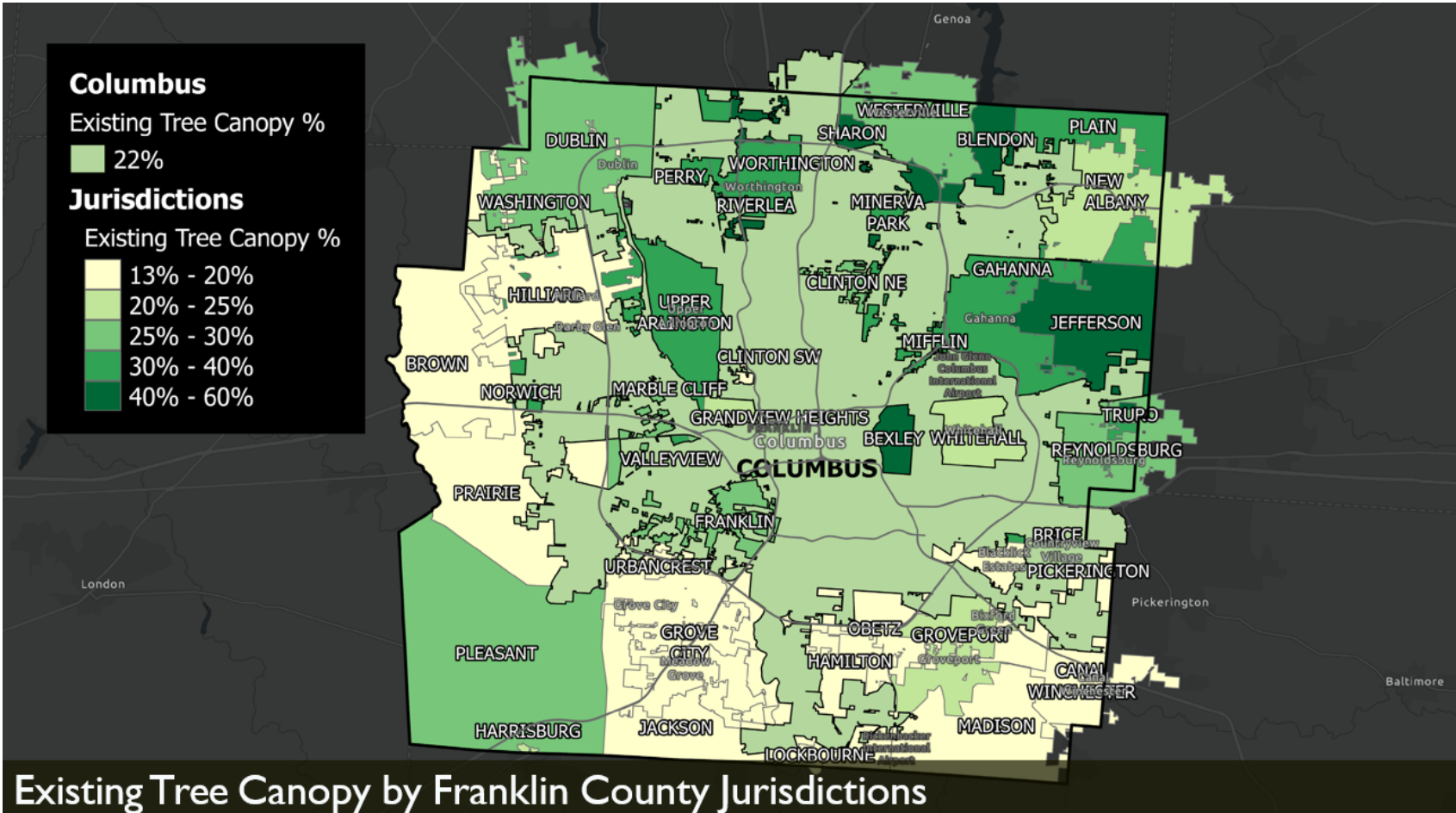
Overarching results



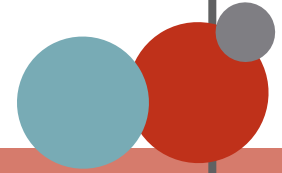
Land Use



Overarching results

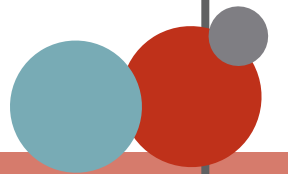


Existing Tree Canopy by Franklin County Jurisdictions

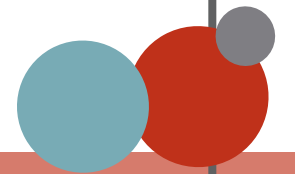
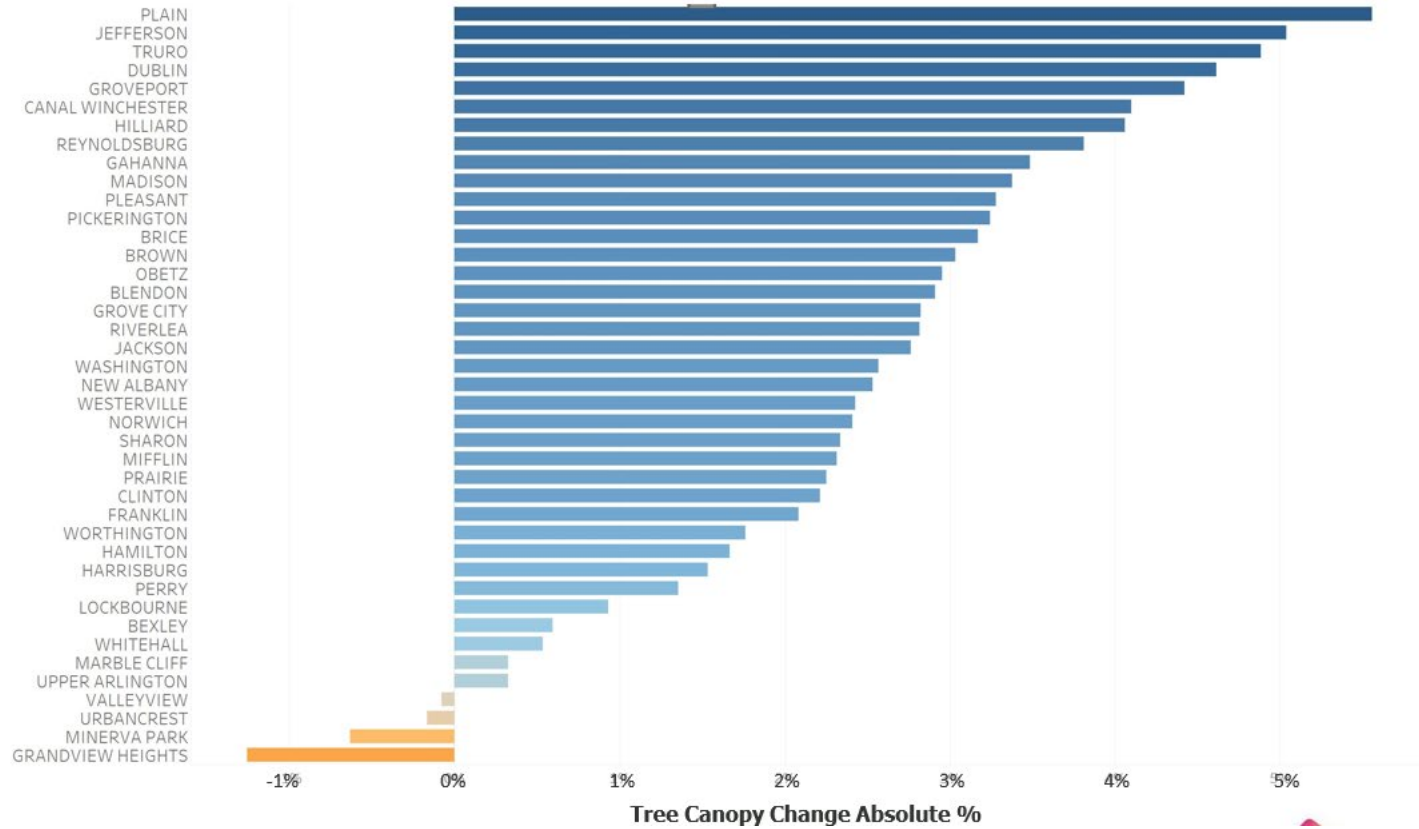


Accessing the Fact Sheets and Reports

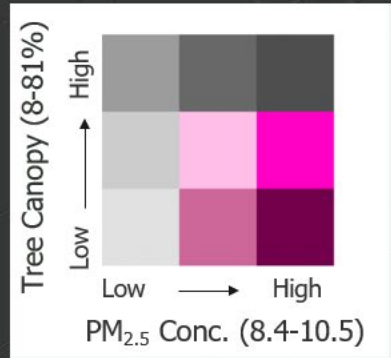
- [The City of Columbus Tree Canopy Assessment](#)
- [FCPH Data Hub: Climate and Health Dashboard](#)



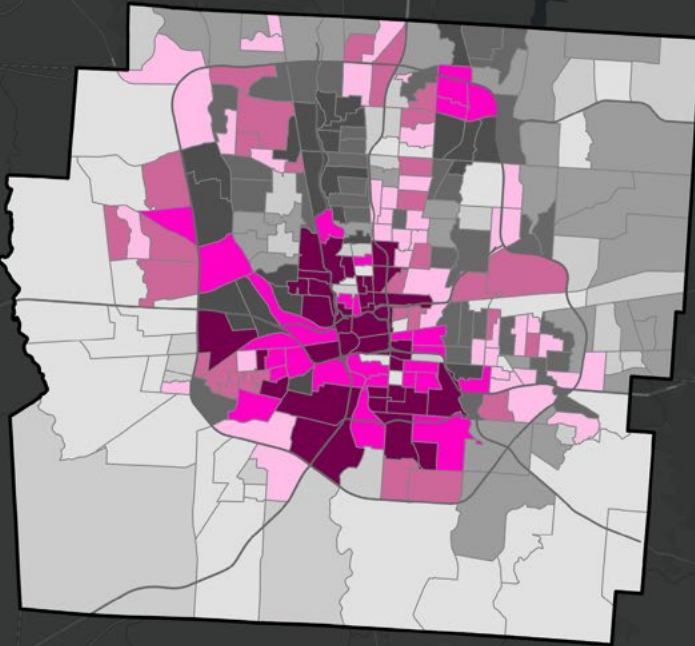
Overarching results



Overarching results



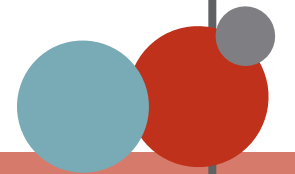
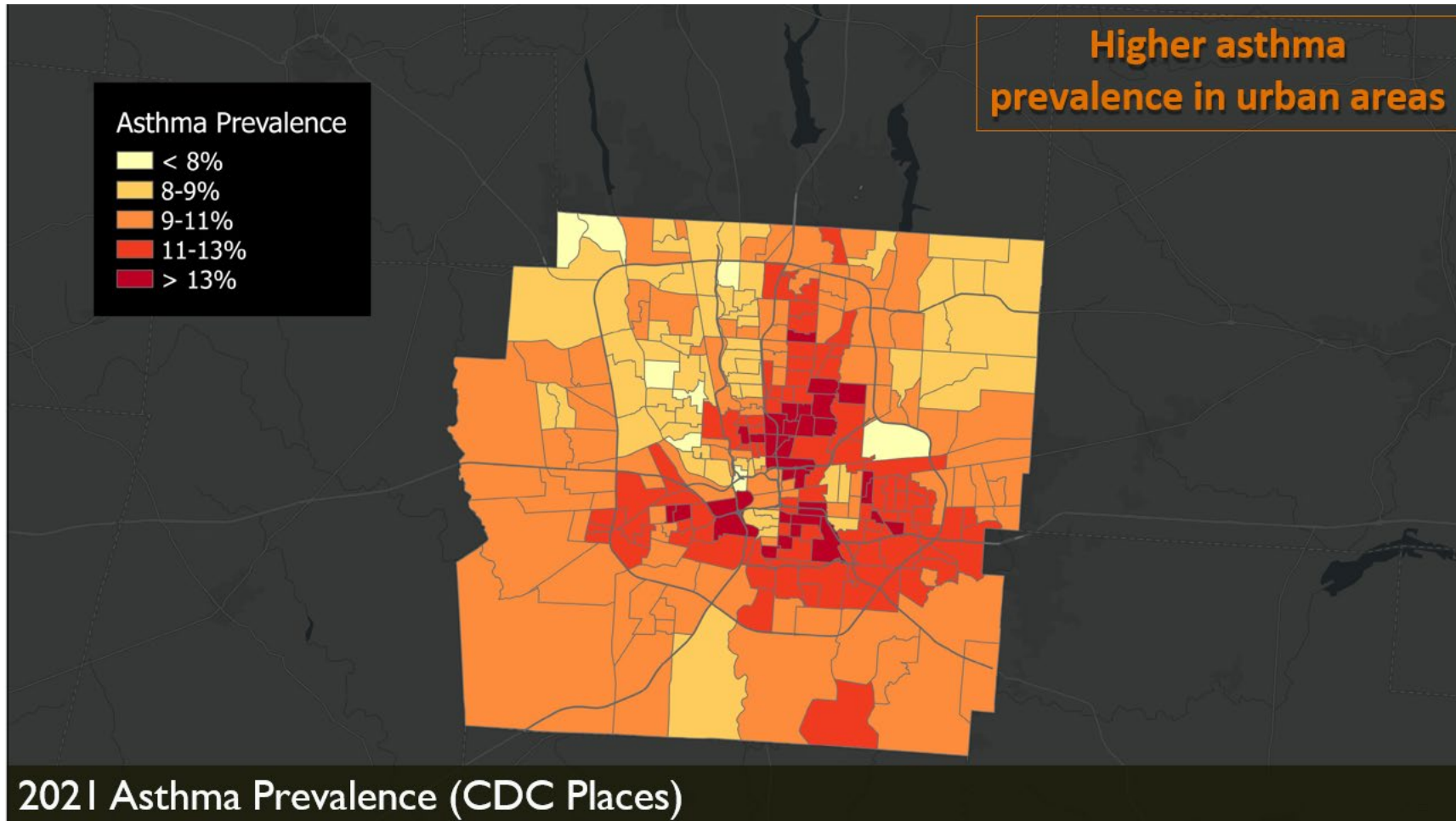
Higher PM_{2.5} concentrations near city center and lower canopy coverage



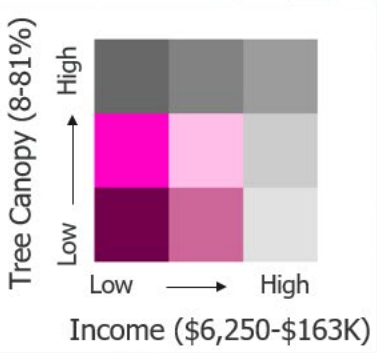
Trees and Air Pollution – Existing Tree Canopy and Particulate Matter (PM_{2.5})



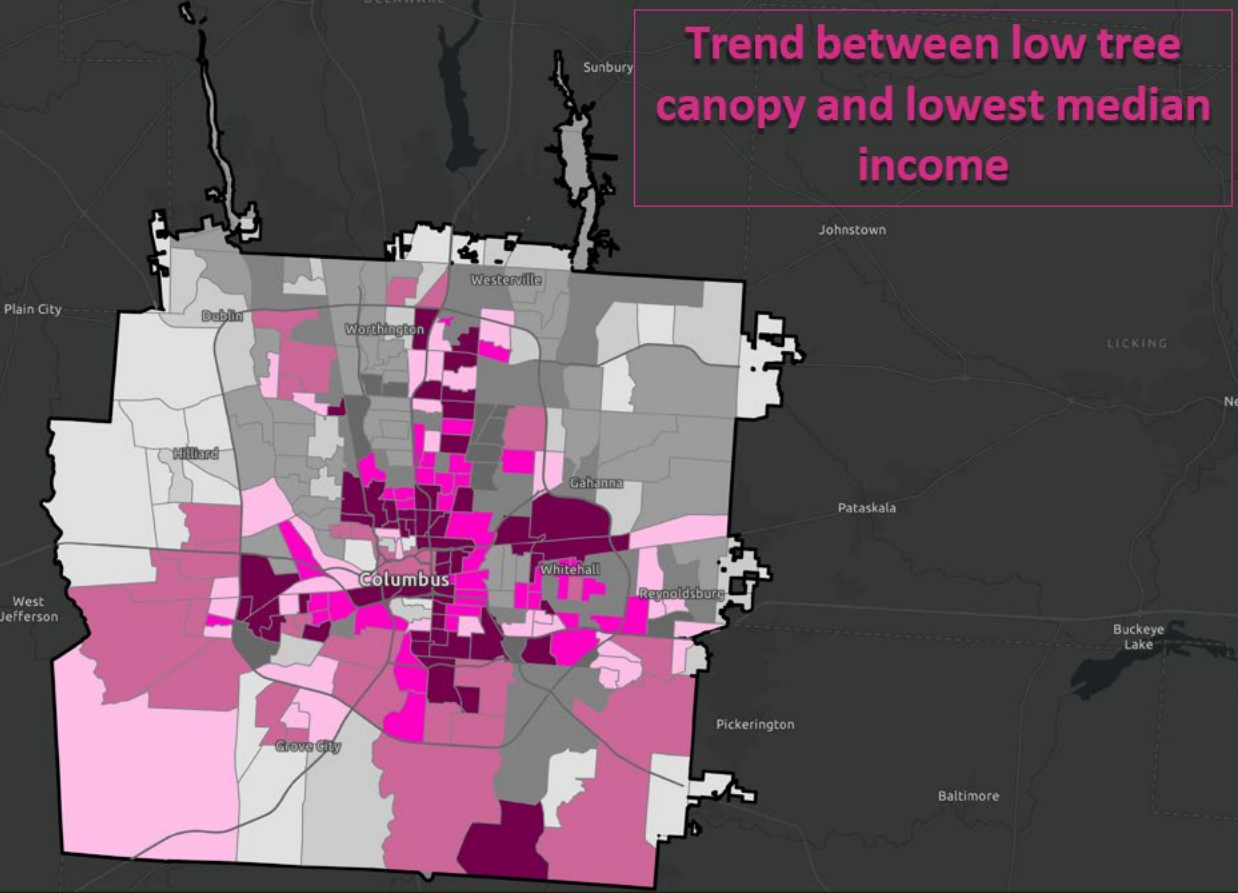
Overarching results



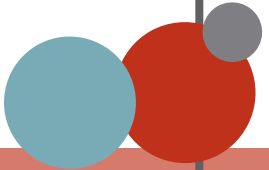
Overarching results



Trend between low tree canopy and lowest median income



Trees and Social Change – Existing Tree Canopy and Median Income



Jurisdiction Fact Sheets: Examples

PRAIRIE, OHIO 2011-2021 Tree Canopy Summary

Community & County Overview

The Township of Prairie has an estimated population of 17,406 residents and encompasses an area of 18.73 square miles. In Prairie, 15.9% of land is covered by tree canopy compared to 23.9% of land in Franklin County¹.

Trees provide essential ecosystem services. Franklin County's trees save \$10 million by absorbing stormwater, \$8 million by storing carbon, and \$15 million of avoided healthcare costs from air pollution².

Prairie
304,400
Estimated total trees

+273 Acres
Area change in tree canopy from new plantings & incremental growth
(463.8 acres of gain - 190.7 acres of loss).

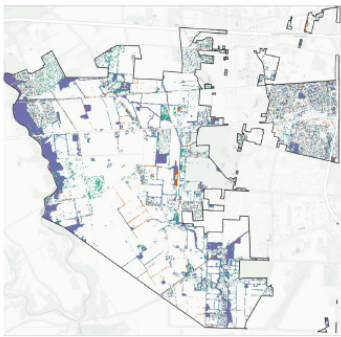
2.3%
Change in tree canopy area

Franklin County
12.8 Million
Estimated total trees

+9,712 Acres
Area change in tree canopy from new plantings & incremental growth
(19,202 acres of gain - 9,490 acres of loss).

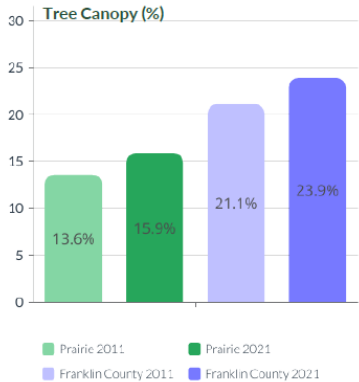
+2.8%
Change in tree canopy area

2011-2021 Tree Canopy Change Map



Legend
■ No Change
■ Gain
■ Loss

Key Terms
 Tree canopy is defined as the layer of leaves, branches, and stems that provide tree coverage of the ground when viewed from above.
● Existing Tree Canopy - The amount of tree canopy present when viewed from above using aerial or satellite imagery.
● Possible Tree Canopy - Vegetated; Grass or shrub area that is theoretically available for the establishment of tree canopy.
● Change in Tree Canopy - the percentage point change between the two time periods.



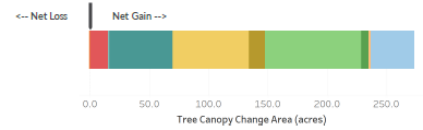
¹ Population and area mileage from 2021 Mid-Ohio Regional Planning Commission and Franklin County Engineer's Office data. ² Ecosystem services calculations are based on the Tree Eco methodology and values for Franklin County, Nowak, D.J., 2021. Understanding i-Tree: 2021 summary of programs and methods. US Department of Agriculture, Forest Service, Northern Research Station.

PRAIRIE, OHIO 2011-2021 Tree Canopy Summary

Canopy Change by Land Use

The Township of Prairie gained the most canopy on Rural Residential land use and had a net gain in canopy across all land use categories.

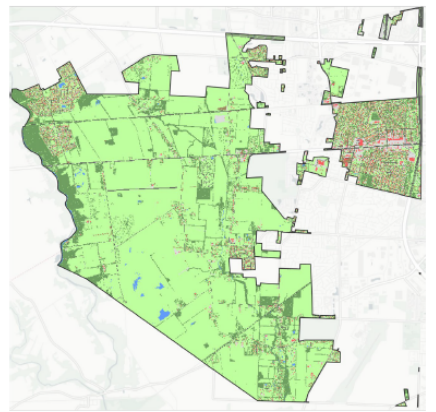
- Agriculture
- Industrial
- Mixed Use
- Municipal
- Parks and Open Space
- ROW
- Rural Residential
- Suburban Residential
- Urban Residential
- Vacant and Other



Possible Tree Canopy

In Prairie, 74% of land could be planted with additional trees, compared to 48% in Franklin County. Tree canopy is one of seven classifications from the high-resolution land cover map (right) that forms the foundation of this project. In this assessment, any areas with no trees, buildings, roads, or bodies of water are considered Possible Tree Canopy and represent locations in which trees could theoretically be established without having to remove paved surfaces.

2021 Land Cover Map



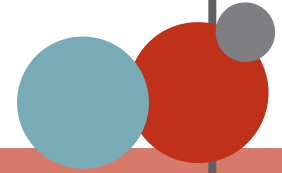
Land Cover 2021
■ Tree Canopy
■ Grass/Shrub
■ Bare Soil
■ Water
■ Buildings
■ Roads/Railroads
■ Other Paved

Environmental Equity

- **Tree Canopy:** The extent of canopy cover in Prairie is 15.9% of its total land area while it is 23.9% for Franklin County.
- **Temperature:** The average high in °F for Prairie is 88 (max. 101), and 93 (max. 107) for Franklin County in 2021. Combining this information with tree canopy values allows us to understand the role trees could play in reducing heat islands.
- **Asthma Rate:** Average asthma rates per 1,000 residents in Prairie are 10.00 while this value is 9.93 for Franklin County. Combining this information with tree canopy values allows us to understand the role trees could play in removing pollutants from the air.
- **Income:** Prairie has a median household income of \$48,819, while Franklin County's is \$59,097. Combining this information with tree canopy values allows us to understand the role trees could play in promoting equity for socio-economically vulnerable groups.

Recommendations

- Preserving existing tree canopy is the most effective means for securing future tree canopy, as loss is an event but gain is a process.
- Plant new trees in areas where tree canopy is low or in locations where there has been tree canopy removed to help grow canopy.
- Refer to the full Tree Canopy Assessment and corresponding geographic data available by Franklin County and its jurisdictions to help manage trees.



Jurisdiction Fact Sheets: Examples

MIFFLIN, OHIO 2011-2021 Tree Canopy Summary

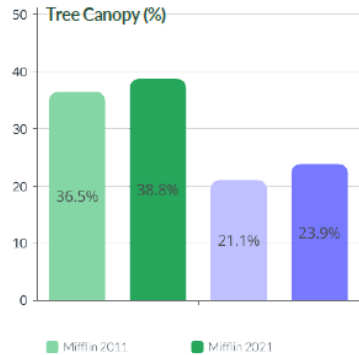
Community & County Overview

Mifflin Township has an estimated population of 2,625 residents and encompasses an area of 1.99 square miles. In Mifflin, 38.8% of land is covered by tree canopy compared to 23.9% of land in Franklin County¹.

Trees provide essential ecosystem services. Franklin County's trees save \$10 million by absorbing stormwater, \$8 million by storing carbon, and \$15 million of avoided healthcare costs from air pollution².

<p>Mifflin 83,700 Estimated total trees</p> <p>+30 Acres Area change in tree canopy from new plantings & incremental growth (90.6 acres of gain - 60.6 acres of loss).</p> <p>+2.3% Change in tree canopy area</p>	<p>Franklin County 12.8 Million Estimated total trees</p> <p>+9,712 Acres Area change in tree canopy from new plantings & incremental growth (19,202 acres of gain - 9,490 acres of loss).</p> <p>+2.8% Change in tree canopy area</p>
---	---

2011-2021 Tree Canopy Change Map



Key Terms

Tree canopy is defined as the layer of leaves, branches, and stems that provide tree coverage of the ground when viewed from above.

Existing Tree Canopy - The amount of tree canopy present when viewed from above using aerial or satellite imagery.

Possible Tree Canopy - Vegetated: Grass or shrub area that is theoretically available for the establishment of tree canopy.

Change in Tree Canopy - the percentage point change between the two time periods.

¹ Population and area mileage from 2021 Mid-Ohio Regional Planning Commission and Franklin County Engineer's Office data. ²Ecosystem services calculations are based on the iTree Eco methodology and values for Franklin County. Nowak, D.J., 2021. Understanding i-Tree: 2021 summary of programs and methods. US Department of Agriculture, Forest Service, Northern Research Station.

MIFFLIN, OHIO 2011-2021 Tree Canopy Summary

Canopy Change by Land Use

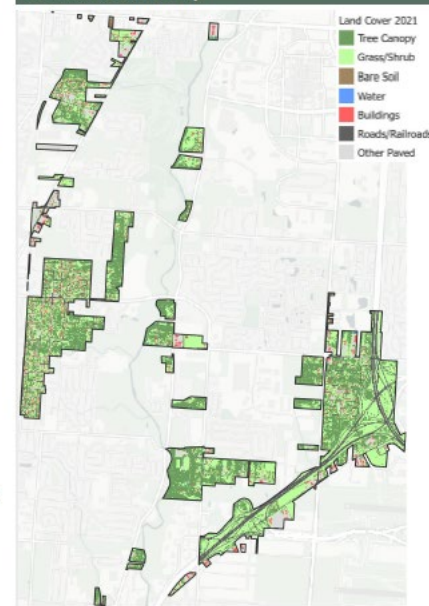
The Township of Mifflin gained the most canopy in the Right of Way (ROW) and has a net loss of canopy in Mixed Use land use.



Possible Tree Canopy

In Mifflin, 36% of land could be planted with additional trees, compared to 48% in Franklin County. Tree canopy is one of seven classifications from the high-resolution land cover map (right) that forms the foundation of this project. In this assessment, any areas with no trees, buildings, roads, or bodies of water are considered Possible Tree Canopy and represent locations in which trees could theoretically be established without having to remove paved surfaces.

2021 Land Cover Map



Environmental Equity

- Tree Canopy:** The extent of canopy cover in Mifflin is 38.8% of its total land area while it is 23.9% for Franklin County.
- Temperature:** The average high in °F for Mifflin is 94 (max. 101), and 93 (max. 107) for Franklin County in 2021. Combining this information with tree canopy values allows us to understand the role trees could play in reducing heat islands.
- Asthma Rate:** Average asthma rates per 1,000 residents in Mifflin are 11.79 while this value is 9.93 for Franklin County. Combining this information with tree canopy values allows us to understand the role trees could play in removing pollutants from the air.
- Income:** Mifflin has a median household income of \$36,940, while Franklin County's is \$59,097. Combining this information with tree canopy values allows us to understand the role trees could play in promoting equity for socio-economically vulnerable groups.

Recommendations



Preserving existing tree canopy is the most effective means for securing future tree canopy, as loss is an event but gain is a process.



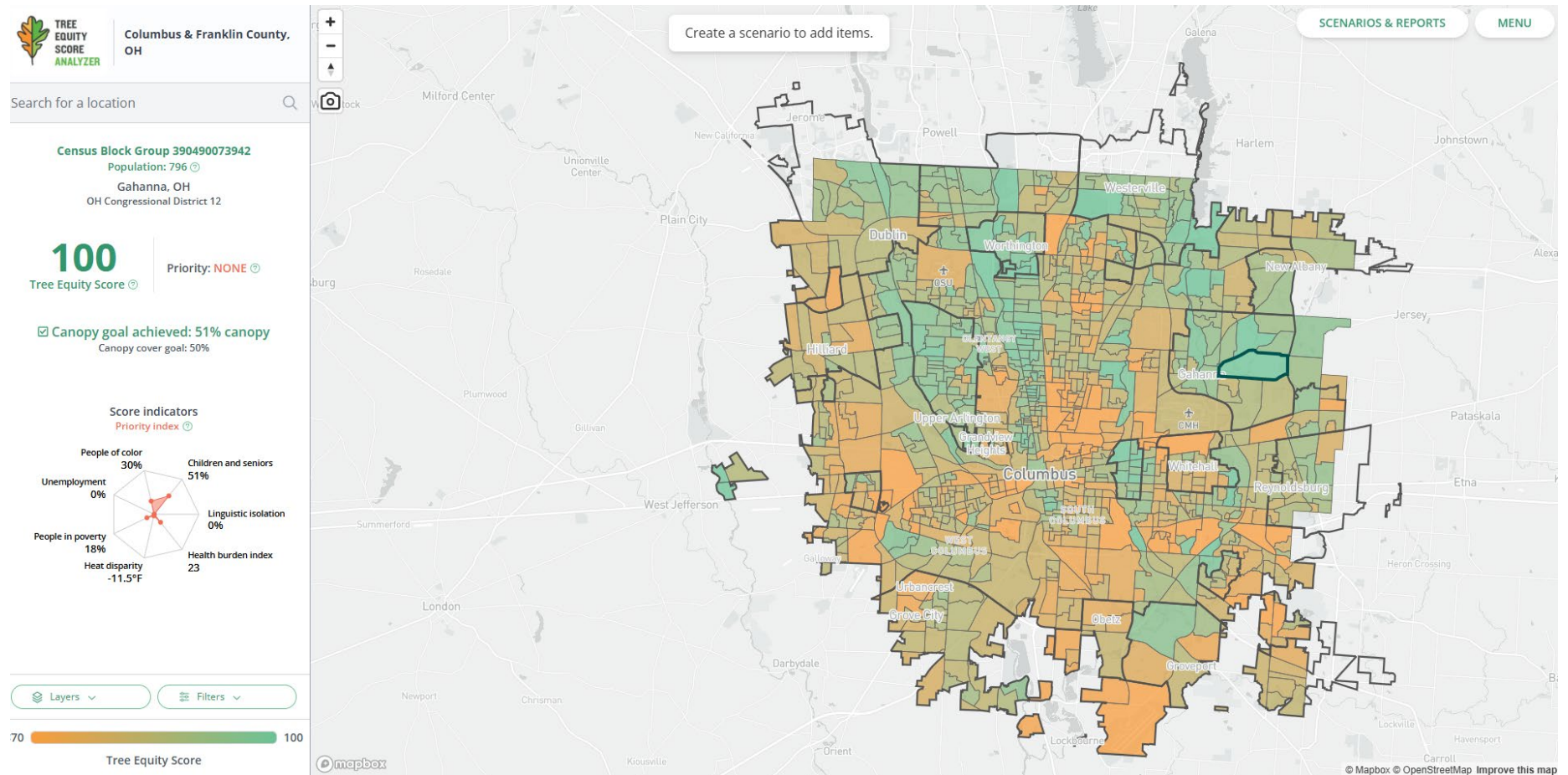
Plant new trees in areas where tree canopy is low or in locations where there has been tree canopy removed to help grow canopy.



Refer to the full Tree Canopy Assessment and corresponding geographic data available by Franklin County and its jurisdictions to help manage trees.



Tree Equity Score Analyzer Tool





Thank you!

Jennie McAdams: jenniemcadams@franklincountyohio.gov
John Bowers: jebowers@columbus.gov



THE CITY OF
COLUMBUS

ANDREW J. GINTHER, MAYOR

RECREATION AND PARKS
DEPARTMENT

Franklin County
Public Health



AGENDA



- 9:30 a.m.** **Welcome & Introductions** – *Brandi Whetstone, Director of Sustainability, MORPC*
- 9:40 a.m.** **Featured Presentation: Columbus and Franklin County Tree Canopy Assessment** –
Jennie McAdams, Franklin County Public Health, and John Bowers, Columbus Recreation and Parks
- 10:00 a.m.** **MORPC Program Updates** – *Brandi Whetstone*
- Water Resources (208 planning & Regional Water Study) – *Edwina Teye*
 - Air Monitoring – *JR Diaz-Hernandez*
 - Charging & Fueling Infrastructure Grant Next Steps – *Brian Filiatraut*
 - Central Ohio Climate Action Plan – *Brian Filiatraut*
 - Government Affairs & Policy – *Kyle Probert*
- 10:20 a.m.** **Regional Sustainability Agenda** – *Brandi Whetstone & Karina Peggau*
- 10:35 a.m.** **Priority Topics for 2025** – *Brandi Whetstone*
- 10:45 a.m.** **Member Updates** – *All*
- 11:00 a.m.** **Adjourn**

Water Resources Updates

Dr. Edwina Teye

Sr. Water & Natural Resources Program Manager

December 2024



MID-OHIO REGIONAL
MORPC
PLANNING COMMISSION

WATER RESOURCES



Areawide Water Quality Management Planning

- MORPC considering designation as an Areawide Planning Agency for Central Ohio
- Ad-hoc committee to review and provide input on operational procedures, structure, and dispute resolution process related to sewer service.

Regional Water Study

- Covers MORPC's 15 counties
- Examines existing and future water supply and identify strategies to conserve and reuse water
- Project concludes end of Feb. 2025
- Scan QR code for past webinars
- Questions? – eteye@morpc.org





Air Quality Program Updates

JR Mauro Diaz-Hernandez
Air Quality & Sustainability Program Coordinator
December 2024



MID-OHIO REGIONAL
MORPC
PLANNING COMMISSION



MORPC

CLEAN PROJECT UPDATES
(Community Led Enhanced Air Quality Network)

SENSOR UPDATES



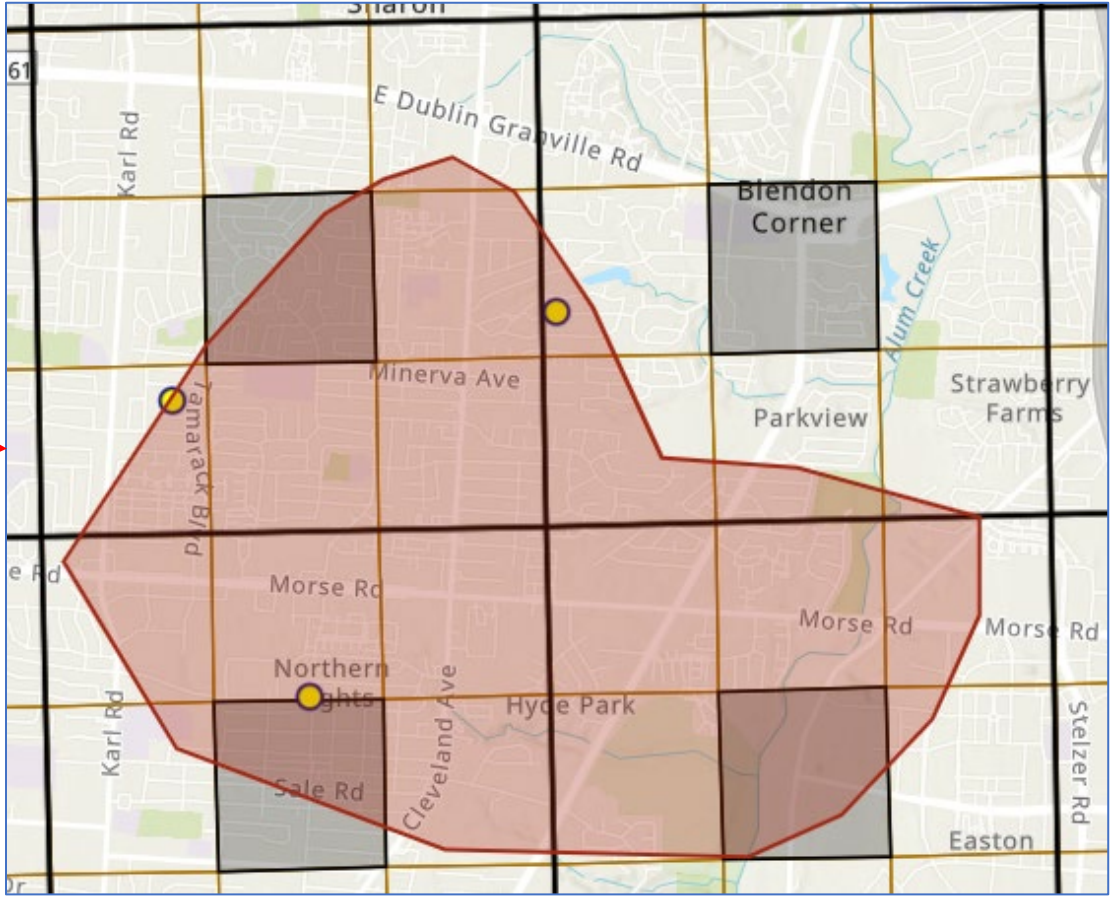
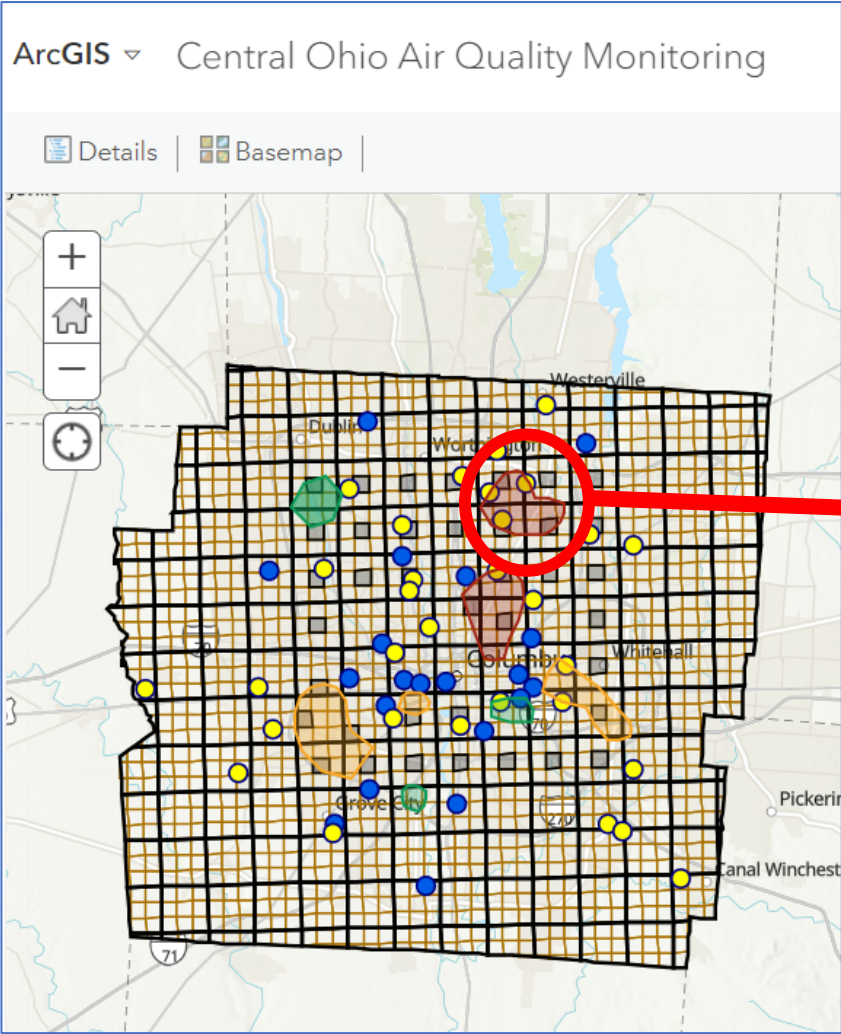
- Sensors are being deployed
 - 21 installed within last 3 weeks; 14 to be installed by end of December
 - 40 total sensors but reserving 5 for backups
 - Timeline pushed back to accommodate site selection
 - Priority areas identified and best fit model being utilized



SENSOR UPDATES



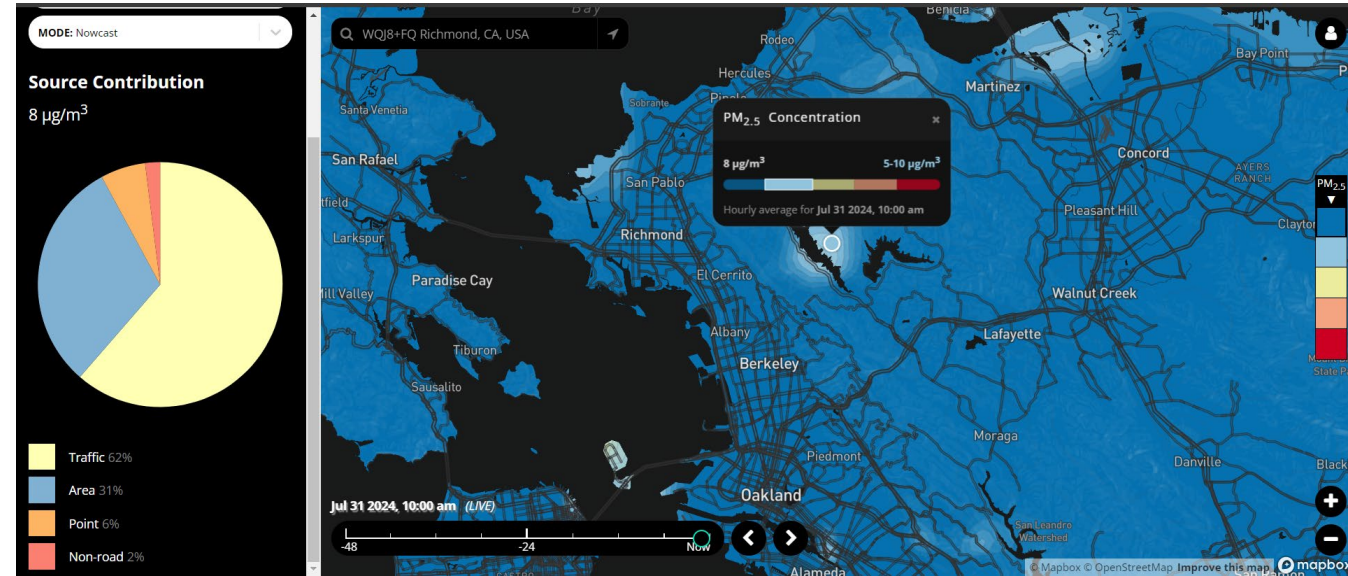
MORPC



RAMBOLL MODELING



- Ramboll Americas Engineering Solutions, Inc. ("Ramboll")
- Shair model will incorporate data from our sensors to create a better picture of pollution sources in neighborhoods
- [Example of Shair dashboard in CA](#)



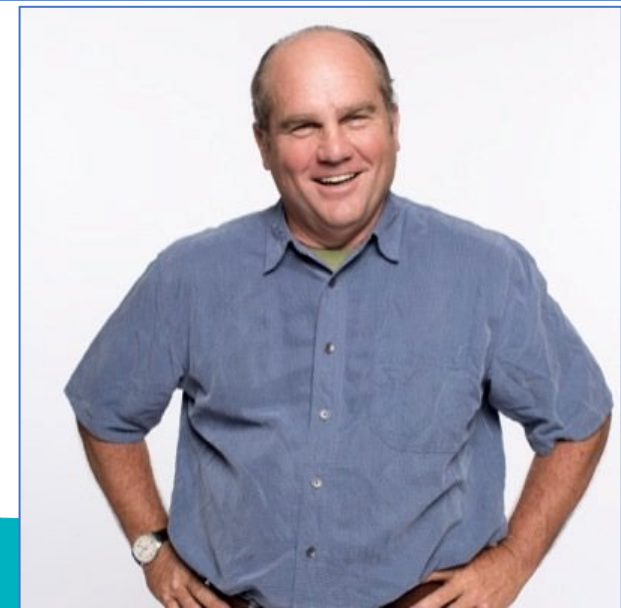
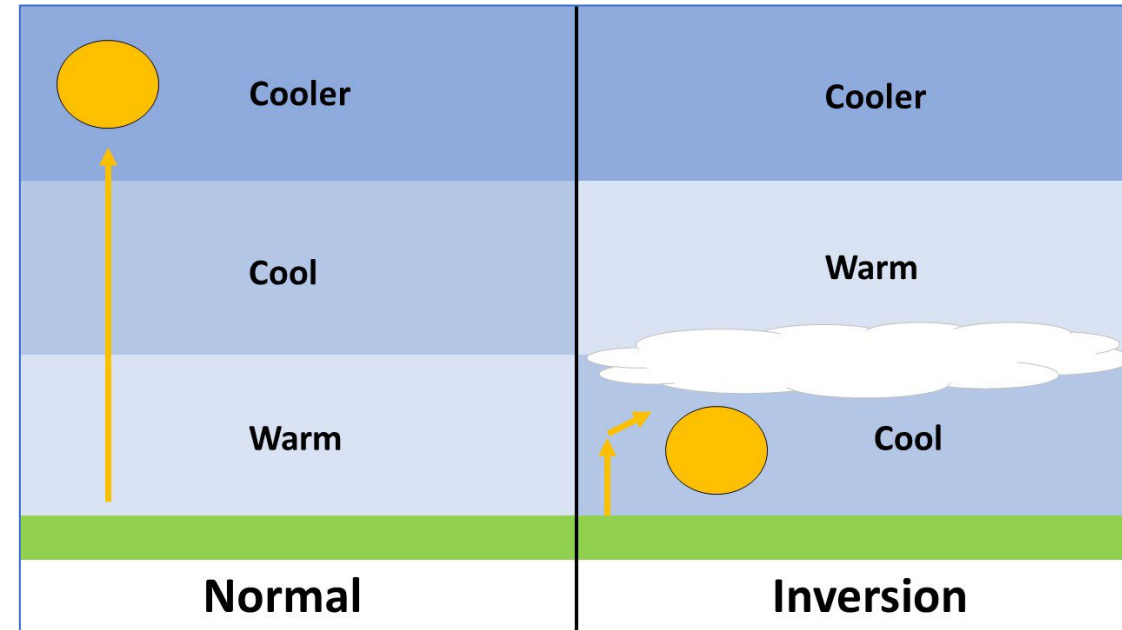
NEXT STEPS

- Community outreach events (libraries, community centers, neighborhood association meetings...)
- Creation of digital displays at public locations
- Ongoing maintenance



AS WE ENTER THE COLDER MONTHS...

- AQ issues can still happen
 - Colder weather can trap pollutants closer to the ground
 - Sign up for AQ alerts
- Heating systems, wood burning stoves can release lots of particulate matter
 - If using a wood burning stove: make sure firewood is seasoned
 - Change furnace filters regularly!



Energy Updates: EV Charging Grant and Central Ohio Climate Action Plan

Brian Filiatraut
Sr. Energy & Sustainability Program Manager
December 2024



MID-OHIO REGIONAL
MORPC
PLANNING COMMISSION

CFI R1B AWARD

Charging & Fueling Infrastructure (CFI) Grant | USDOT FHWA



MORPC

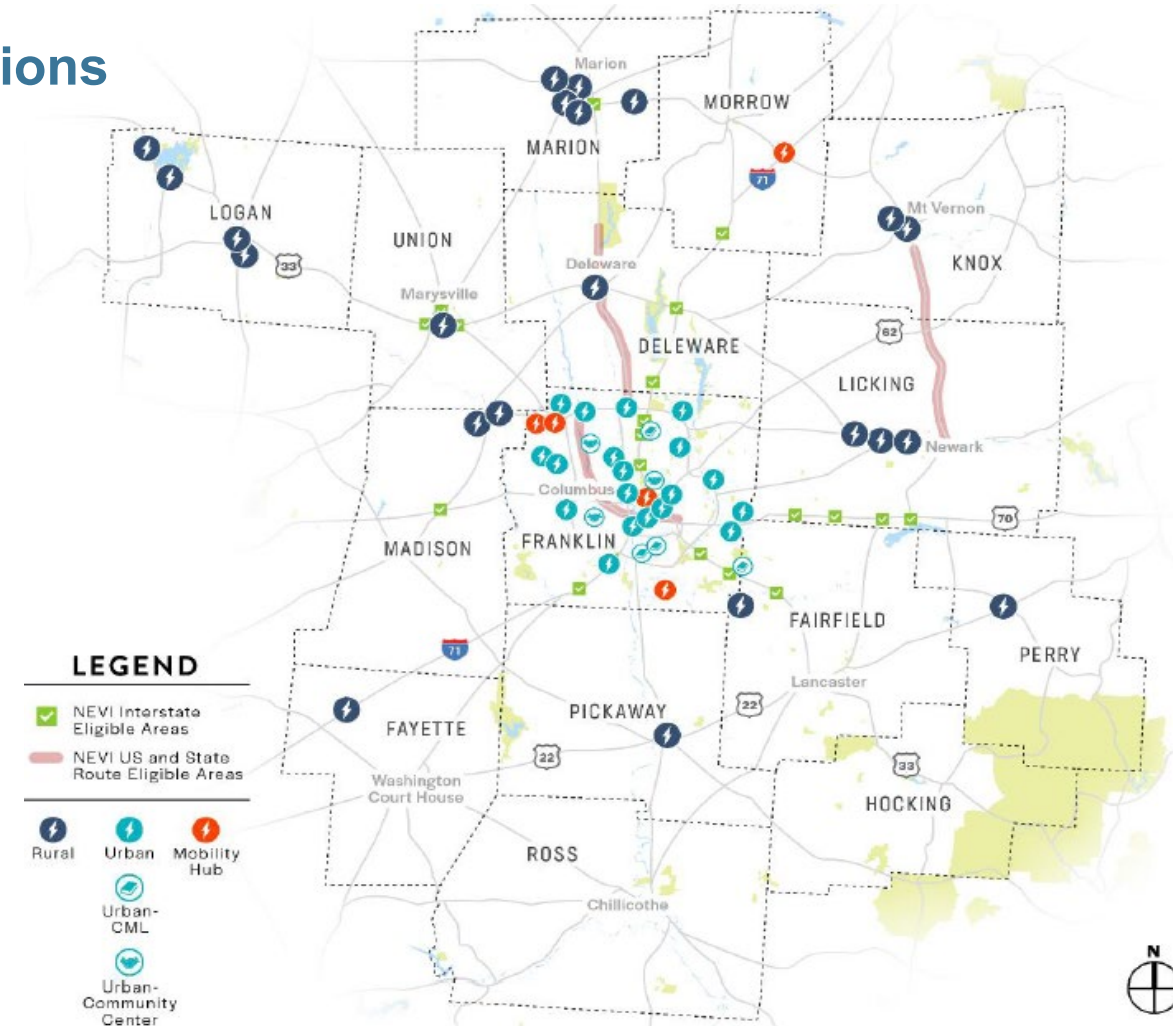
MORE EVS

Mid-Ohio Regional Equity for Electric Vehicle Stations

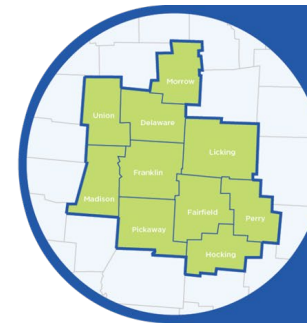
- \$15M Federal award + \$6.9M regional investment
 - Mobility hub locations
 - Urban underserved communities
 - Rural underserved communities
- 62 confirmed sites across 13 counties
 - 406 charging ports → ~80% level 2; ~20% DCFC
 - Additional 50 curbside ports in City of Columbus
- Workforce Development
 - Equip the region with clean energy workforce

For more information, please contact Brian Filiatraut,
bfiliatraut@morpc.org

CFI Round 1B MORE EVS Site Locations



PRELIMINARY COCAP REGIONAL GREENHOUSE GAS INVENTORY (R-GHGI)



Central Ohio Climate Action Plan

A HEALTHY AND JUST FUTURE
FOR CENTRAL OHIO

[Central Ohio Climate Action Plan Website](#)

- More in-depth, comprehensive inventory
- PCAP R-GHGI Scope
 - Only 4: Transportation, Residential, Commercial, & Industrial
- COCAP R-GHGI Scope
 - 10 Sectors
 - Transportation, Residential, Commercial, & Industrial
 - *Water & Wastewater, *Electrical Line Loss
 - #Natural Gas Process & Fugitive Emissions,
 - **Solid Waste, Hydrofluorcarbon & Refrigerants, & Agriculture**
 - Working Lands: trees, and related landscape changes due to development

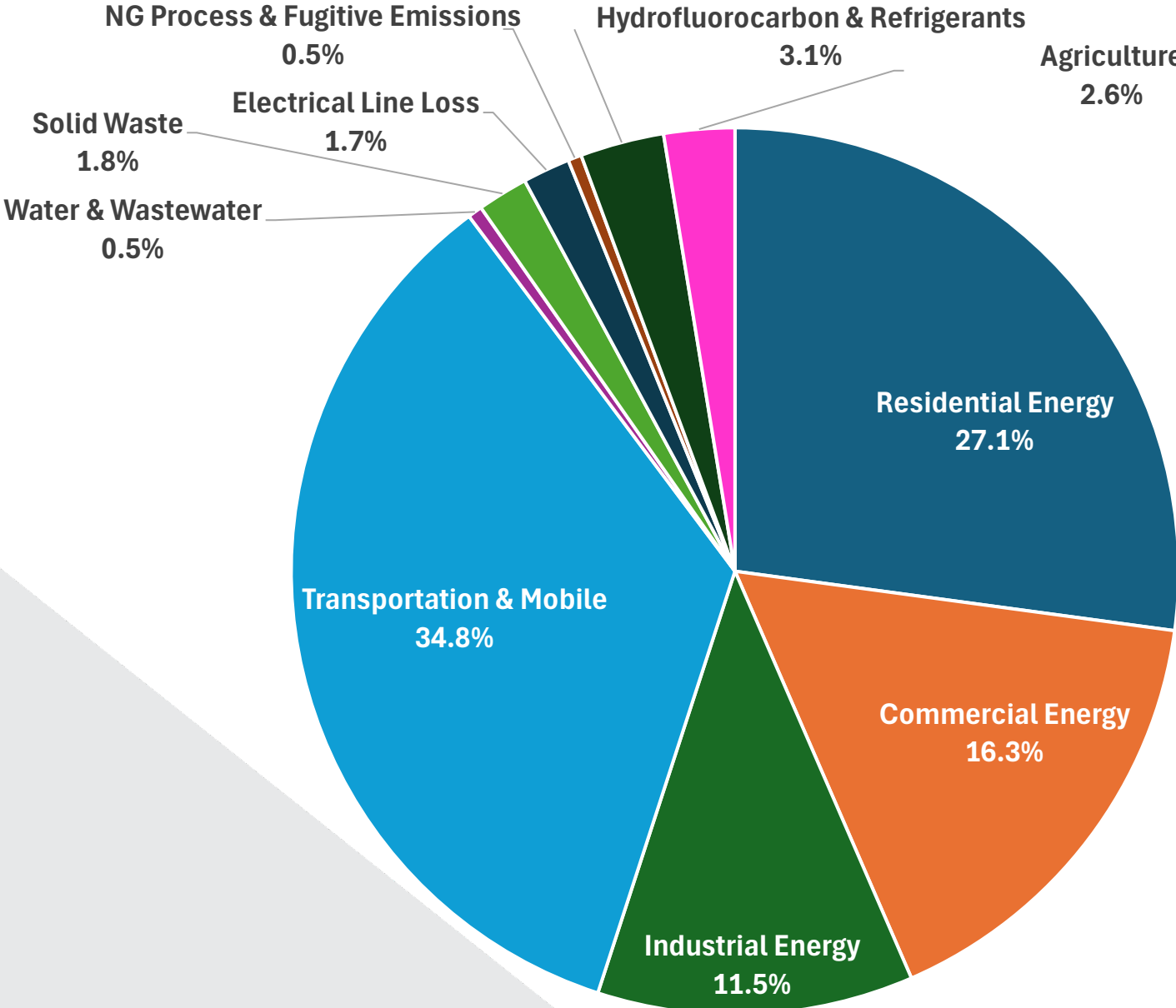
* = previously baked into PCAP Residential, Commercial, & Industrial sectors

= partially baked into PCAP Residential, Commercial, & Industrial sectors

█ = completely new

PRELIMINARY COCAP R-GHGI

By Sector



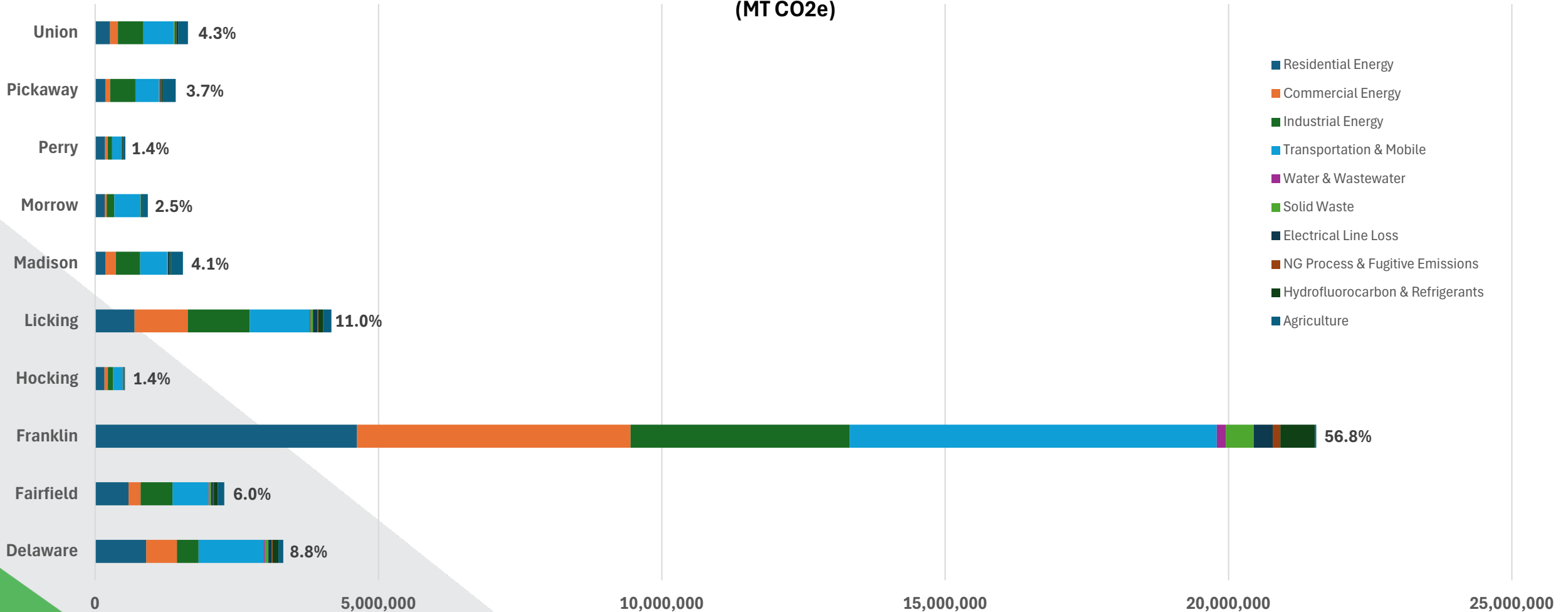
**10-County MSA Total GHGe
By Sector**

37,906,450 MT CO2e

PRELIMINARY COCAP R-GHGI

By County by Sector

10-County MSA County Total Emissions (MT CO₂e)





MORPC

GOVERNMENT AFFAIRS & POLICY UPDATE

Kyle Probert
Public Policy Coordinator, MORPC

LEGISLATIVE UPDATE

Kyle Probert – Public Policy Coordinator



MORPC

POST-ELECTION RECAP:

Congress

- **GOP to control House and Senate by narrow margins**
 - **Senate requires 60 votes to break filibuster on most legislation**
- **Senator Sherrod Brown defeated by Bernie Moreno**
- **Senator J.D. Vance elected VP**
 - **Vacancy to be filled by Governor DeWine**
 - **Mike Carey, Jane Timken, Matt Dolan, others**
- **All Central Ohio incumbents won**
- **New Congressman in OH-02, Dave Taylor replacing Brad Wenstrup (retirement)**
- **Federal budget deadline December 20th, CR through March likely**
- **Re-authorization of 2017 Tax Cuts a top GOP priority**



LEGISLATIVE UPDATE

Kyle Probert – Public Policy Coordinator



MORPC

WHAT TO EXPECT IN 2025...

From the federal government:

- **Programs and grants created under IRA, IIJA are likely to be at risk of sunset, elimination, and/or clawback.**
- **Reduced emphasis from federal government on climate, equity**
- **Regulatory reform, tax and spending cuts**

From MORPC:

- **A new Public Policy Agenda reaffirming our guiding principles**
- **Strategic coordination with our allies to achieve positive outcomes**

KYLE PROBERT, MPA

Public Policy Coordinator

Mid-Ohio Regional Planning Commission

T: 614.233.4162 | kprobert@morpc.org

111 Liberty Street, Suite 100

Columbus, OH 43215



MID-OHIO REGIONAL
MORPC
PLANNING COMMISSION



LEGISLATIVE UPDATE

Kyle Probert – Public Policy Coordinator



MORPC

POST-ELECTION RECAP:

Statehouse

- **House: 65-34 GOP Majority**
 - Can override vetoes, but cannot pass emergency legislation without Democrats
 - State Sen. Stephanie Kunze (R-Dublin) defeated in House seat bid
- **Senate: 24-9 GOP Majority**
- **Senate President Matt Huffman expected to succeed Speaker Stephens**
- **HB 79 (Energy Efficiency Program) received 2nd Senate hearing**



AGENDA



- 9:30 a.m.** **Welcome & Introductions** – *Brandi Whetstone, Director of Sustainability, MORPC*
- 9:40 a.m.** **Featured Presentation: Columbus and Franklin County Tree Canopy Assessment** –
Jennie McAdams, Franklin County Public Health, and John Bowers, Columbus Recreation and Parks
- 10:00 a.m.** **MORPC Program Updates** – *Brandi Whetstone*
- Water Resources (208 planning & Regional Water Study) – *Edwina Teye*
 - Air Monitoring – *JR Diaz-Hernandez*
 - Charging & Fueling Infrastructure Grant Next Steps – *Brian Filiatraut*
 - Central Ohio Climate Action Plan – *Brian Filiatraut*
 - Government Affairs & Policy – *Kyle Probert*
- 10:20 a.m.** **Regional Sustainability Agenda** – *Brandi Whetstone & Karina Peggau*
- 10:35 a.m.** **Priority Topics for 2025** – *Brandi Whetstone*
- 10:45 a.m.** **Member Updates** – *All*
- 11:00 a.m.** **Adjourn**

Regional Sustainability Agenda Updates

December 2024



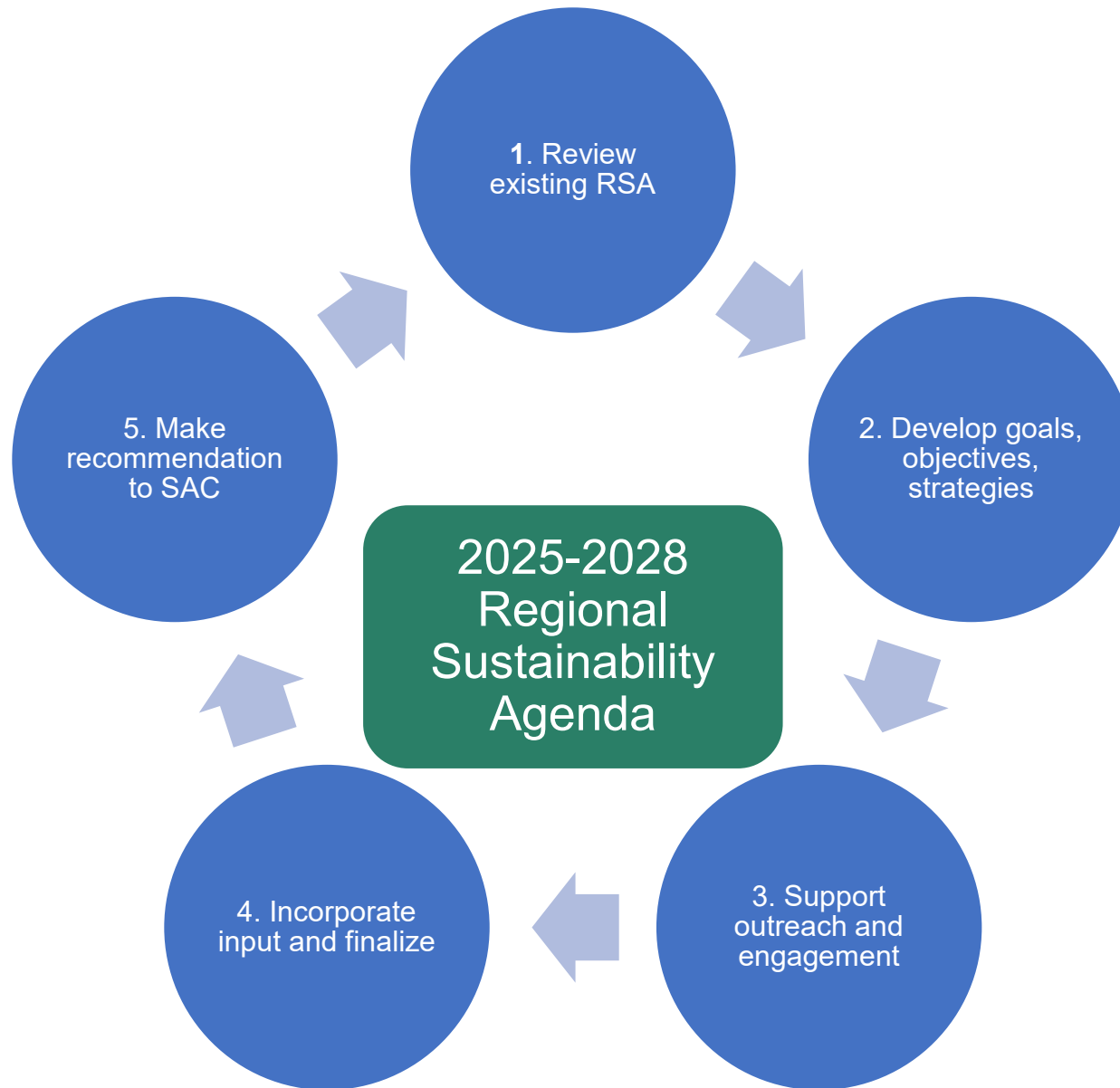
MID-OHIO REGIONAL
MORPC
PLANNING COMMISSION

SUBCOMMITTEE MEMBERS



- Mike Shelton, Chair, OSU Sustainability Institute
- Erin Beck, City of Columbus
- Elizabeth Ellman, City of Bexley
- Emily Goliver, City of Dublin
- Scott Perry, SWACO
- Kristy Hawthorne, Licking Soil and Water Conservation District
- Quentin Platt, City of Mount Vernon





Subcommittee Purpose

Develop a comprehensive 2025-2028 Regional Sustainability Agenda for the 15-County region.

Additional Activities and Inputs-

- SAC and MORPC leadership will provide input and guidance.
- MORPC data and sustainability teams will gather and analyze data to develop a baseline for each objective and create informed targets for the 4-year timeframe.

GOAL 1



MORPC

	Objectives
Goal 1: Improve air quality and reduce climate change impacts to protect public health and the environment.	1.1 Reduce per capita vehicle miles traveled.
	1.2 Increase alternative fuel vehicles and infrastructure.
	1.3 Reduce energy consumption across all sectors.
	1.4 Increase local clean energy generating capacity.
	1.5 Reduce regional greenhouse gas pollution.
	1.6 Increase the number of days that meet federal standards for ozone and fine particulate matter pollution.

GOAL 2



MORPC

Goal 2: Protect and restore natural resources to support a healthy and resilient region.

Objectives

- 2.1** Reduce the amount of solid waste disposed of in the landfill.
- 2.2** Reduce water consumption across all sectors.
- 2.3** Improve water quality in Central Ohio watersheds.
- 2.4** Increase land area designated for conservation of biodiversity and natural resources.
- 2.5** Support agricultural best management practices that enhance production and environmental quality.

GOAL 3



MORPC

Goal 3: Improve quality of life for all residents by advancing healthy, connected, and equitable communities.

Objectives

3.1 Improve transportation and mobility safety for all residents.

3.2 Increase and enhance transportation options for all users.

3.3 Increase access to parks, greenspace, and regional trails.

3.4 Reduce household energy cost burden.

3.5 Reduce the rate of elevated blood lead levels among children.

3.6 Increase access to and knowledge about local foods and agricultural products.

GOAL 4



MORPC

Goal 4: Advance sustainable, attainable, and equitable economic growth and development.

Objectives

4.1 Increase support for businesses to develop and execute sustainability policies and practices.

4.2 Prioritize development in locations along existing infrastructure and encourage density.

4.3 Increase availability of affordable housing options near transit or job centers.

4.4 Increase employment and availability of green jobs.

4.5 Protect working agricultural lands.

GOAL 5 (new!)



MORPC

	Objectives
Goal 5: Create communities that are aware, prepared, and resilient to climate impacts.	5.1 Increase preparedness for extreme weather events.
	5.2 Increase community resilience to flooding, severe weather, and extreme temperatures.
	5.3 Create more resilient infrastructure and built environments.

RSA NEXT STEPS



MORPC

- December 2024 – January 2025
 - Review strategies
 - Connect current and upcoming activities to RSA
- January 2025
 - Finalize draft
 - Open draft RSA for stakeholder review
- February 2025
 - Review feedback and revise draft
- March 2025
 - Present findings and draft to Sustainability Advisory Committee
- April 2025
 - MORPC Commission Adoption



Scan QR code-
Sustainable2050
member survey to inform
strategies in the RSA

AGENDA



- 9:30 a.m.** **Welcome & Introductions** – *Brandi Whetstone, Director of Sustainability, MORPC*
- 9:40 a.m.** **Featured Presentation: Columbus and Franklin County Tree Canopy Assessment** –
Jennie McAdams, Franklin County Public Health, and John Bowers, Columbus Recreation and Parks
- 10:00 a.m.** **MORPC Program Updates** – *Brandi Whetstone*
- Water Resources (208 planning & Regional Water Study) – *Edwina Teye*
 - Air Monitoring – *JR Diaz-Hernandez*
 - Charging & Fueling Infrastructure Grant Next Steps – *Brian Filiatraut*
 - Central Ohio Climate Action Plan – *Brian Filiatraut*
 - Government Affairs & Policy – *Kyle Probert*
- 10:20 a.m.** **Regional Sustainability Agenda** – *Brandi Whetstone & Karina Peggau*
- 10:35 a.m.** **Priority Topics for 2025** – *Brandi Whetstone*
- 10:45 a.m.** **Member Updates** – *All*
- 11:00 a.m.** **Adjourn**

Thank you!

Brandi Whetstone, LEED Green Associate

Director of Sustainability

Mid-Ohio Regional Planning Commission

T: 614.233.4174

bwhetstone@morpc.org

111 Liberty Street, Suite 100

Columbus, OH 43215

