



# Greenways Planning Studio Regional Trail Vision Updates



MORPC

# Central Ohio Greenways Progress Report

The region is entering an era of transformational trail building acceleration. Major accomplishments in 2024 include:

- regional collaboration resulting in over a **quarter of the COG Vision** within Franklin County funded for construction by 2030;
- the **expansion of the COG Vision to 15 counties** and identifying over 300 more proposed miles of trails for Vision expansion consideration;
- the **launch of the Trail Town Working Group**, whose success was recognized with the 2024 Regional Collaborative Achievement in Sustainability Award at the MORPC Summit on Sustainability;
- the **completion three special projects** including the COG Wayfinding Strategy, Detours & Closures Guidelines, and Mapping Natural Assets; and
- the **launch of the Greenways Planning Studio (GPS)**, an effort to bring greenspace to the forefront of development in Central Ohio by identify pathways that bring innovative visions to reality.



MORPC

# Central Ohio Greenways Progress – Franklin County

## LINKUS advances COG

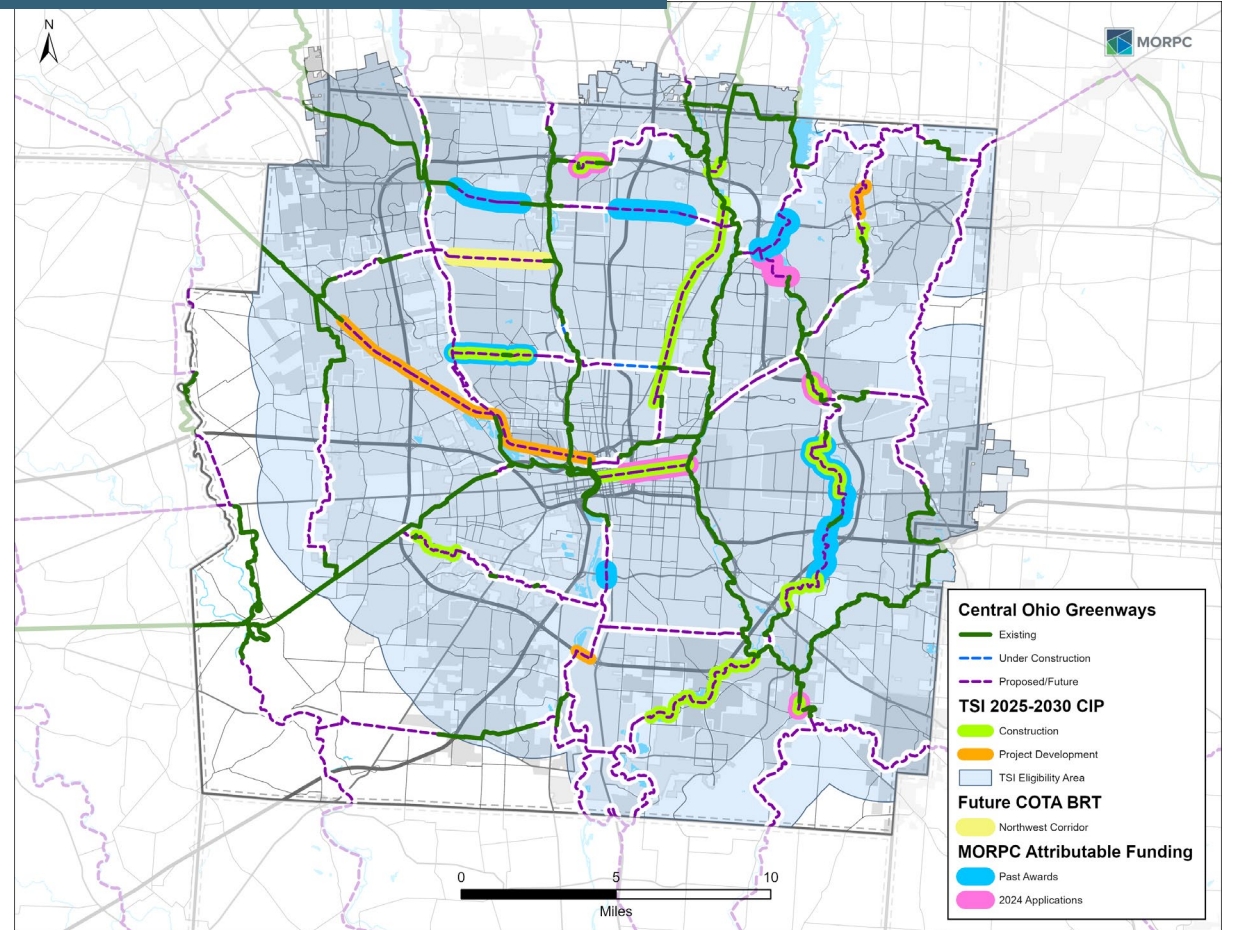
- 189 miles of proposed COG trails in the COTA Service Area (CSA)
- 175 of these are eligible for TSI funding (i.e., within 3-miles of a fixed-route transit stop)
- 37 miles (20%) are in the 2025-2030 TSI CIP

## MORPC AFC Advances COG

- 15 miles (8%) have received 2020 or 2022 Attributable Funding awards
  - 5 of these are also in the TSI CIP
- 5.3 miles are in outstanding 2024 applications (3.7-mi. overlap w/TSI)

## COMBINED COG ADVANCEMENT

- TSI and past AF awards have funded 50 miles, or 26%, of the COG vision in the CSA for construction or project development by 2030.
  - **40 miles, or 21%, are specifically slated for construction by 2030**

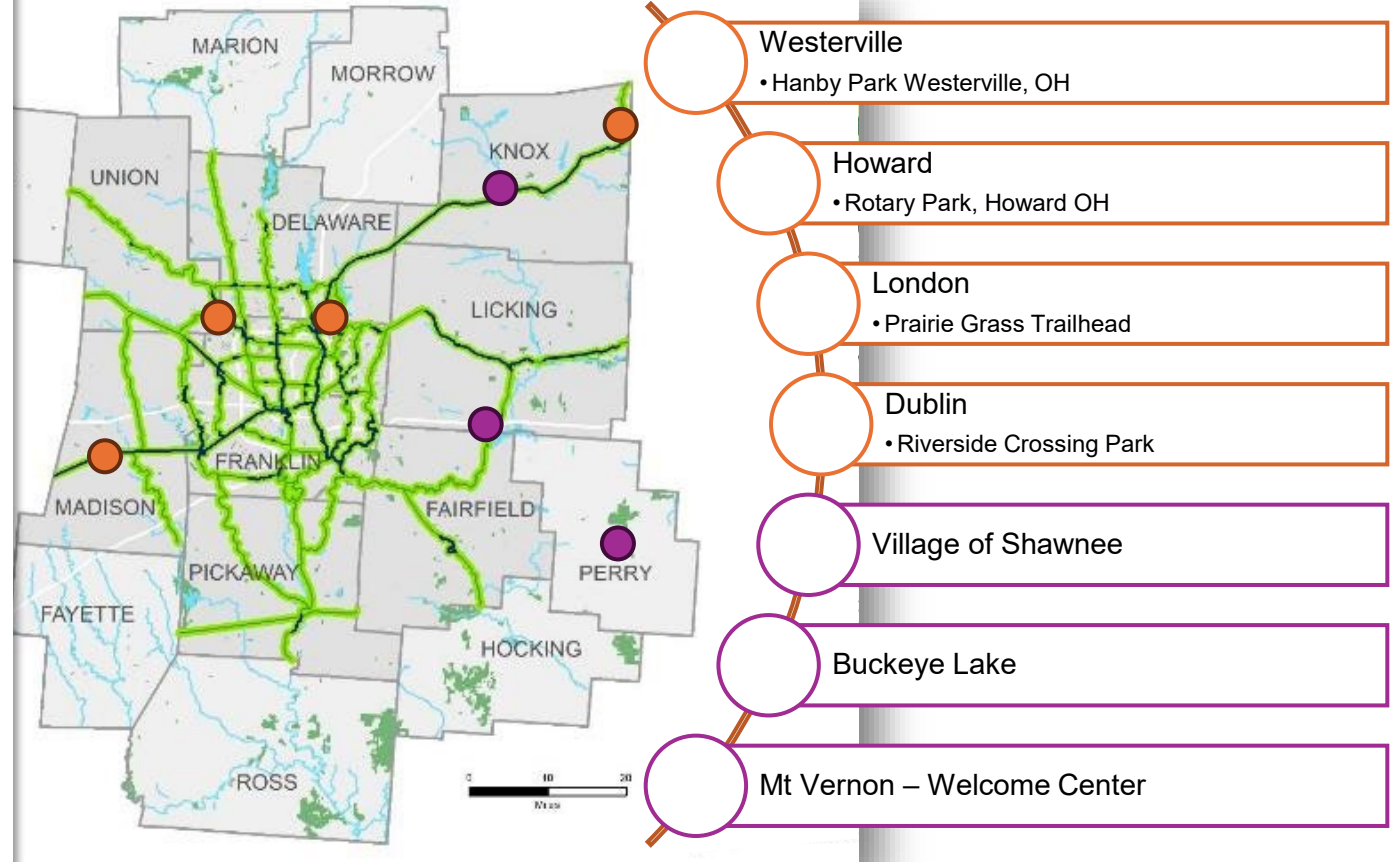


**MORPC**



# Gateways of Regional Significance

*A Gateway of Regional Significance is a premier trailhead located along a Trail of Regional Significance that provides and/or connects trail users to amenities, services, and information necessary to navigate the trail system.*



**MORPC**