



# MPO BOUNDARY EXPANSION

Maria Schaper, MORPC



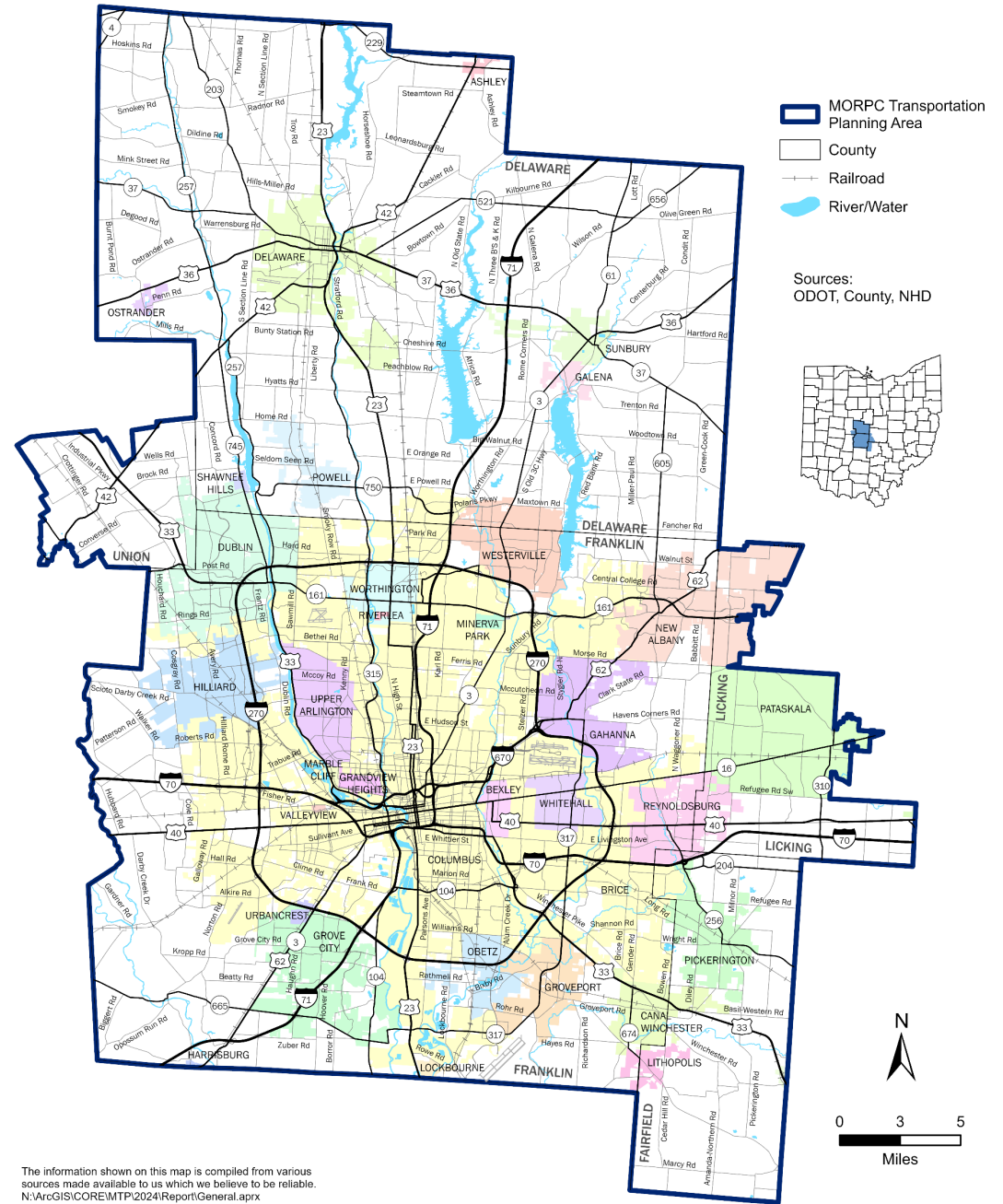
MID-OHIO REGIONAL  
**MORPC**  
PLANNING COMMISSION

# MPO BOUNDARY REGULATIONS

- At a minimum, include the current Census urbanized area and the area likely to be urbanized during the 20-year forecast period covered by the transportation plan (23 CFR 450.312).
- Revisions to MPO boundaries can be initiated via coordination through the respective ODOT District Office and ODOT Central Office and require the Governor's approval.

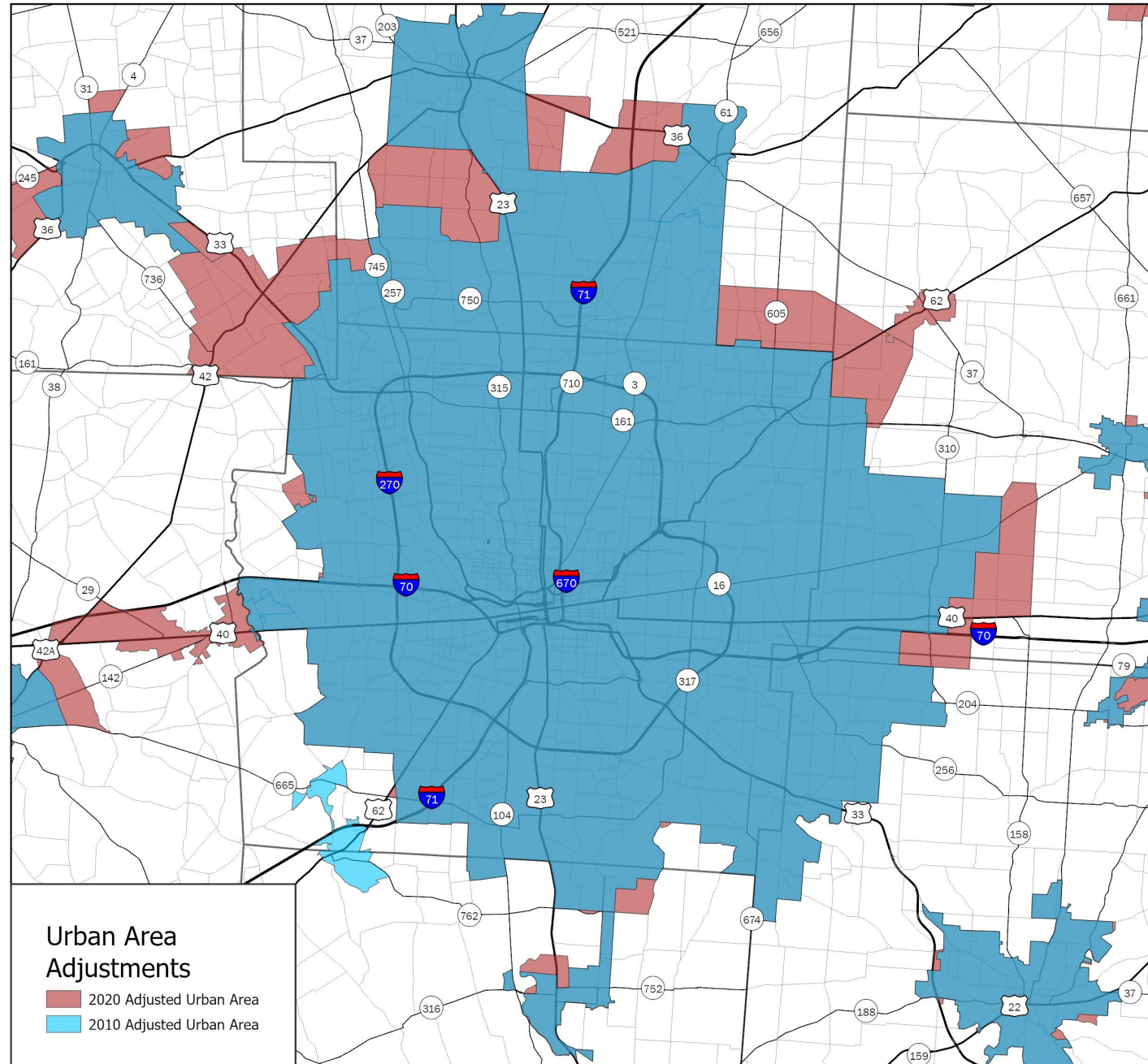


**MORPC**



# 2020 URBAN AREAS & GROWTH PROJECTIONS

- 2010-2020 growth led to expansion of Census identified Urban Area
- 2020 Boundary includes part of Plain City and is adjacent to Johnstown



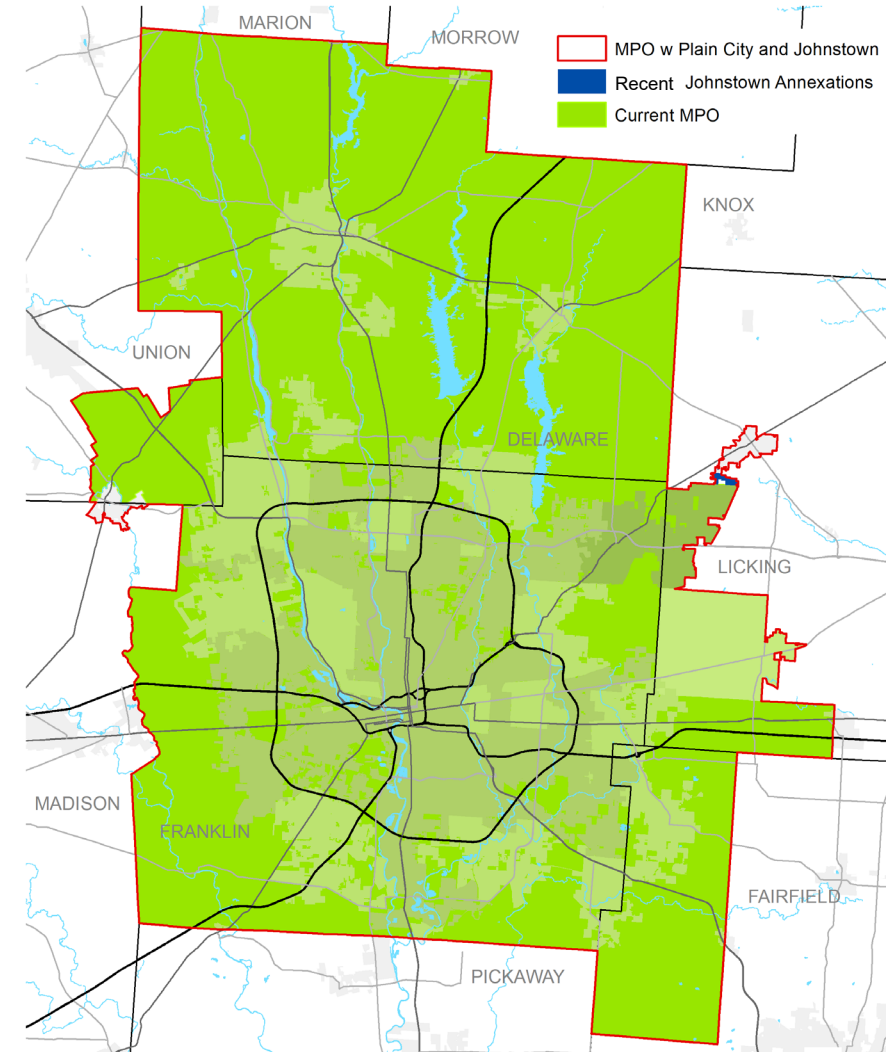
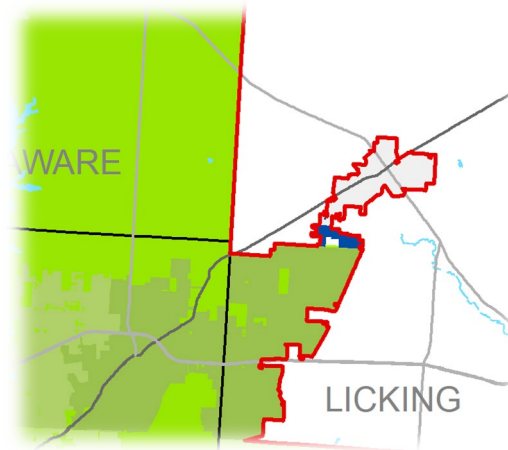
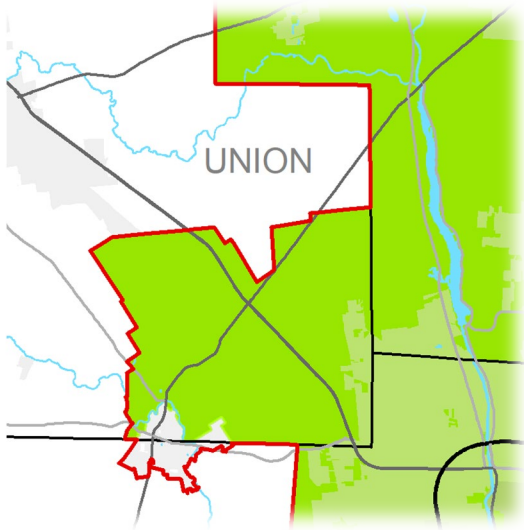
MORPC

# MPO BOUNDARY EXPANSION



MORPC

- Boundary expanding to include:
  - Village of Plain City jurisdictional boundary
  - City of Johnstown jurisdictional boundary
  - MPO Boundary grows with jurisdictional boundaries



# MPO BOUNDARY EXPANSION – NEXT STEPS



MORPC

- Resolution comes before Committees in March
- Coordination with Governor's office
- Send updated maps to ODOT and USDOT
- Incorporate into planning processes and documents going forward
  - Committee representation
  - MTP, TIP documents
  - MORPC-Attributable Funds eligible
  - Technical Assistance
  - General Coordination

# MARIA SCHAPER, AICP

*Transportation Director*

**Mid-Ohio Regional Planning Commission**

**T:** 614.233.4153

[mschaper@morpc.org](mailto:mschaper@morpc.org)

111 Liberty Street, Suite 100

Columbus, OH 43215



MID-OHIO REGIONAL  
**MORPC**  
PLANNING COMMISSION