



T-4-25 ADOPTING THE MORPC MPO BOUNDARY

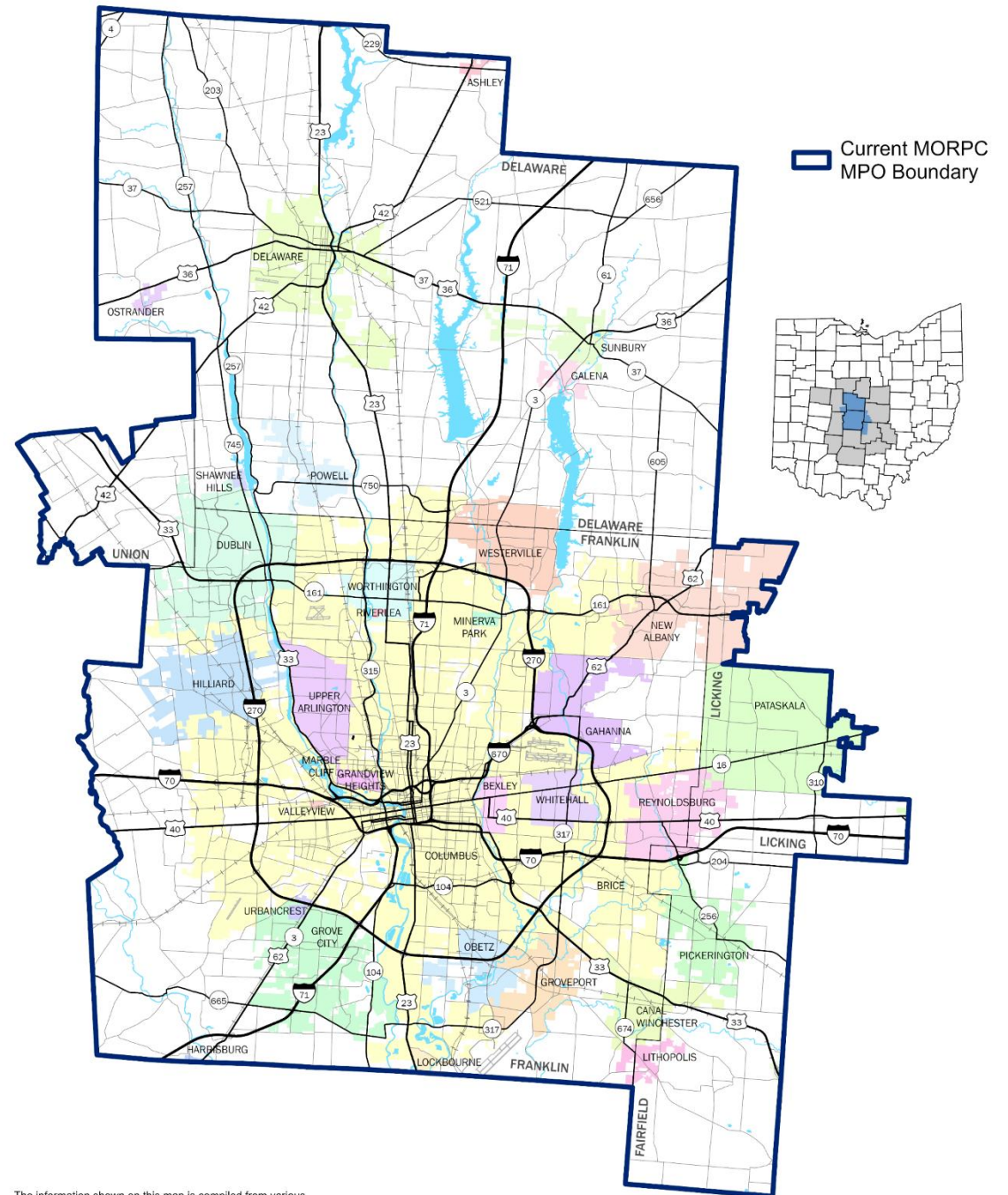
Maria Schaper, MORPC



MID-OHIO REGIONAL
MORPC
PLANNING COMMISSION

MPO BOUNDARY REGULATIONS

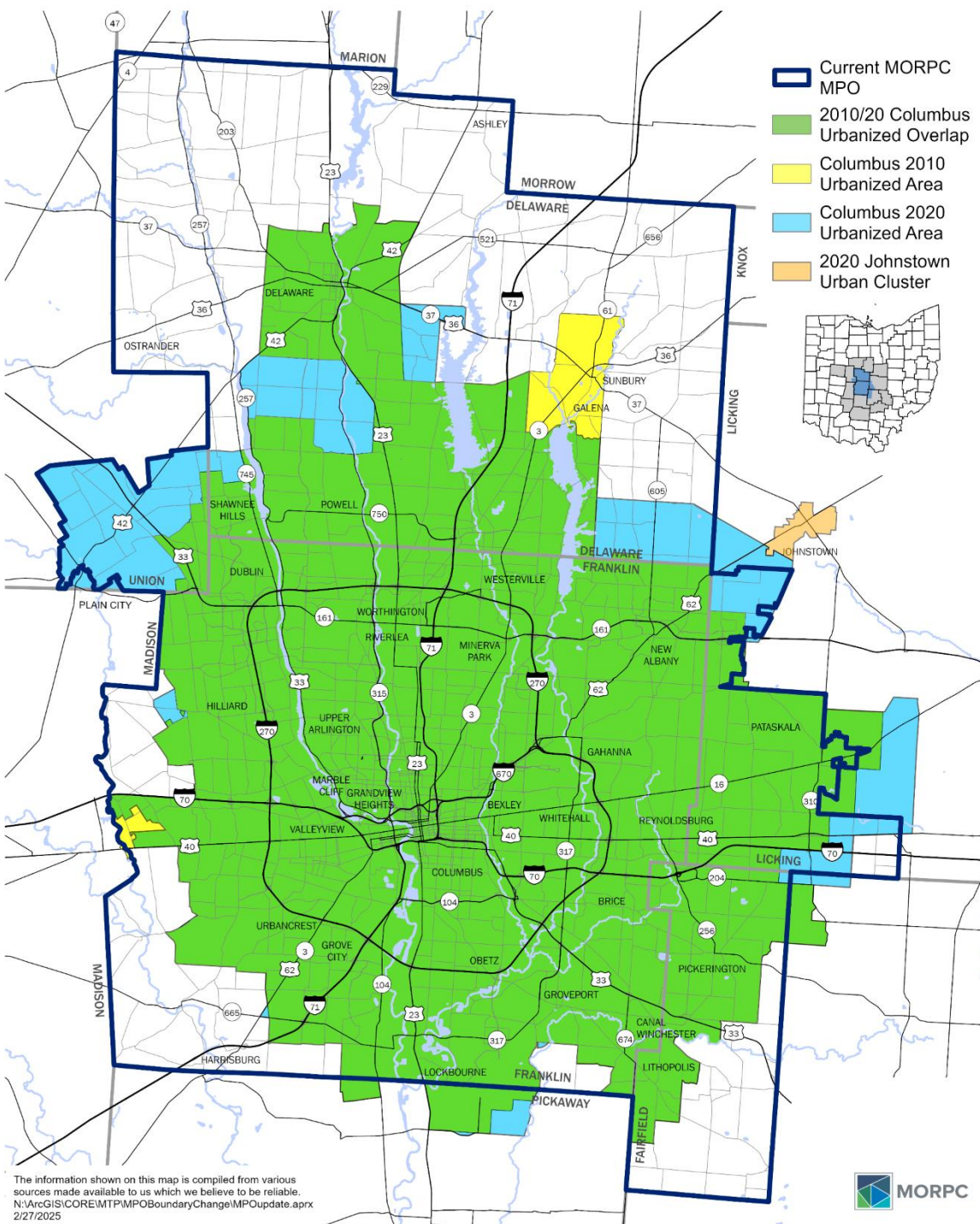
- At a minimum, include the current Census urbanized area and the area likely to be urbanized during the 20-year forecast period covered by the transportation plan (23 CFR 450.312).
- Revisions to MPO boundaries can be initiated via coordination through the respective ODOT District Office and ODOT Central Office and require the Governor's approval.



MORPC

2020 URBAN AREAS & GROWTH PROJECTIONS

- 2010-2020 growth led to expansion of Census identified Urban Area
- 2020 Boundary includes part of Plain City and is adjacent to Johnstown



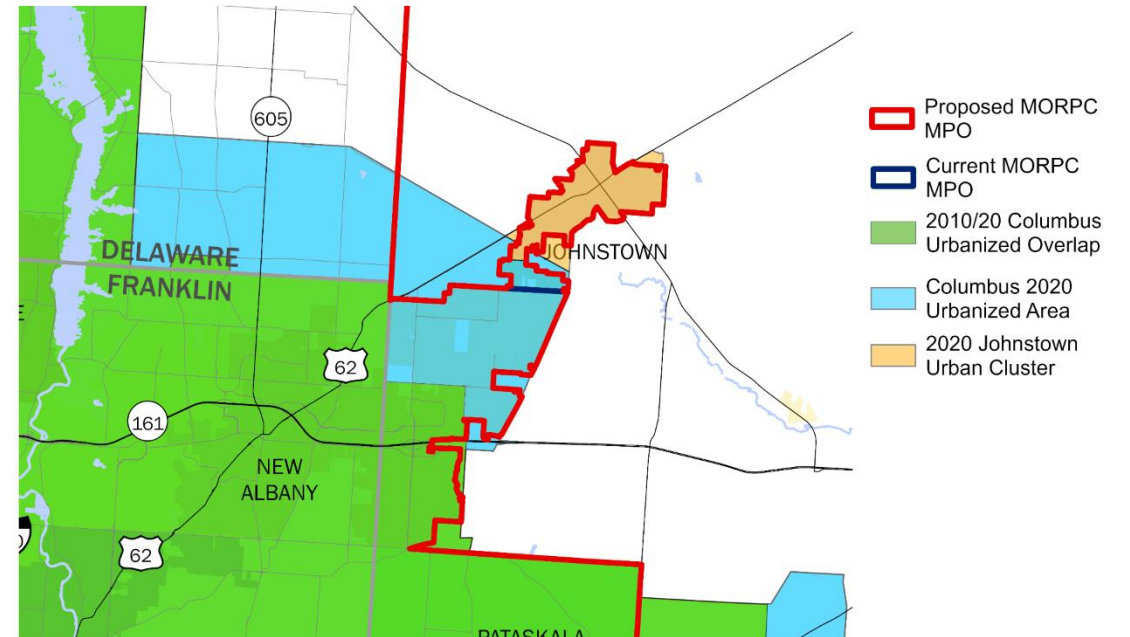
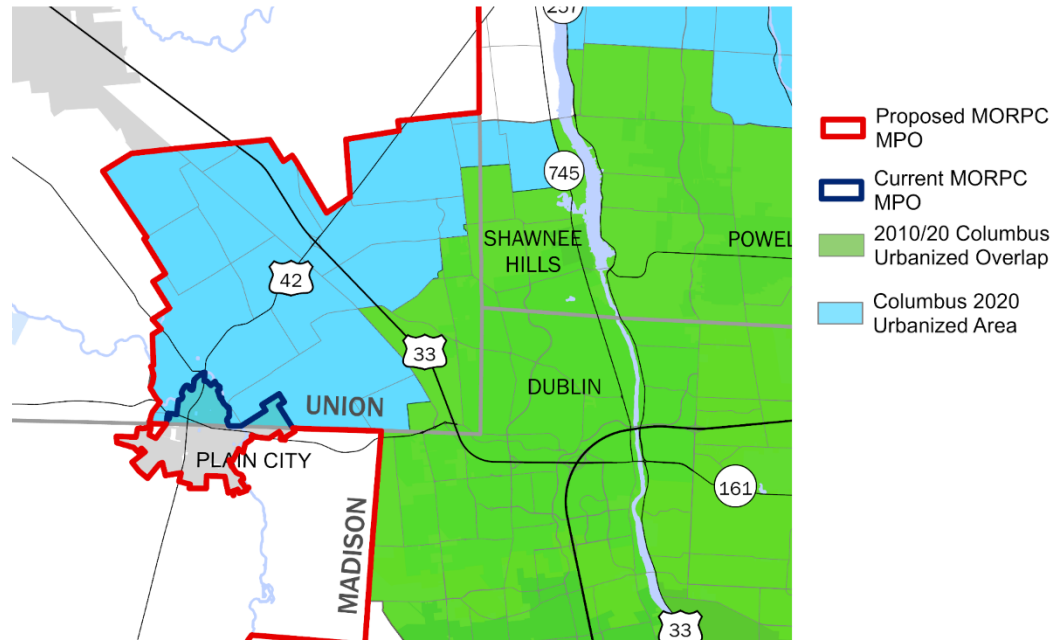
MORPC



MPO BOUNDARY EXPANSION



- Boundary expanding to include:
 - Village of Plain City jurisdictional boundary
 - City of Johnstown jurisdictional boundary
 - MPO Boundary grows with jurisdictional boundaries



MPO BOUNDARY EXPANSION – NEXT STEPS



- Coordination with Governor's office
- Send updated maps to ODOT and USDOT
- Incorporate into planning processes and documents going forward
 - Committee representation
 - MTP, TIP, PWP documents
 - MORPC-Attributable Funds eligible
 - Technical Assistance
 - General Coordination

MARIA SCHAPER, AICP

Transportation Director

Mid-Ohio Regional Planning Commission

T: 614.233.4153

mschaper@morpc.org

111 Liberty Street, Suite 100

Columbus, OH 43215



MID-OHIO REGIONAL
MORPC
PLANNING COMMISSION