



T-4-25 ADOPTING THE MORPC MPO BOUNDARY

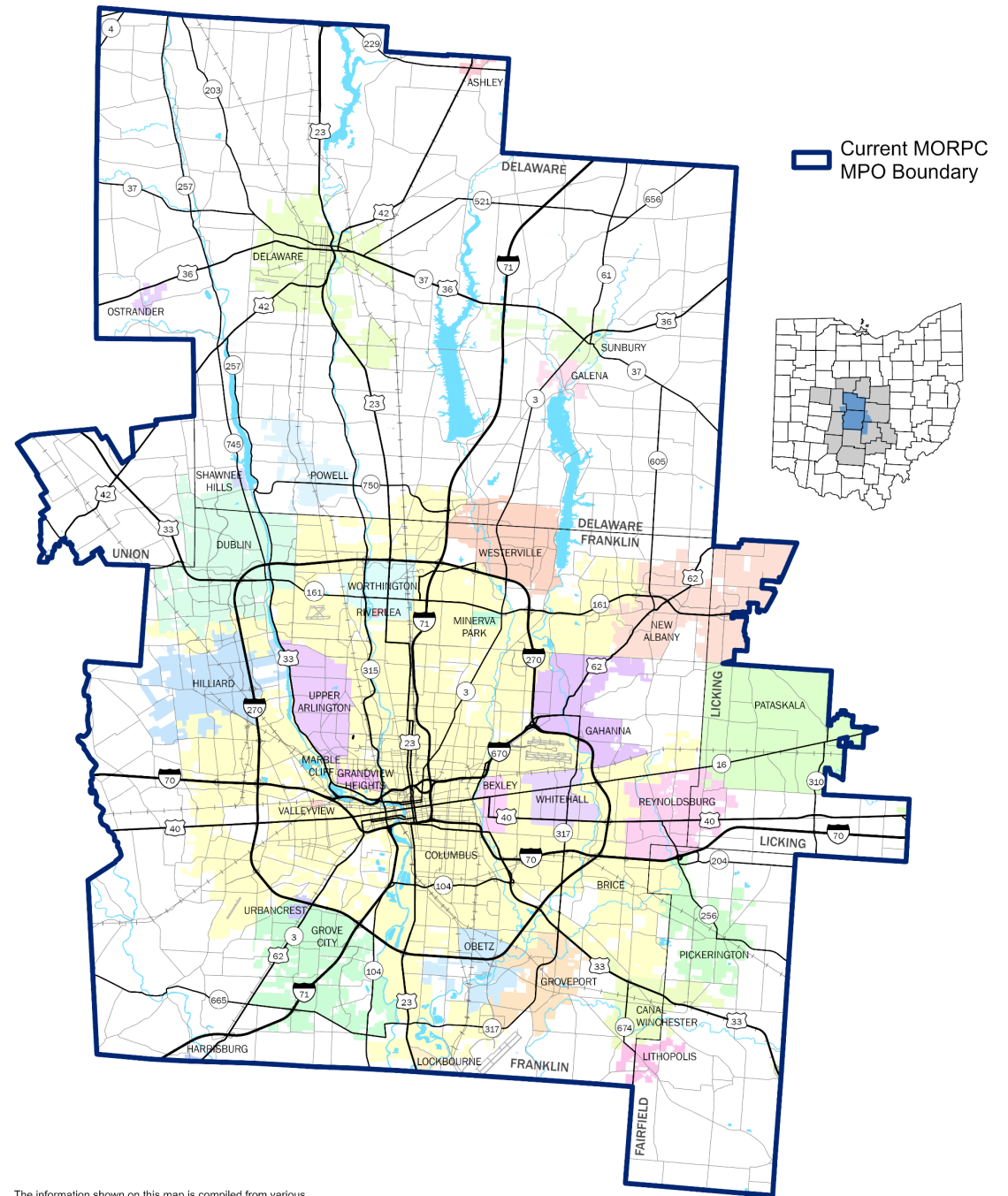
Maria Schaper, MORPC



MID-OHIO REGIONAL
MORPC
PLANNING COMMISSION

MPO BOUNDARY REGULATIONS

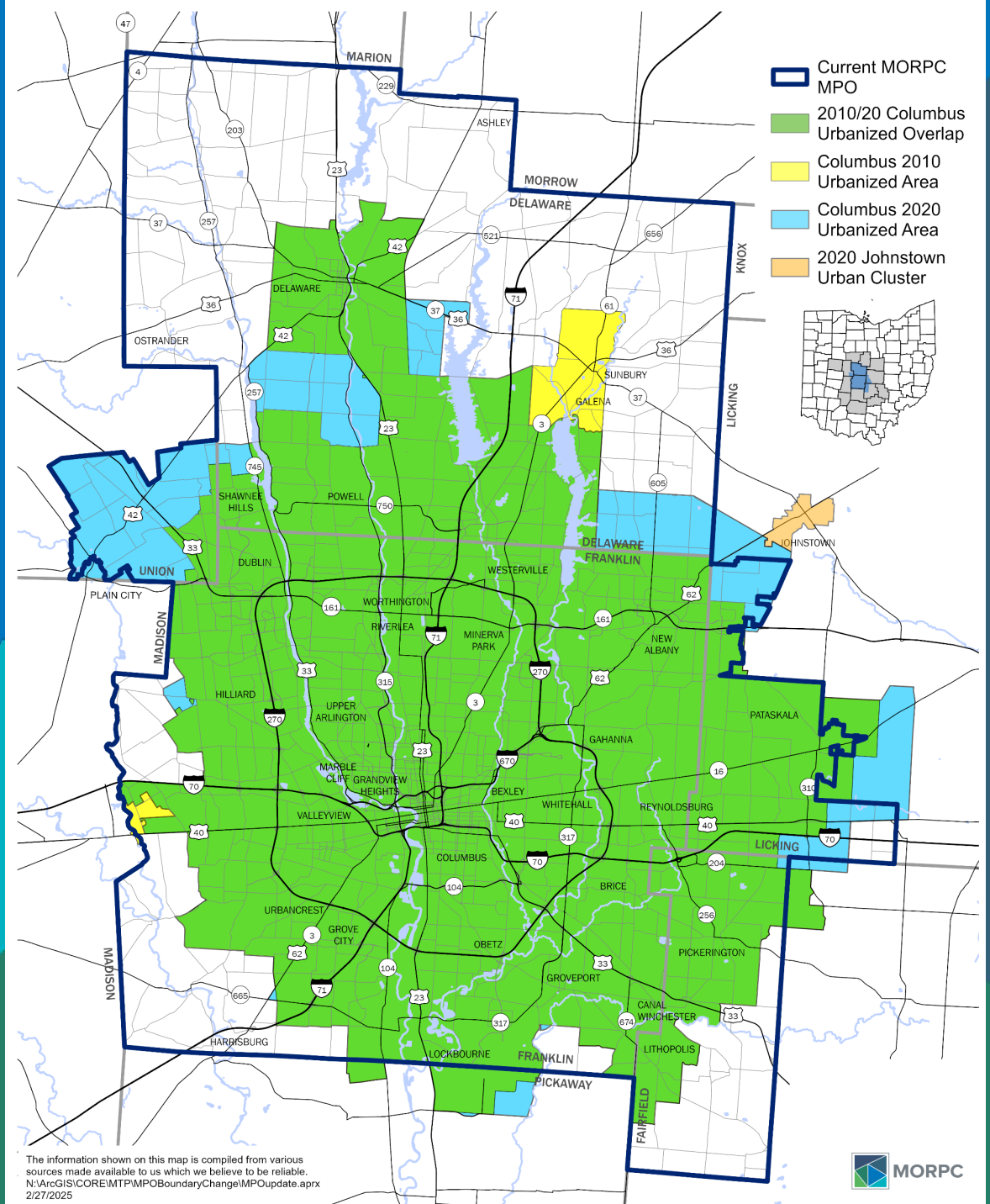
- At a minimum, include the current Census urbanized area and the area likely to be urbanized during the 20-year forecast period covered by the transportation plan (23 CFR 450.312).
- Revisions to MPO boundaries can be initiated via coordination through the respective ODOT District Office and ODOT Central Office and require the Governor's approval.



MORPC

2020 URBAN AREAS & GROWTH PROJECTIONS

- 2010-2020 growth led to expansion of Census identified Urban Area
- 2020 Boundary includes part of Plain City and is adjacent to Johnstown



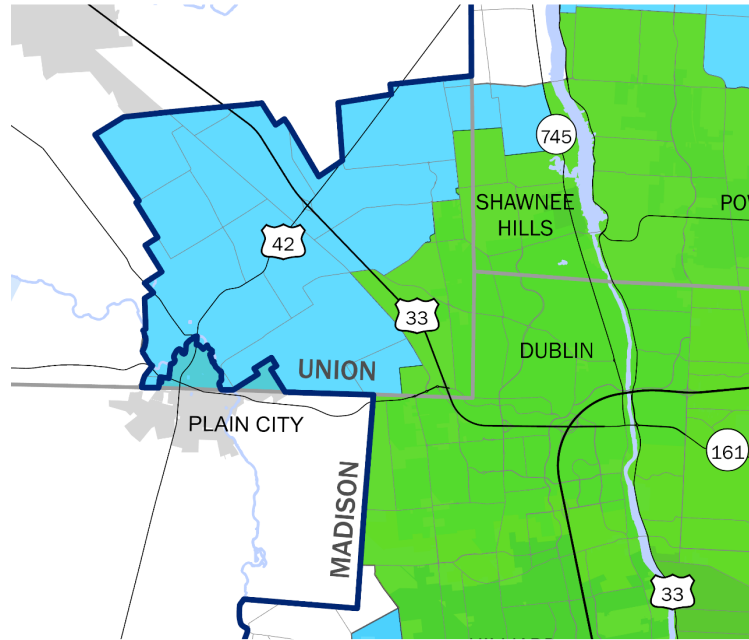
The information shown on this map is compiled from various sources made available to us which we believe to be reliable.
 N:\ArcGIS\CORE\MTP\MPOBoundaryChange\MPOupdate.aprx
 2/27/2025



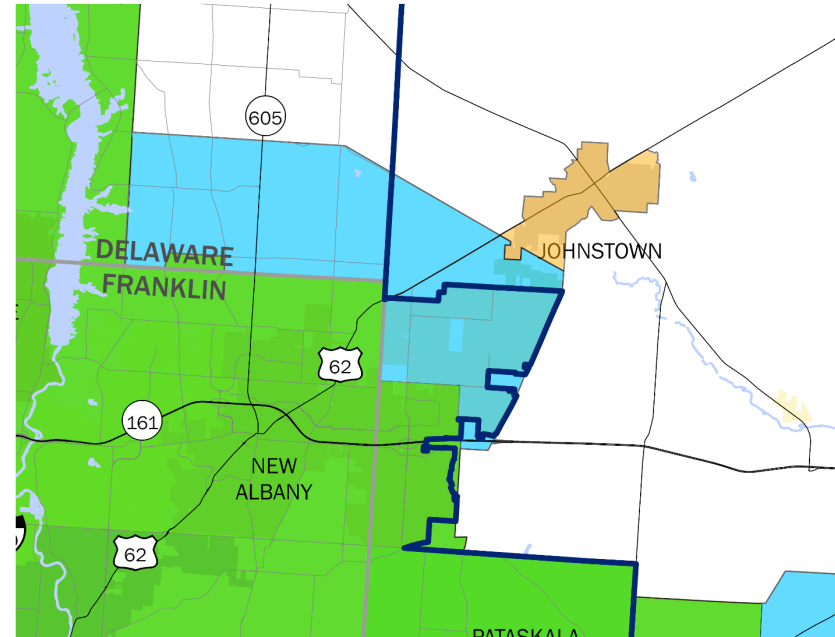
MPO BOUNDARY EXPANSION



- Boundary expanding to include:
 - Village of Plain City jurisdictional boundary
 - City of Johnstown jurisdictional boundary
 - MPO Boundary grows with jurisdictional boundaries



- Current MORPC MPO
- 2010/20 Columbus Urbanized Overlap
- Columbus 2020 Urbanized Area

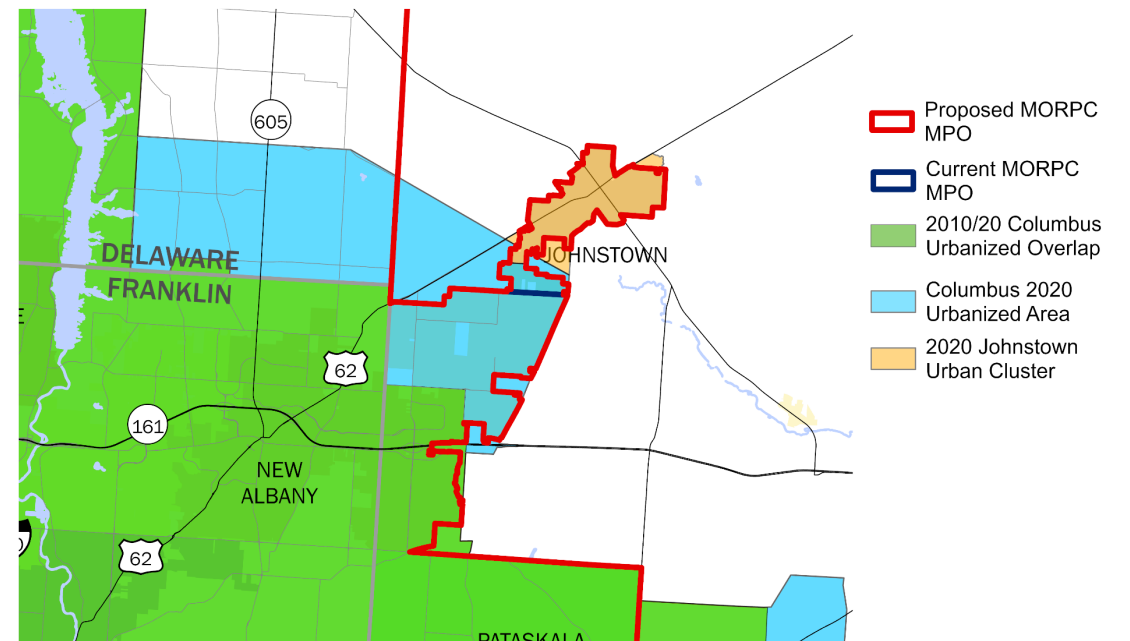
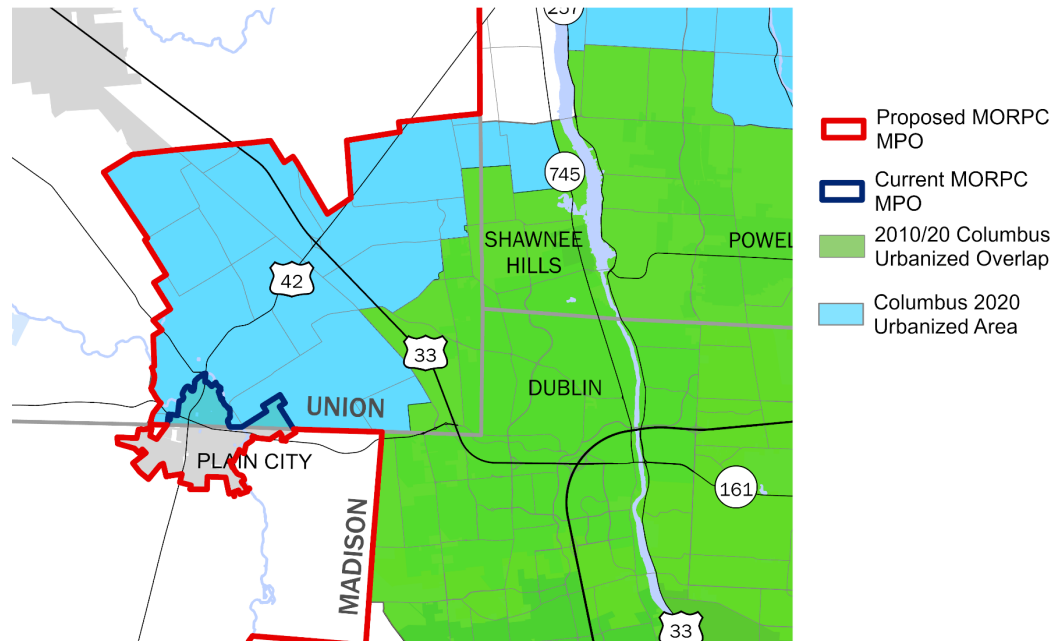


- Current MORPC MPO
- 2010/20 Columbus Urbanized Overlap
- Columbus 2020 Urbanized Area
- 2020 Johnstown Urban Cluster

MPO BOUNDARY EXPANSION



- Boundary expanding to include:
 - Village of Plain City jurisdictional boundary
 - City of Johnstown jurisdictional boundary
 - MPO Boundary grows with jurisdictional boundaries



MPO BOUNDARY EXPANSION – NEXT STEPS



MORPC

- Coordination with Governor's office
- Send updated maps to ODOT and USDOT
- Incorporate into planning processes and documents going forward
 - Committee representation
 - MTP, TIP, PWP documents
 - MORPC-Attributable Funds eligible
 - Technical Assistance
 - General Coordination

MARIA SCHAPER, AICP

Transportation Director

Mid-Ohio Regional Planning Commission

T: 614.233.4153

mschaper@morpc.org

111 Liberty Street, Suite 100

Columbus, OH 43215



MID-OHIO REGIONAL
MORPC
PLANNING COMMISSION