

The Intercity Passenger Connectivity initiative explores options to better connect the Columbus Region with major metropolitan regions of the Midwest such as Cleveland, Dayton, Cincinnati, Chicago and Pittsburgh. A multi-phased planning effort will examine the feasibility for passenger railroad and modern technologies. The project builds on the Midwest Connect Hyperloop and Chicago to Columbus Passenger Rail studies.

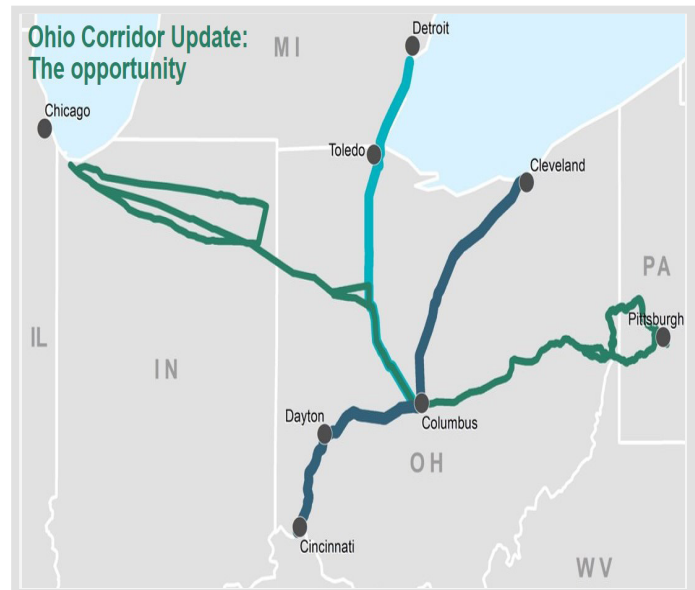
Prioritized as a project of  
**REGIONAL  
SIGNIFICANCE**

**Project Type:**  
Strategic Planning for Implementation

**Lead Agency:**  
Mid-Ohio Regional Planning Commission (MORPC)

**Project Contact:**  
John Gardocki, Transit and Mobility Manager  
jgardocki@morpc.org (614) 233-4146

**Partner Agencies:**  
Columbus Partnership, JobsOhio, Ohio Department of Transportation, Ohio Rail Development Commission, Multiple Cities & Counties, numerous public and private partners along the corridor

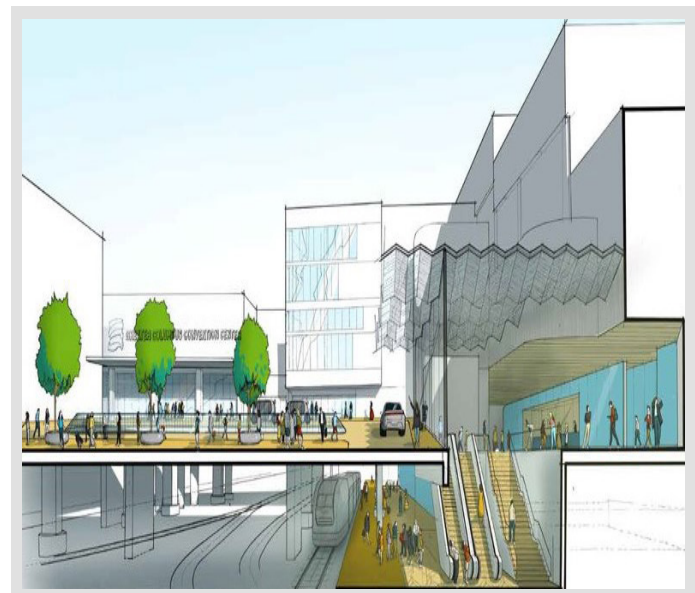


## Project Location

Three routes are being explored to better connect Central Ohio to the Midwest

## Project Benefits

- Maintains competitive infrastructure by exploring diverse transportation technologies for the region and state
- Ohio's three biggest metro areas are among the least well-served top fifty metro areas, Intercity Passenger Connectivity helps remedy this
- Creates opportunities to create a Midwest megaregion by linking major cities with intercity rail transportation
- Links major business, institutional, logistics, and sports destinations along the corridor
- Provides an opportunity to transform and improve the movement of freight and cargo



A conceptual image of what a downtown passenger rail station could look like in Columbus.

CONGRESS

HOUSE

2 - Wenstrup

3 - Beatty

4 - Jordan

12 - Balderson

15 - Carey

SENATE

Brown

Vance